

USH 51: STH 29 W TO STH 29 E (MARATHON COUNTY) OFF-PEAK DAY 2 LANE CLOSURE DIVERSION ROUTE: BUS 51 - STH 52	MAY
	Analyzed for 2009 Construction Season

SUMMARY OF TRAFFIC MODEL OUTPUT

SATURDAY SOUTHBOUND DIRECTION

TIME OF DAY	FLOWS AND CAPACITY IN VEH/HR							AVERAGE SPEEDS IN MPH							
	MAIN ROUTE		ALTERNATE ROUTE		SITE CAPA CITY	FLOW MAIN ROUTE	FLOW DIVER -TING	TOTAL DIVN FLOW	AV.DEL PER VEH (MINS)	AVERAGE QUEUE (VEH)	MAIN ROUTE		ALTERNATE ROUTE		
	DEMAND FLOW	PCT HEAVY	NORMAL FLOW	PCT HEAVY							WITHOUT WORK ZN	WITH WORK ZN	SITE	WITHOUT WORK ZN	WITH WORK ZN
MID-1 AM	268	0.0	106	0.0	OFF	268	0	106	0.00	0	70.2	70.2	70.2	30.7	30.7
1-2 AM	126	0.0	67	0.0	OFF	126	0	67	0.00	0	70.2	70.2	70.2	31.7	31.7
2-3 AM	117	0.0	51	0.0	OFF	117	0	51	0.00	0	70.2	70.2	70.2	32.2	32.2
3-4 AM	155	0.0	48	0.0	OFF	155	0	48	0.00	0	70.2	70.2	70.2	32.2	32.2
4-5 AM	158	0.0	91	0.0	OFF	158	0	91	0.00	0	70.2	70.2	70.2	31.1	31.1
5-6 AM	318	0.0	120	0.0	OFF	318	0	120	0.00	0	70.2	70.2	70.2	30.4	30.4
6-7 AM	581	0.0	204	0.0	OFF	581	0	204	0.00	0	70.0	70.0	70.0	28.1	28.1
7-8 AM	866	0.0	322	0.0	OFF	866	0	322	0.00	0	69.7	69.7	69.7	25.0	25.0
8-9 AM	1312	0.0	487	0.0	1499	1312	0	487	0.85	0	69.1	57.2	35.3	20.9	20.9
9-10 AM	1454	0.0	624	0.0	1499	1454	0	624	1.07	1	68.9	54.6	31.9	18.3	18.3
10-11 AM	1755	0.0	805	0.0	1500	1755	0	805+	5.17	123	68.6	30.4	30.8	14.8	14.8
11A-NOON	1732	0.0	868	0.0	1499	1732	0	868+	15.03	373	68.6	14.7	30.8	13.5	13.5
NOON-1PM	1821	0.0	911	0.0	1500	1794	27	938+	25.38	644	68.5	9.6	30.8	12.9	12.7
1-2 PM	1780	0.0	850	0.0	1500	1509	271	1121+	32.27	816	68.5	7.8	30.8	13.8	11.2
2-3 PM	1563	0.0	770	0.0	1500	1375	188	958+	28.60	721	68.8	8.6	30.8	15.5	12.5
3-4 PM	1725	0.0	830	0.0	1500	1588	137	967+	28.70	723	68.6	8.6	30.8	14.3	12.4
4-5 PM	1510	0.0	780	0.0	1500	1365	145	925+	27.43	690	68.9	8.9	30.8	15.3	12.9
5-6 PM	1362	0.0	706	0.0	1499	1320	42	749	21.33	532	69.1	11.1	30.8	16.7	15.9
6-7 PM	1216	0.0	618	0.0	OFF	1216	0	618	0.24	20	69.2	65.4	65.4	18.4	18.4
7-8 PM	1056	0.0	525	0.0	OFF	1056	0	525	0.00	0	69.4	69.4	69.4	20.2	20.2
8-9 PM	850	0.0	467	0.0	OFF	850	0	467	0.00	0	69.7	69.7	69.7	21.3	21.3
9-10 PM	699	0.0	346	0.0	OFF	699	0	346	0.00	0	69.9	69.9	69.9	24.3	24.3
10-11 PM	490	0.0	267	0.0	OFF	490	0	267	0.00	0	70.1	70.1	70.1	26.5	26.5
11PM-MID	296	0.0	176	0.0	OFF	296	0	176	0.00	0	70.2	70.2	70.2	28.9	28.9

"OFF" INDICATES NO ROAD WORK (ALL LANES OPEN TO TRAFFIC)

+ INDICATES DIVERSION FLOW EXCEEDS USER-SPECIFIED WARNING LIMIT

----- SITE BREAKDOWN DELAYS -----	
BREAKDOWN DURATION (MINS)	0
RANGE OF QUEUE DELAY - MIN	0.0
(VEH-H) MAX	0.0
RANGE OF DIVN DELAY - MIN	0.0
(VEH-H) MAX	0.0
AV BREAKDOWNS PER DAY	0.00
AV QUEUE DELAY/DAY (VEH-H)	0.0
AV DIVN DELAY/DAY (VEH-H)	0.0
AV TOTAL DELAY/DAY (VEH-H)	0.0

----- SITE ACCIDENT DELAYS -----	
ACCIDENT DURATION (MINS)	0
RANGE OF QUEUE DELAY - MIN	0.0
(VEH-H) MAX	0.0
RANGE OF DIVN DELAY - MIN	0.0
(VEH-H) MAX	0.0
AV ACCIDENTS PER DAY	0.00
AV QUEUE DELAY/DAY (VEH-H)	0.0
AV DIVN DELAY/DAY (VEH-H)	0.0
AV TOTAL DELAY/DAY (VEH-H)	0.0

AVERAGE ACCIDENT NUMBERS (PIA/DAY)	
MAIN ROUTE WITHOUT WORKS	0.0174
MAIN ROUTE WITH WORKS	0.0157
DIVERSION	0.1126

PIA: Personal Injury Accidents

IMPACTS ON ROAD USERS	
ROAD USER COSTS PER DAY (DOLLARS)	\$91,713
CONGESTED HOURS PER DAY*	7

*Delays Exceeding 15 Minutes

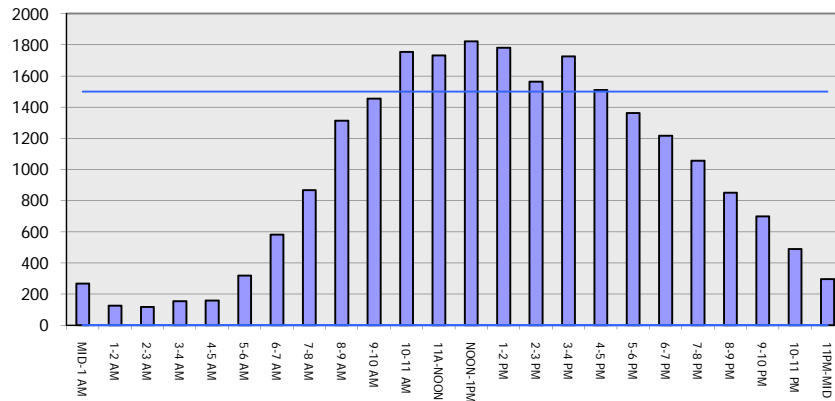
**USH 51: STH 29 W TO STH 29 E (MARATHON COUNTY)
 OFF-PEAK DAY 2 LANE CLOSURE
 DIVERSION ROUTE: BUS 51 - STH 52**

MAY
 Analyzed for 2009
 Construction Season

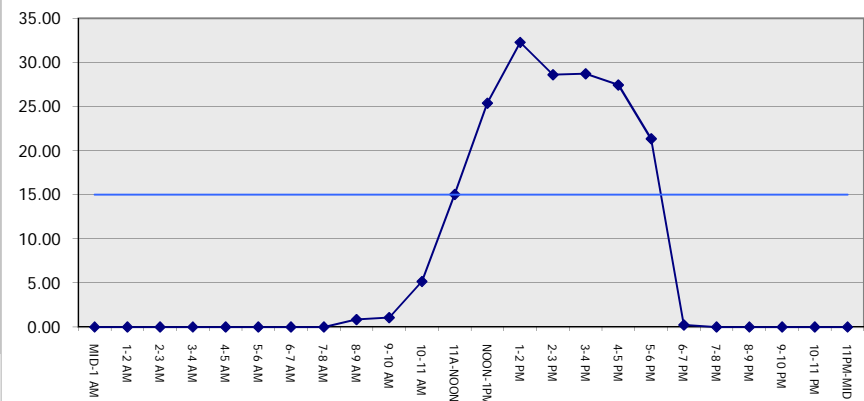
GRAPHICAL REPRESENTATION OF TRAFFIC MODEL INPUT AND OUTPUT

SATURDAY SOUTHBOUND DIRECTION

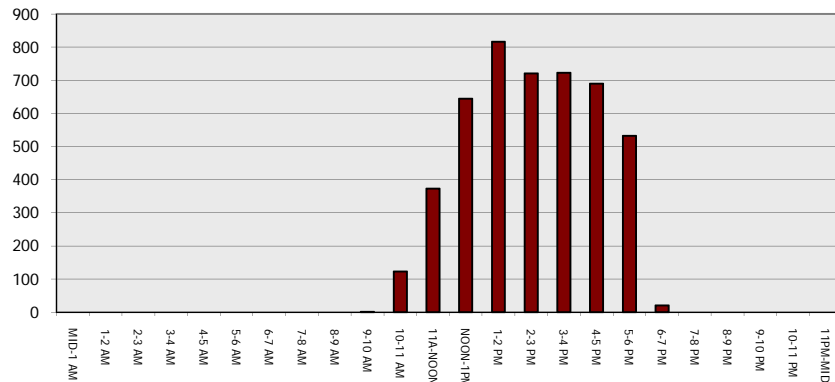
Main Route - Traffic Demand (Vehicles Per Hour)



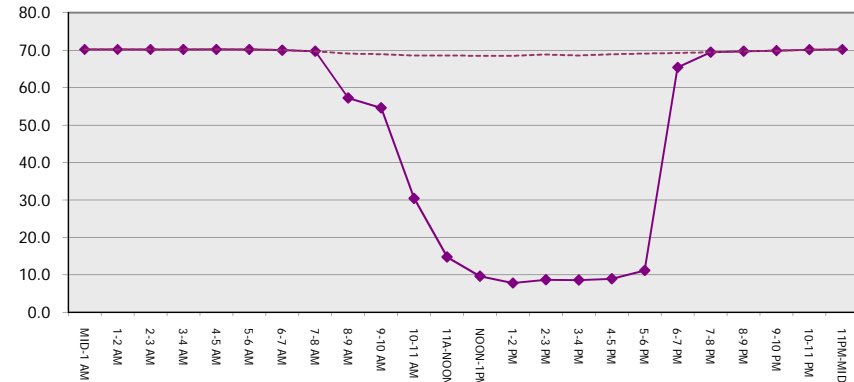
Main Route Average Delay Per Vehicle (Minutes)



Main Route - Average Queue Length (Vehicles)



Main Route - Average Speed (MPH)



USH 51: STH 29 W TO STH 29 E (MARATHON COUNTY) OFF-PEAK DAY 2 LANE CLOSURE DIVERSION ROUTE: BUS 51 - STH 52	MAY
	Analyzed for 2009 Construction Season

SUMMARY OF TRAFFIC MODEL OUTPUT

SATURDAY NORTHBOUND DIRECTION

TIME OF DAY	FLOWS AND CAPACITY IN VEH/HR								AVERAGE SPEEDS IN MPH						
	MAIN		DIVERSION		SITE CAPA CITY	FLOW MAIN ROUTE	FLOW DIVER -TING	TOTAL DIVN FLOW	AV.DEL PER VEH (MINS)	AVERAGE QUEUE (VEH)	MAIN ROUTE		ALTERNATE ROUTE		
	DEMAND FLOW	PCT HEAVY	NORMAL FLOW	PCT HEAVY							WITHOUT WORK ZN	WITH WORK ZN	SITE	WITHOUT WORK ZN	WITH WORK ZN
MID-1 AM	470	0.0	105	0.0	OFF	470	0	105	0.00	0	70.2	70.2	70.2	30.7	30.7
1-2 AM	254	0.0	77	0.0	OFF	254	0	77	0.00	0	70.2	70.2	70.2	31.5	31.5
2-3 AM	207	0.0	72	0.0	OFF	207	0	72	0.00	0	70.2	70.2	70.2	31.6	31.6
3-4 AM	184	0.0	62	0.0	OFF	184	0	62	0.00	0	70.2	70.2	70.2	31.9	31.9
4-5 AM	164	0.0	89	0.0	OFF	164	0	89	0.00	0	70.2	70.2	70.2	31.2	31.2
5-6 AM	344	0.0	178	0.0	OFF	344	0	178	0.00	0	70.2	70.2	70.2	28.8	28.8
6-7 AM	635	0.0	309	0.0	OFF	635	0	309	0.00	0	69.9	69.9	69.9	25.3	25.3
7-8 AM	1055	0.0	478	0.0	OFF	1055	0	478	0.00	0	69.4	69.4	69.4	21.1	21.1
8-9 AM	1480	0.0	666	0.0	1499	1480	0	666	1.38	10	68.9	51.5	32.2	17.5	17.5
9-10 AM	1901	0.0	825	0.0	1500	1901	0	825+	8.32	221	68.4	22.7	30.8	14.4	14.4
10-11 AM	2204	0.0	946	0.0	1500	1917	287	1233+	27.68	715	68.0	8.9	30.8	12.7	11.9
11A-NOON	2153	0.0	953	0.0	1499	1500	653	1606+	32.33	818	68.1	7.7	30.8	12.6	11.2
NOON-1PM	2006	0.0	909	0.0	1499	1500	507	1416+	32.34	818	68.2	7.7	30.8	12.9	11.2
1-2 PM	1863	0.0	870	0.0	1499	1485	379	1248+	32.20	815	68.4	7.8	30.8	13.5	11.2
2-3 PM	1798	0.0	854	0.0	1499	1482	317	1171+	32.18	814	68.5	7.8	30.8	13.8	11.2
3-4 PM	1789	0.0	780	0.0	1499	1469	320	1101+	32.06	811	68.5	7.8	30.8	15.3	11.2
4-5 PM	1609	0.0	713	0.0	1499	1357	252	965+	28.80	727	68.7	8.6	30.8	16.6	12.4
5-6 PM	1455	0.0	632	0.0	1499	1314	140	772	22.34	559	68.9	10.7	30.8	18.1	15.4
6-7 PM	1304	0.0	562	0.0	OFF	1304	0	562	0.27	23	69.1	64.8	64.8	19.5	19.5
7-8 PM	1059	0.0	453	0.0	OFF	1059	0	453	0.00	0	69.4	69.4	69.4	21.6	21.6
8-9 PM	864	0.0	368	0.0	OFF	864	0	368	0.00	0	69.7	69.7	69.7	23.8	23.8
9-10 PM	798	0.0	290	0.0	OFF	798	0	290	0.00	0	69.7	69.7	69.7	25.8	25.8
10-11 PM	561	0.0	230	0.0	OFF	561	0	230	0.00	0	70.0	70.0	70.0	27.4	27.4
11PM-MID	436	0.0	163	0.0	OFF	436	0	163	0.00	0	70.2	70.2	70.2	29.2	29.2

"OFF" INDICATES NO ROAD WORK (ALL LANES OPEN TO TRAFFIC)

+ INDICATES DIVERSION FLOW EXCEEDS USER-SPECIFIED WARNING LIMIT

----- SITE BREAKDOWN DELAYS -----	
BREAKDOWN DURATION (MINS)	0
RANGE OF QUEUE DELAY - MIN	0.0
(VEH-H) MAX	0.0
RANGE OF DIVN DELAY - MIN	0.0
(VEH-H) MAX	0.0
AV BREAKDOWNS PER DAY	0.00
AV QUEUE DELAY/DAY (VEH-H)	0.0
AV DIVN DELAY/DAY (VEH-H)	0.0
AV TOTAL DELAY/DAY (VEH-H)	0.0

----- SITE ACCIDENT DELAYS -----	
ACCIDENT DURATION (MINS)	0
RANGE OF QUEUE DELAY - MIN	0.0
(VEH-H) MAX	0.0
RANGE OF DIVN DELAY - MIN	0.0
(VEH-H) MAX	0.0
AV ACCIDENTS PER DAY	0.00
AV QUEUE DELAY/DAY (VEH-H)	0.0
AV DIVN DELAY/DAY (VEH-H)	0.0
AV TOTAL DELAY/DAY (VEH-H)	0.0

AVERAGE ACCIDENT NUMBERS (PIA/DAY)	
MAIN ROUTE WITHOUT WORKS	0.0199
MAIN ROUTE WITH WORKS	0.0167
DIVERSION	0.1372

PIA: Personal Injury Accidents

IMPACTS ON ROAD USERS	
ROAD USER COSTS PER DAY (DOLLARS)	\$140,006
CONGESTED HOURS PER DAY*	8

*Delays Exceeding 15 Minutes

**USH 51: STH 29 W TO STH 29 E (MARATHON COUNTY)
 OFF-PEAK DAY 2 LANE CLOSURE
 DIVERSION ROUTE: BUS 51 - STH 52**

MAY
 Analyzed for 2009
 Construction Season

GRAPHICAL REPRESENTATION OF TRAFFIC MODEL INPUT AND OUTPUT
SATURDAY NORTHBOUND DIRECTION

