

IH 39: STH 29E TO STH 34/CTH C (MARATHON COUNTY) OFF-PEAK DAY CLOSURE DIVERSION ROUTE: BUS 51 - STH 29	MAY
	Analyzed for 2009 Construction Season

SUMMARY OF TRAFFIC MODEL OUTPUT

FRIDAY SOUTHBOUND DIRECTION

TIME OF DAY	FLOWS AND CAPACITY IN VEH/HR						AVERAGE SPEEDS IN MPH								
	MAIN ROUTE		ALTERNATE ROUTE		SITE CAPA CITY	FLOW MAIN ROUTE	FLOW DIVER -TING	TOTAL DIVN FLOW	AV.DEL PER VEH (MINS)	AVERAGE QUEUE (VEH)	MAIN ROUTE		ALTERNATE ROUTE		
	DEMAND FLOW	PCT HEAVY	NORMAL FLOW	PCT HEAVY							WITHOUT WORK ZN	WITH WORK ZN	SITE	WITHOUT WORK ZN	WITH WORK ZN
MID-1 AM	111	0.0	57	0.0	OFF	111	0	57	0.00	0	66.2	66.2	66.2	28.5	28.5
1-2 AM	65	0.0	33	0.0	OFF	65	0	33	0.00	0	66.3	66.3	66.3	29.1	29.1
2-3 AM	63	0.0	32	0.0	OFF	63	0	32	0.00	0	66.3	66.3	66.3	29.1	29.1
3-4 AM	102	0.0	51	0.0	OFF	102	0	51	0.00	0	66.2	66.2	66.2	28.6	28.6
4-5 AM	202	0.0	103	0.0	OFF	202	0	103	0.00	0	66.0	66.0	66.0	27.4	27.4
5-6 AM	445	0.0	228	0.0	OFF	445	0	228	0.00	0	65.6	65.6	65.6	24.5	24.5
6-7 AM	1000	0.0	511	0.0	OFF	1000	0	511	0.00	0	64.5	64.5	64.5	18.3	18.3
7-8 AM	1038	0.0	530	0.0	OFF	1038	0	530	0.00	0	64.5	64.5	64.5	17.9	17.9
8-9 AM	856	0.0	438	0.0	OFF	856	0	438	0.00	0	64.8	64.8	64.8	19.6	19.6
9-10 AM	877	0.0	448	0.0	1500	877	0	448	0.51	0	64.8	52.7	42.1	19.4	19.4
10-11 AM	1003	0.0	513	0.0	1500	1003	0	513	0.52	0	64.5	52.4	41.7	18.3	18.3
11A-NOON	1066	0.0	545	0.0	1500	1066	0	545	0.53	0	64.4	52.2	41.4	17.7	17.7
NOON-1PM	1127	0.0	575	0.0	1500	1127	0	575	0.54	0	64.3	51.7	40.9	17.1	17.1
1-2 PM	1173	0.0	599	0.0	1500	1173	0	599	0.60	0	64.2	50.6	39.3	16.7	16.7
2-3 PM	1337	0.0	683	0.0	1499	1337	0	683	0.81	0	63.9	46.9	34.6	15.2	15.2
3-4 PM	1538	0.0	784	0.0	1499	1538	0	784+	1.35	9	63.5	39.7	30.8	13.4	13.4
4-5 PM	1624	0.0	830	0.0	OFF	1624	0	830+	0.01	0	63.3	63.2	63.2	12.7	12.7
5-6 PM	1504	0.0	768	0.0	OFF	1504	0	768+	0.00	0	63.6	63.6	63.6	13.6	13.6
6-7 PM	1083	0.0	553	0.0	OFF	1083	0	553	0.00	0	64.4	64.4	64.4	17.5	17.5
7-8 PM	863	0.0	441	0.0	OFF	863	0	441	0.00	0	64.8	64.8	64.8	19.6	19.6
8-9 PM	725	0.0	370	0.0	OFF	725	0	370	0.00	0	65.0	65.0	65.0	21.2	21.2
9-10 PM	503	0.0	256	0.0	OFF	503	0	256	0.00	0	65.5	65.5	65.5	23.8	23.8
10-11 PM	371	0.0	189	0.0	OFF	371	0	189	0.00	0	65.7	65.7	65.7	25.4	25.4
11PM-MID	221	0.0	113	0.0	OFF	221	0	113	0.00	0	66.0	66.0	66.0	27.1	27.1

"OFF" INDICATES NO ROAD WORK (ALL LANES OPEN TO TRAFFIC)

+ INDICATES DIVERSION FLOW EXCEEDS USER-SPECIFIED WARNING LIMIT

----- SITE BREAKDOWN DELAYS -----	
BREAKDOWN DURATION (MINS)	0
RANGE OF QUEUE DELAY - MIN	0.0
(VEH-H) MAX	0.0
RANGE OF DIVN DELAY - MIN	0.0
(VEH-H) MAX	0.0
AV BREAKDOWNS PER DAY	0.00
AV QUEUE DELAY/DAY (VEH-H)	0.0
AV DIVN DELAY/DAY (VEH-H)	0.0
AV TOTAL DELAY/DAY (VEH-H)	0.0

----- SITE ACCIDENT DELAYS -----	
ACCIDENT DURATION (MINS)	0
RANGE OF QUEUE DELAY - MIN	0.0
(VEH-H) MAX	0.0
RANGE OF DIVN DELAY - MIN	0.0
(VEH-H) MAX	0.0
AV ACCIDENTS PER DAY	0.00
AV QUEUE DELAY/DAY (VEH-H)	0.0
AV DIVN DELAY/DAY (VEH-H)	0.0
AV TOTAL DELAY/DAY (VEH-H)	0.0

AVERAGE ACCIDENT NUMBERS (PIA/DAY)	
MAIN ROUTE WITHOUT WORKS	0.0072
MAIN ROUTE WITH WORKS	0.0067
DIVERSION	0.0556

PIA: Personal Injury Accidents

IMPACTS ON ROAD USERS	
ROAD USER COSTS PER DAY (DOLLARS)	\$1,142
CONGESTED HOURS PER DAY*	0

*Delays Exceeding 15 Minutes

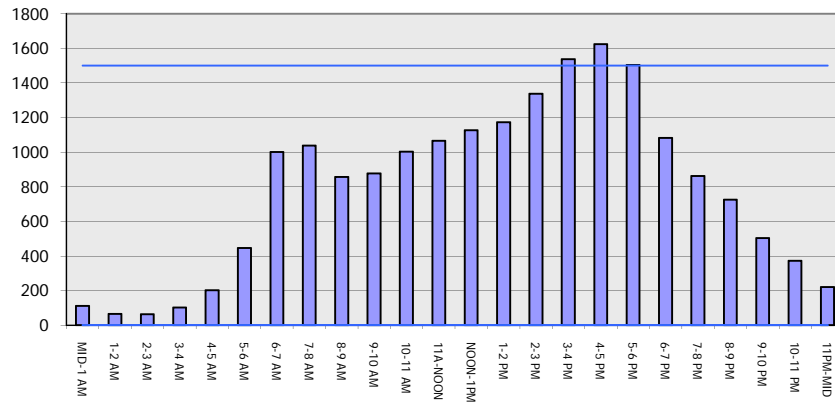
IH 39: STH 29E TO STH 34/CTH C (MARATHON COUNTY)
OFF-PEAK DAY CLOSURE
DIVERSION ROUTE: BUS 51 - STH 29

MAY
 Analyzed for 2009
 Construction Season

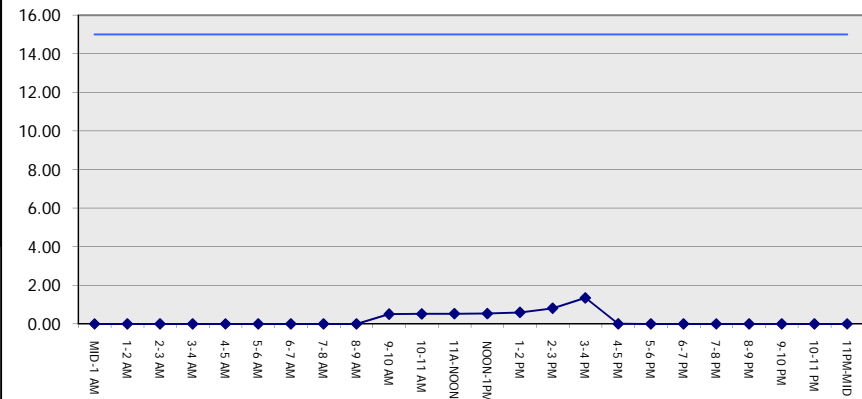
GRAPHICAL REPRESENTATION OF TRAFFIC MODEL INPUT AND OUTPUT

FRIDAY SOUTHBOUND DIRECTION

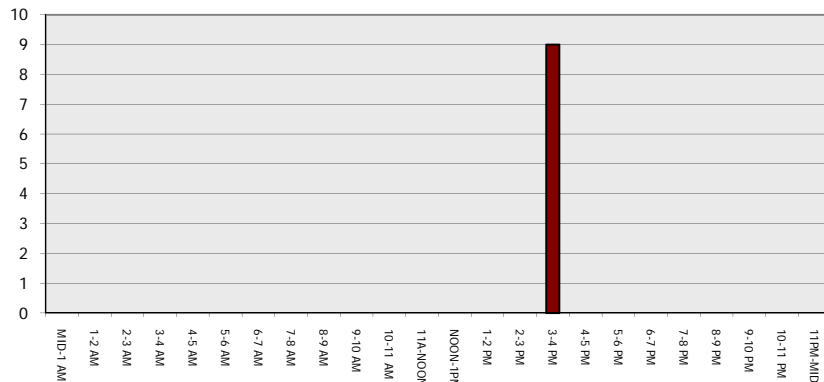
Main Route - Traffic Demand (Vehicles Per Hour)



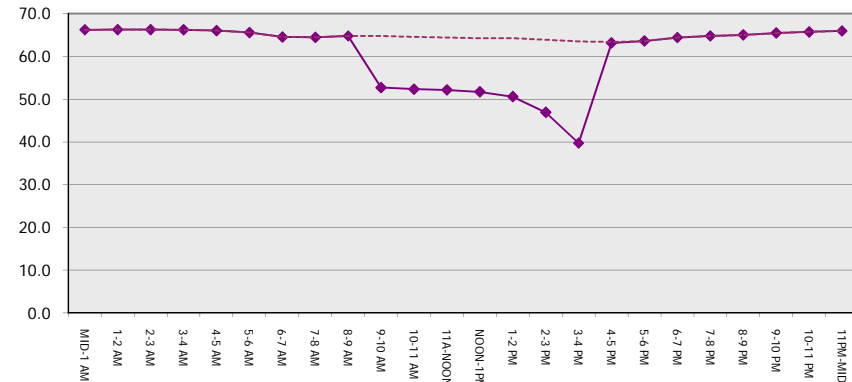
Main Route Average Delay Per Vehicle (Minutes)



Main Route - Average Queue Length (Vehicles)



Main Route - Average Speed (MPH)



IH 39: STH 29E TO STH 34/CTH C (MARATHON COUNTY) OFF-PEAK DAY CLOSURE DIVERSION ROUTE: BUS 51 - STH 29	MAY
	Analyzed for 2009 Construction Season

SUMMARY OF TRAFFIC MODEL OUTPUT	
FRIDAY	NORTHBOUND DIRECTION

TIME OF DAY	FLOWS AND CAPACITY IN VEH/HR							TOTAL			AVERAGE SPEEDS IN MPH				
	MAIN		DIVERSION		SITE CAPA CITY	FLOW MAIN ROUTE	FLOW DIVER -TING	DIVN FLOW	AV.DEL PER VEH (MINS)	AVERAGE QUEUE (VEH)	MAIN ROUTE		SITE	ALTERNATE ROUTE	
	DEMAND FLOW	PCT HEAVY	NORMAL FLOW	PCT HEAVY							WITHOUT WORK ZN	WITH WORK ZN		WITHOUT WORK ZN	WITH WORK ZN
MID-1 AM	202	0.0	103	0.0	OFF	202	0	103	0.00	0	66.0	66.0	66.0	27.4	27.4
1-2 AM	115	0.0	59	0.0	OFF	115	0	59	0.00	0	66.2	66.2	66.2	28.4	28.4
2-3 AM	96	0.0	48	0.0	OFF	96	0	48	0.00	0	66.2	66.2	66.2	28.7	28.7
3-4 AM	121	0.0	62	0.0	OFF	121	0	62	0.00	0	66.1	66.1	66.1	28.4	28.4
4-5 AM	160	0.0	81	0.0	OFF	160	0	81	0.00	0	66.1	66.1	66.1	27.9	27.9
5-6 AM	460	0.0	235	0.0	OFF	460	0	235	0.00	0	65.5	65.5	65.5	24.3	24.3
6-7 AM	1062	0.0	543	0.0	OFF	1062	0	543	0.00	0	64.4	64.4	64.4	17.7	17.7
7-8 AM	1365	0.0	697	0.0	OFF	1365	0	697	0.00	0	63.8	63.8	63.8	14.9	14.9
8-9 AM	1108	0.0	566	0.0	OFF	1108	0	566	0.00	0	64.3	64.3	64.3	17.3	17.3
9-10 AM	1229	0.0	628	0.0	1500	1229	0	628	0.67	0	64.1	49.3	37.6	16.1	16.1
10-11 AM	1329	0.0	678	0.0	1500	1329	0	678	0.80	0	63.9	47.1	34.7	15.2	15.2
11A-NOON	1401	0.0	715	0.0	1499	1401	0	715	0.90	0	63.8	45.6	33.0	14.6	14.6
NOON-1PM	1470	0.0	750	0.0	1499	1470	0	750	0.99	0	63.7	44.2	31.4	13.9	13.9
1-2 PM	1659	0.0	847	0.0	1500	1659	0	847+	3.28	71	63.3	25.9	30.8	12.5	12.5
2-3 PM	1761	0.0	899	0.0	1500	1761	0	899+	10.89	276	63.1	11.6	30.8	11.7	12.0
3-4 PM	2093	0.0	1069	0.0	1500	1762	332	1400+	23.78	619	62.5	8.0	30.8	10.6	12.5
4-5 PM	2055	0.0	1049	0.0	OFF	2055	0	1049+	1.96	119	62.5	33.8	33.8	10.6	10.6
5-6 PM	2052	0.0	1048	0.0	OFF	2052	0	1048+	0.00	0	62.5	62.5	62.5	10.6	10.6
6-7 PM	1803	0.0	920	0.0	OFF	1803	0	920+	0.00	0	63.0	63.0	63.0	11.4	11.4
7-8 PM	1616	0.0	825	0.0	OFF	1616	0	825+	0.00	0	63.4	63.4	63.4	12.8	12.8
8-9 PM	1438	0.0	734	0.0	OFF	1438	0	734	0.00	0	63.7	63.7	63.7	14.2	14.2
9-10 PM	1215	0.0	621	0.0	OFF	1215	0	621	0.00	0	64.1	64.1	64.1	16.3	16.3
10-11 PM	867	0.0	443	0.0	OFF	867	0	443	0.00	0	64.8	64.8	64.8	19.6	19.6
11PM-MID	486	0.0	248	0.0	OFF	486	0	248	0.00	0	65.5	65.5	65.5	24.0	24.0

"OFF" INDICATES NO ROAD WORK (ALL LANES OPEN TO TRAFFIC)

+ INDICATES DIVERSION FLOW EXCEEDS USER-SPECIFIED WARNING LIMIT

----- SITE BREAKDOWN DELAYS -----	
BREAKDOWN DURATION (MINS)	0
RANGE OF QUEUE DELAY - MIN	0.0
(VEH-H) MAX	0.0
RANGE OF DIVN DELAY - MIN	0.0
(VEH-H) MAX	0.0
AV BREAKDOWNS PER DAY	0.00
AV QUEUE DELAY/DAY (VEH-H)	0.0
AV DIVN DELAY/DAY (VEH-H)	0.0
AV TOTAL DELAY/DAY (VEH-H)	0.0

----- SITE ACCIDENT DELAYS -----	
ACCIDENT DURATION (MINS)	0
RANGE OF QUEUE DELAY - MIN	0.0
(VEH-H) MAX	0.0
RANGE OF DIVN DELAY - MIN	0.0
(VEH-H) MAX	0.0
AV ACCIDENTS PER DAY	0.00
AV QUEUE DELAY/DAY (VEH-H)	0.0
AV DIVN DELAY/DAY (VEH-H)	0.0
AV TOTAL DELAY/DAY (VEH-H)	0.0

AVERAGE ACCIDENT NUMBERS (PIA/DAY)	
MAIN ROUTE WITHOUT WORKS	0.0104
MAIN ROUTE WITH WORKS	0.0095
DIVERSION	0.0818

PIA: Personal Injury Accidents

IMPACTS ON ROAD USERS	
ROAD USER COSTS PER DAY (DOLLARS)	\$15,748
CONGESTED HOURS PER DAY*	1

*Delays Exceeding 15 Minutes

IH 39: STH 29E TO STH 34/CTH C (MARATHON COUNTY)
OFF-PEAK DAY CLOSURE
DIVERSION ROUTE: BUS 51 - STH 29

MAY
 Analyzed for 2009
 Construction Season

GRAPHICAL REPRESENTATION OF TRAFFIC MODEL INPUT AND OUTPUT
FRIDAY NORTHBOUND DIRECTION

