

IH 39: STH 21 TO CTH J (WAUSHARA AND MARQUETTE COUNTIES) CONTINUOUS (24 HOUR) CLOSURE DIVERSION ROUTE: CTH J - CTH CH - STH 21	AUGUST
	Analyzed for 2009 Construction Season

SUMMARY OF TRAFFIC MODEL OUTPUT

FRIDAY SOUTHBOUND DIRECTION

TIME OF DAY	FLOWS AND CAPACITY IN VEH/HR								AVERAGE SPEEDS IN MPH						
	MAIN ROUTE		ALTERNATE ROUTE		SITE CAPA CITY	FLOW MAIN ROUTE	FLOW DIVER -TING	TOTAL DIVN FLOW	AV.DEL PER VEH (MINS)	AVERAGE QUEUE (VEH)	MAIN ROUTE		ALTERNATE ROUTE		
	DEMAND FLOW	PCT HEAVY	NORMAL FLOW	PCT HEAVY							WITHOUT WORK ZN	WITH WORK ZN	SITE	WITHOUT WORK ZN	WITH WORK ZN
MID-1 AM	40	0.0	4	0.0	1500	40	0	4	0.43	0	66.3	63.6	45.3	44.0	44.0
1-2 AM	29	0.0	3	0.0	1500	29	0	3	0.43	0	66.3	63.6	45.4	44.0	44.0
2-3 AM	29	0.0	3	0.0	1500	29	0	3	0.43	0	66.3	63.6	45.4	44.0	44.0
3-4 AM	48	0.0	5	0.0	1500	48	0	5	0.43	0	66.3	63.5	45.3	44.0	44.0
4-5 AM	73	0.0	8	0.0	1500	73	0	8	0.43	0	66.3	63.5	45.2	44.0	44.0
5-6 AM	113	0.0	12	0.0	1500	113	0	12	0.43	0	66.2	63.4	45.0	43.9	43.9
6-7 AM	181	0.0	20	0.0	1500	181	0	20	0.44	0	66.1	63.2	44.8	43.8	43.8
7-8 AM	268	0.0	29	0.0	1500	268	0	29	0.45	0	65.9	63.0	44.4	43.7	43.7
8-9 AM	350	0.0	38	0.0	1500	350	0	38	0.46	0	65.7	62.8	44.1	43.5	43.5
9-10 AM	471	0.0	51	0.0	1500	471	0	51	0.47	0	65.5	62.6	43.6	43.3	43.3
10-11 AM	543	0.0	59	0.0	1500	543	0	59	0.48	0	65.4	62.4	43.3	43.2	43.2
11A-NOON	626	0.0	68	0.0	1500	626	0	68	0.48	0	65.2	62.2	43.0	43.1	43.1
NOON-1PM	642	0.0	70	0.0	1500	642	0	70	0.48	0	65.2	62.2	43.0	43.0	43.0
1-2 PM	657	0.0	72	0.0	1500	657	0	72	0.49	0	65.1	62.2	42.9	43.0	43.0
2-3 PM	648	0.0	71	0.0	1500	648	0	71	0.49	0	65.2	62.2	43.0	43.0	43.0
3-4 PM	635	0.0	69	0.0	1500	635	0	69	0.48	0	65.2	62.2	43.0	43.1	43.1
4-5 PM	600	0.0	66	0.0	1500	600	0	66	0.48	0	65.3	62.3	43.2	43.1	43.1
5-6 PM	603	0.0	66	0.0	1500	603	0	66	0.48	0	65.3	62.3	43.1	43.1	43.1
6-7 PM	445	0.0	49	0.0	1500	445	0	49	0.47	0	65.6	62.7	43.7	43.3	43.3
7-8 PM	333	0.0	36	0.0	1500	333	0	36	0.45	0	65.8	62.9	44.2	43.5	43.5
8-9 PM	252	0.0	27	0.0	1500	252	0	27	0.45	0	65.9	63.1	44.5	43.7	43.7
9-10 PM	189	0.0	21	0.0	1500	189	0	21	0.44	0	66.0	63.2	44.7	43.8	43.8
10-11 PM	122	0.0	13	0.0	1500	122	0	13	0.43	0	66.1	63.3	45.0	43.9	43.9
11PM-MID	78	0.0	9	0.0	1500	78	0	9	0.43	0	66.3	63.5	45.2	44.0	44.0

----- SITE BREAKDOWN DELAYS -----	
BREAKDOWN DURATION (MINS)	0
RANGE OF QUEUE DELAY - MIN	0.0
(VEH-H) MAX	0.0
RANGE OF DIVN DELAY - MIN	0.0
(VEH-H) MAX	0.0
AV BREAKDOWNS PER DAY	0.00
AV QUEUE DELAY/DAY (VEH-H)	0.0
AV DIVN DELAY/DAY (VEH-H)	0.0
AV TOTAL DELAY/DAY (VEH-H)	0.0

----- SITE ACCIDENT DELAYS -----	
ACCIDENT DURATION (MINS)	0
RANGE OF QUEUE DELAY - MIN	0.0
(VEH-H) MAX	0.0
RANGE OF DIVN DELAY - MIN	0.0
(VEH-H) MAX	0.0
AV ACCIDENTS PER DAY	0.00
AV QUEUE DELAY/DAY (VEH-H)	0.0
AV DIVN DELAY/DAY (VEH-H)	0.0
AV TOTAL DELAY/DAY (VEH-H)	0.0

AVERAGE ACCIDENT NUMBERS (PIA/DAY)	
MAIN ROUTE WITHOUT WORKS	0.0138
MAIN ROUTE WITH WORKS	0.0133
DIVERSION	0.0040

PIA: Personal Injury Accidents

IMPACTS ON ROAD USERS	
ROAD USER COSTS PER DAY (DOLLARS)	\$784
CONGESTED HOURS PER DAY*	0

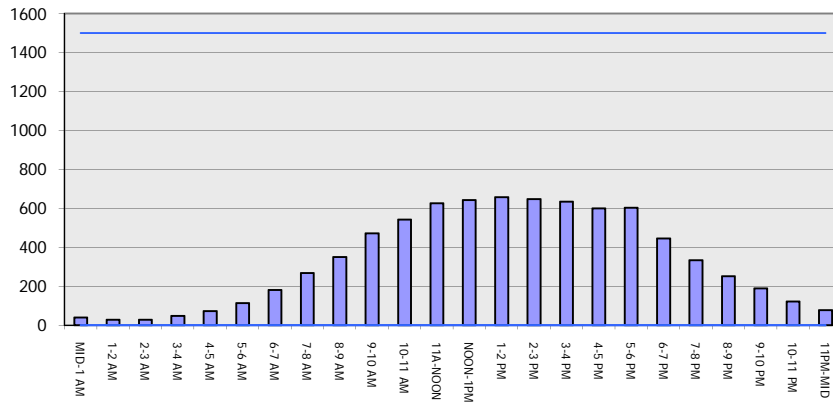
*Delays Exceeding 15 Minutes

IH 39: STH 21 TO CTH J (WAUSHARA AND MARQUETTE COUNTIES)
CONTINUOUS (24 HOUR) CLOSURE
DIVERSION ROUTE: CTH J - CTH CH - STH 21

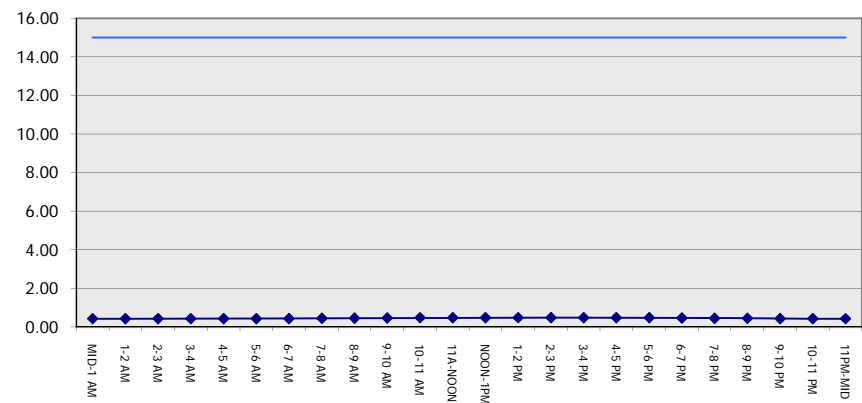
AUGUST
 Analyzed for 2009
 Construction Season

GRAPHICAL REPRESENTATION OF TRAFFIC MODEL INPUT AND OUTPUT
FRIDAY SOUTHBOUND DIRECTION

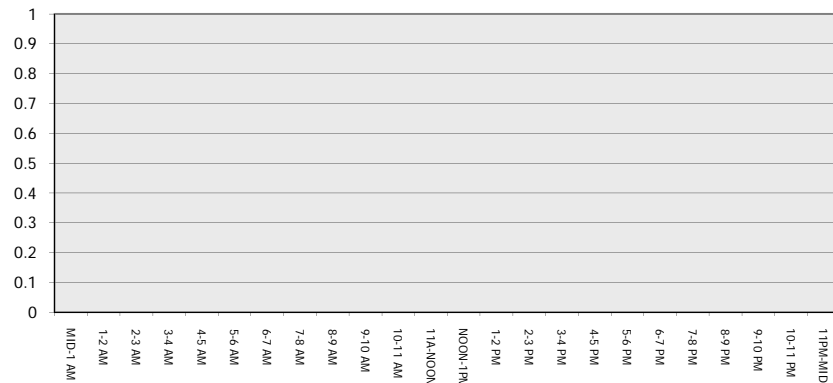
Main Route - Traffic Demand (Vehicles Per Hour)



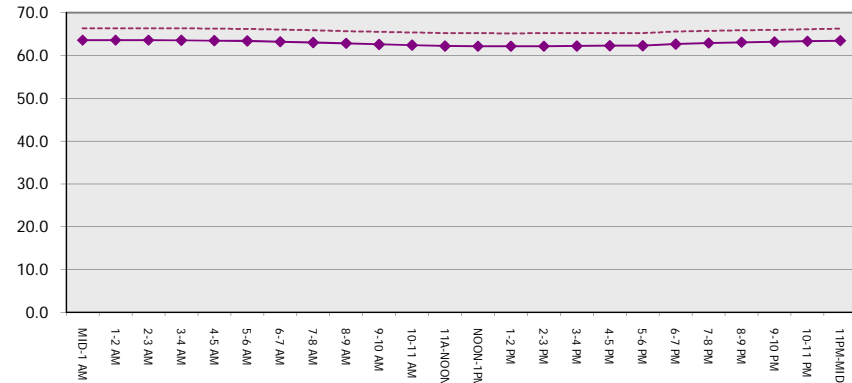
Main Route Average Delay Per Vehicle (Minutes)



Main Route - Average Queue Length (Vehicles)



Main Route - Average Speed (MPH)



IH 39: STH 21 TO CTH J (WAUSHARA AND MARQUETTE COUNTIES) CONTINUOUS (24 HOUR) CLOSURE DIVERSION ROUTE: CTH J - CTH CH - STH 21	AUGUST
	Analyzed for 2009 Construction Season

SUMMARY OF TRAFFIC MODEL OUTPUT

FRIDAY NORTHBOUND DIRECTION

TIME OF DAY	FLOWS AND CAPACITY IN VEH/HR								AVERAGE SPEEDS IN MPH						
	MAIN		DIVERSION		SITE CAPA CITY	FLOW MAIN ROUTE	FLOW DIVER -TING	TOTAL DIVN FLOW	AV.DEL PER VEH (MINS)	AVERAGE QUEUE (VEH)	MAIN ROUTE		SITE	ALTERNATE ROUTE	
	DEMAND FLOW	PCT HEAVY	NORMAL FLOW	PCT HEAVY							WITHOUT WORK ZN	WITH WORK ZN		WITHOUT WORK ZN	WITH WORK ZN
MID-1 AM	97	0.0	11	0.0	1500	97	0	11	0.43	0	66.2	63.4	45.1	43.9	43.9
1-2 AM	55	0.0	6	0.0	1500	55	0	6	0.43	0	66.3	63.5	45.3	44.0	44.0
2-3 AM	50	0.0	5	0.0	1500	50	0	5	0.43	0	66.3	63.5	45.3	44.0	44.0
3-4 AM	54	0.0	6	0.0	1500	54	0	6	0.43	0	66.3	63.5	45.3	44.0	44.0
4-5 AM	67	0.0	7	0.0	1500	67	0	7	0.43	0	66.3	63.5	45.2	44.0	44.0
5-6 AM	112	0.0	12	0.0	1500	112	0	12	0.43	0	66.2	63.4	45.0	43.9	43.9
6-7 AM	185	0.0	20	0.0	1500	185	0	20	0.44	0	66.0	63.2	44.8	43.8	43.8
7-8 AM	303	0.0	33	0.0	1500	303	0	33	0.45	0	65.8	63.0	44.3	43.6	43.6
8-9 AM	484	0.0	53	0.0	1500	484	0	53	0.47	0	65.5	62.5	43.6	43.3	43.3
9-10 AM	631	0.0	69	0.0	1500	631	0	69	0.48	0	65.2	62.2	43.0	43.1	43.1
10-11 AM	736	0.0	80	0.0	1500	736	0	80	0.49	0	65.0	62.0	42.6	42.9	42.9
11A-NOON	823	0.0	90	0.0	1500	823	0	90	0.50	0	64.8	61.8	42.3	42.8	42.8
NOON-1PM	850	0.0	93	0.0	1500	850	0	93	0.50	0	64.8	61.7	42.2	42.7	42.7
1-2 PM	965	0.0	105	0.0	1500	965	0	105	0.52	0	64.6	61.5	41.8	42.5	42.5
2-3 PM	1070	0.0	117	0.0	1500	1070	0	117	0.53	0	64.4	61.2	41.4	42.4	42.4
3-4 PM	1130	0.0	123	0.0	1500	1130	0	123	0.55	0	64.3	61.0	40.8	42.3	42.3
4-5 PM	1137	0.0	124	0.0	1500	1137	0	124	0.56	0	64.3	60.9	40.6	42.3	42.3
5-6 PM	1140	0.0	125	0.0	1500	1140	0	125	0.56	0	64.3	60.9	40.4	42.2	42.2
6-7 PM	1148	0.0	125	0.0	1500	1148	0	125	0.57	0	64.3	60.9	40.2	42.2	42.2
7-8 PM	985	0.0	108	0.0	1500	985	0	108	0.52	0	64.5	61.4	41.7	42.5	42.5
8-9 PM	782	0.0	85	0.0	1500	782	0	85	0.50	0	65.0	61.9	42.5	42.8	42.8
9-10 PM	545	0.0	60	0.0	1500	545	0	60	0.48	0	65.4	62.4	43.3	43.2	43.2
10-11 PM	365	0.0	40	0.0	1500	365	0	40	0.46	0	65.7	62.8	44.0	43.5	43.5
11PM-MID	210	0.0	23	0.0	1500	210	0	23	0.44	0	66.0	63.2	44.6	43.8	43.8

----- SITE BREAKDOWN DELAYS -----	
BREAKDOWN DURATION (MINS)	0
RANGE OF QUEUE DELAY - MIN	0.0
(VEH-H) MAX	0.0
RANGE OF DIVN DELAY - MIN	0.0
(VEH-H) MAX	0.0
AV BREAKDOWNS PER DAY	0.00
AV QUEUE DELAY/DAY (VEH-H)	0.0
AV DIVN DELAY/DAY (VEH-H)	0.0
AV TOTAL DELAY/DAY (VEH-H)	0.0

----- SITE ACCIDENT DELAYS -----	
ACCIDENT DURATION (MINS)	0
RANGE OF QUEUE DELAY - MIN	0.0
(VEH-H) MAX	0.0
RANGE OF DIVN DELAY - MIN	0.0
(VEH-H) MAX	0.0
AV ACCIDENTS PER DAY	0.00
AV QUEUE DELAY/DAY (VEH-H)	0.0
AV DIVN DELAY/DAY (VEH-H)	0.0
AV TOTAL DELAY/DAY (VEH-H)	0.0

AVERAGE ACCIDENT NUMBERS (PIA/DAY)	
MAIN ROUTE WITHOUT WORKS	0.0242
MAIN ROUTE WITH WORKS	0.0232
DIVERSION	0.0071

PIA: Personal Injury Accidents

IMPACTS ON ROAD USERS	
ROAD USER COSTS PER DAY (DOLLARS)	\$1,497
CONGESTED HOURS PER DAY*	0

*Delays Exceeding 15 Minutes

IH 39: STH 21 TO CTH J (WAUSHARA AND MARQUETTE COUNTIES)
CONTINUOUS (24 HOUR) CLOSURE
DIVERSION ROUTE: CTH J - CTH CH - STH 21

AUGUST
 Analyzed for 2009
 Construction Season

GRAPHICAL REPRESENTATION OF TRAFFIC MODEL INPUT AND OUTPUT
FRIDAY NORTHBOUND DIRECTION

