

**IH 39: STH 21 TO CTH J (WAUSHARA AND MARQUETTE COUNTIES)  
CONTINUOUS (24 HOUR) CLOSURE  
DIVERSION ROUTE: CTH J - CTH CH - STH 21**

**MAY**  
Analyzed for 2009  
Construction Season

**SUMMARY OF TRAFFIC MODEL OUTPUT**

SUNDAY SOUTHBOUND DIRECTION

TIME OF DAY	FLOWS AND CAPACITY IN VEH/HR							AVERAGE SPEEDS IN MPH							
	MAIN ROUTE		ALTERNATE ROUTE		SITE CAPA CITY	FLOW MAIN ROUTE	FLOW DIVER -TING	TOTAL DIVN FLOW	AV.DEL PER VEH (MINS)	AVERAGE QUEUE (VEH)	MAIN ROUTE		ALTERNATE ROUTE		
	DEMAND FLOW	PCT HEAVY	NORMAL FLOW	PCT HEAVY							WITHOUT WORK ZN	WITH WORK ZN	SITE	WITHOUT WORK ZN	WITH WORK ZN
MID-1 AM	32	0.0	3	0.0	1500	32	0	3	0.43	0	66.3	63.6	45.4	44.0	44.0
1-2 AM	17	0.0	2	0.0	1500	17	0	2	0.42	0	66.3	63.6	45.5	44.1	44.1
2-3 AM	14	0.0	2	0.0	1500	14	0	2	0.42	0	66.4	63.6	45.5	44.1	44.1
3-4 AM	16	0.0	2	0.0	1500	16	0	2	0.42	0	66.4	63.6	45.5	44.1	44.1
4-5 AM	20	0.0	2	0.0	1500	20	0	2	0.42	0	66.3	63.6	45.4	44.1	44.1
5-6 AM	33	0.0	4	0.0	1500	33	0	4	0.43	0	66.3	63.6	45.3	44.0	44.0
6-7 AM	68	0.0	7	0.0	1500	68	0	7	0.43	0	66.3	63.5	45.2	44.0	44.0
7-8 AM	166	0.0	18	0.0	1500	166	0	18	0.44	0	66.1	63.3	44.8	43.8	43.8
8-9 AM	287	0.0	31	0.0	1500	287	0	31	0.45	0	65.8	63.0	44.3	43.7	43.7
9-10 AM	428	0.0	47	0.0	1500	428	0	47	0.46	0	65.6	62.7	43.8	43.4	43.4
10-11 AM	596	0.0	65	0.0	1500	596	0	65	0.48	0	65.3	62.3	43.2	43.2	43.2
11A-NOON	680	0.0	74	0.0	1500	680	0	74	0.49	0	65.1	62.1	42.8	43.0	43.0
NOON-1PM	724	0.0	79	0.0	1500	724	0	79	0.49	0	65.0	62.0	42.7	42.9	42.9
1-2 PM	779	0.0	85	0.0	1500	779	0	85	0.50	0	65.0	61.9	42.5	42.8	42.8
2-3 PM	797	0.0	87	0.0	1500	797	0	87	0.50	0	64.9	61.9	42.4	42.8	42.8
3-4 PM	844	0.0	92	0.0	1500	844	0	92	0.50	0	64.8	61.7	42.2	42.7	42.7
4-5 PM	809	0.0	88	0.0	1500	809	0	88	0.50	0	64.9	61.8	42.4	42.8	42.8
5-6 PM	731	0.0	80	0.0	1500	731	0	80	0.49	0	65.0	62.0	42.7	42.9	42.9
6-7 PM	567	0.0	62	0.0	1500	567	0	62	0.48	0	65.3	62.3	43.2	43.2	43.2
7-8 PM	441	0.0	48	0.0	1500	441	0	48	0.47	0	65.6	62.7	43.7	43.4	43.4
8-9 PM	287	0.0	31	0.0	1500	287	0	31	0.45	0	65.8	63.0	44.3	43.7	43.7
9-10 PM	172	0.0	19	0.0	1500	172	0	19	0.44	0	66.1	63.3	44.8	43.8	43.8
10-11 PM	99	0.0	11	0.0	1500	99	0	11	0.43	0	66.2	63.4	45.1	43.9	43.9
11PM-MID	63	0.0	7	0.0	1500	63	0	7	0.43	0	66.3	63.5	45.3	44.0	44.0

*----- SITE BREAKDOWN DELAYS -----*	
BREAKDOWN DURATION (MINS)	0
RANGE OF QUEUE DELAY - MIN (VEH-H) MAX	0.0
RANGE OF DIVN DELAY - MIN (VEH-H) MAX	0.0
AV BREAKDOWNS PER DAY	0.00
AV QUEUE DELAY/DAY (VEH-H)	0.0
AV DIVN DELAY/DAY (VEH-H)	0.0
AV TOTAL DELAY/DAY (VEH-H)	0.0

*----- SITE ACCIDENT DELAYS -----*	
ACCIDENT DURATION (MINS)	0
RANGE OF QUEUE DELAY - MIN (VEH-H) MAX	0.0
RANGE OF DIVN DELAY - MIN (VEH-H) MAX	0.0
AV ACCIDENTS PER DAY	0.00
AV QUEUE DELAY/DAY (VEH-H)	0.0
AV DIVN DELAY/DAY (VEH-H)	0.0
AV TOTAL DELAY/DAY (VEH-H)	0.0

AVERAGE ACCIDENT NUMBERS (PIA/DAY)	
MAIN ROUTE WITHOUT WORKS	0.0150
MAIN ROUTE WITH WORKS	0.0145
DIVERSION	0.0044

PIA: Personal Injury Accidents

IMPACTS ON ROAD USERS	
ROAD USER COSTS PER DAY ( DOLLARS)	\$1,076
CONGESTED HOURS PER DAY*	0

\*Delays Exceeding 15 Minutes

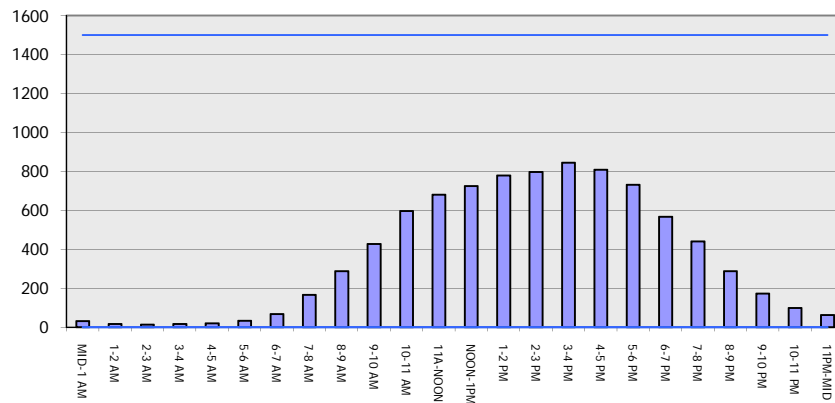
**IH 39: STH 21 TO CTH J (WAUSHARA AND MARQUETTE COUNTIES)**  
**CONTINUOUS (24 HOUR) CLOSURE**  
**DIVERSION ROUTE: CTH J - CTH CH - STH 21**

**MAY**  
 Analyzed for 2009  
 Construction Season

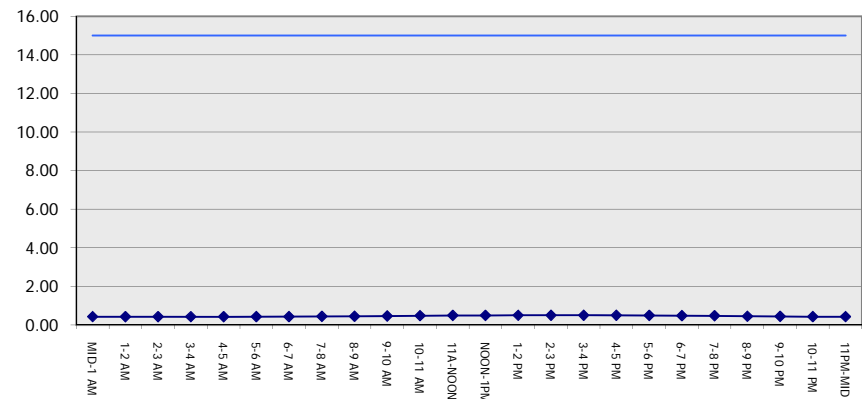
**GRAPHICAL REPRESENTATION OF TRAFFIC MODEL INPUT AND OUTPUT**

**SUNDAY SOUTHBOUND DIRECTION**

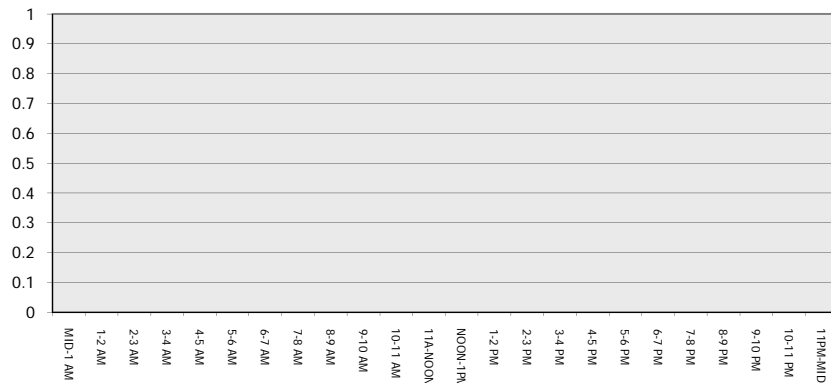
**Main Route - Traffic Demand (Vehicles Per Hour)**



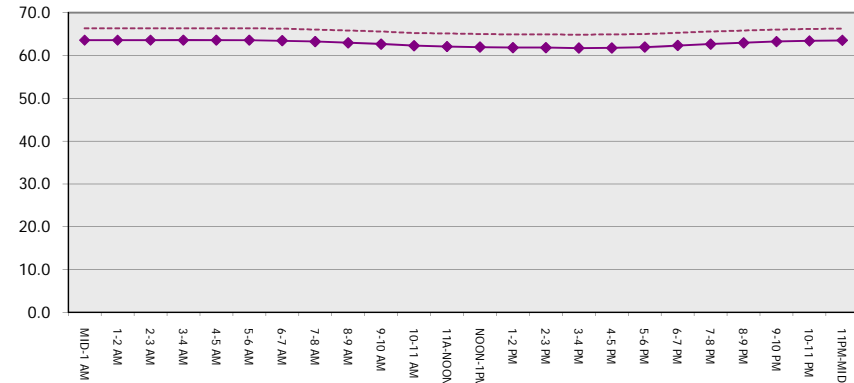
**Main Route Average Delay Per Vehicle (Minutes)**



**Main Route - Average Queue Length (Vehicles)**



**Main Route - Average Speed (MPH)**



<b>IH 39: STH 21 TO CTH J (WAUSHARA AND MARQUETTE COUNTIES)</b> <b>CONTINUOUS (24 HOUR) CLOSURE</b> <b>DIVERSION ROUTE: CTH J - CTH CH - STH 21</b>	<b>MAY</b>
	Analyzed for 2009 Construction Season

**SUMMARY OF TRAFFIC MODEL OUTPUT**

SUNDAY NORTHBOUND DIRECTION

TIME OF DAY	FLOWS AND CAPACITY IN VEH/HR								AVERAGE SPEEDS IN MPH						
	MAIN		DIVERSION		SITE CAPA CITY	FLOW MAIN ROUTE	FLOW DIVER -TING	TOTAL DIVN FLOW	AV.DEL PER VEH (MINS)	AVERAGE QUEUE (VEH)	MAIN ROUTE		SITE	ALTERNATE ROUTE	
	DEMAND FLOW	PCT HEAVY	NORMAL FLOW	PCT HEAVY							WITHOUT WORK ZN	WITH WORK ZN		WITHOUT WORK ZN	WITH WORK ZN
MID-1 AM	52	0.0	6	0.0	1500	52	0	6	0.43	0	66.3	63.5	45.3	44.0	44.0
1-2 AM	29	0.0	3	0.0	1500	29	0	3	0.43	0	66.3	63.6	45.4	44.0	44.0
2-3 AM	27	0.0	3	0.0	1500	27	0	3	0.43	0	66.3	63.6	45.4	44.0	44.0
3-4 AM	14	0.0	1	0.0	1500	14	0	1	0.42	0	66.4	63.6	45.5	44.1	44.1
4-5 AM	15	0.0	2	0.0	1500	15	0	2	0.42	0	66.4	63.6	45.5	44.1	44.1
5-6 AM	22	0.0	2	0.0	1500	22	0	2	0.42	0	66.3	63.6	45.4	44.1	44.1
6-7 AM	37	0.0	4	0.0	1500	37	0	4	0.43	0	66.3	63.6	45.3	44.0	44.0
7-8 AM	92	0.0	10	0.0	1500	92	0	10	0.43	0	66.2	63.5	45.1	44.0	44.0
8-9 AM	184	0.0	20	0.0	1500	184	0	20	0.44	0	66.0	63.2	44.8	43.8	43.8
9-10 AM	271	0.0	30	0.0	1500	271	0	30	0.45	0	65.9	63.0	44.4	43.7	43.7
10-11 AM	365	0.0	40	0.0	1500	365	0	40	0.46	0	65.7	62.8	44.0	43.5	43.5
11A-NOON	452	0.0	49	0.0	1500	452	0	49	0.47	0	65.5	62.6	43.7	43.3	43.3
NOON-1PM	467	0.0	51	0.0	1500	467	0	51	0.47	0	65.5	62.6	43.7	43.3	43.3
1-2 PM	456	0.0	50	0.0	1500	456	0	50	0.47	0	65.5	62.6	43.7	43.3	43.3
2-3 PM	470	0.0	51	0.0	1500	470	0	51	0.47	0	65.5	62.6	43.6	43.3	43.3
3-4 PM	485	0.0	53	0.0	1500	485	0	53	0.47	0	65.5	62.5	43.6	43.3	43.3
4-5 PM	497	0.0	54	0.0	1500	497	0	54	0.47	0	65.5	62.5	43.5	43.3	43.3
5-6 PM	479	0.0	52	0.0	1500	479	0	52	0.47	0	65.5	62.5	43.6	43.3	43.3
6-7 PM	409	0.0	45	0.0	1500	409	0	45	0.46	0	65.6	62.7	43.8	43.4	43.4
7-8 PM	358	0.0	39	0.0	1500	358	0	39	0.46	0	65.7	62.8	44.0	43.5	43.5
8-9 PM	265	0.0	29	0.0	1500	265	0	29	0.45	0	65.9	63.0	44.4	43.7	43.7
9-10 PM	181	0.0	20	0.0	1500	181	0	20	0.44	0	66.1	63.2	44.8	43.8	43.8
10-11 PM	124	0.0	14	0.0	1500	124	0	14	0.43	0	66.1	63.3	45.0	43.9	43.9
11PM-MID	70	0.0	8	0.0	1500	70	0	8	0.43	0	66.3	63.5	45.2	44.0	44.0

*----- SITE BREAKDOWN DELAYS -----*	
BREAKDOWN DURATION (MINS)	0
RANGE OF QUEUE DELAY - MIN	0.0
(VEH-H) MAX	0.0
RANGE OF DIVN DELAY - MIN	0.0
(VEH-H) MAX	0.0
AV BREAKDOWNS PER DAY	0.00
AV QUEUE DELAY/DAY (VEH-H)	0.0
AV DIVN DELAY/DAY (VEH-H)	0.0
AV TOTAL DELAY/DAY (VEH-H)	0.0

*----- SITE ACCIDENT DELAYS -----*	
ACCIDENT DURATION (MINS)	0
RANGE OF QUEUE DELAY - MIN	0.0
(VEH-H) MAX	0.0
RANGE OF DIVN DELAY - MIN	0.0
(VEH-H) MAX	0.0
AV ACCIDENTS PER DAY	0.00
AV QUEUE DELAY/DAY (VEH-H)	0.0
AV DIVN DELAY/DAY (VEH-H)	0.0
AV TOTAL DELAY/DAY (VEH-H)	0.0

AVERAGE ACCIDENT NUMBERS (PIA/DAY)	
MAIN ROUTE WITHOUT WORKS	0.0101
MAIN ROUTE WITH WORKS	0.0097
DIVERSION	0.0030

PIA: Personal Injury Accidents

IMPACTS ON ROAD USERS	
ROAD USER COSTS PER DAY ( DOLLARS)	\$690
CONGESTED HOURS PER DAY*	0

\*Delays Exceeding 15 Minutes

**IH 39: STH 21 TO CTH J (WAUSHARA AND MARQUETTE COUNTIES)**  
**CONTINUOUS (24 HOUR) CLOSURE**  
**DIVERSION ROUTE: CTH J - CTH CH - STH 21**

**MAY**  
 Analyzed for 2009  
 Construction Season

**GRAPHICAL REPRESENTATION OF TRAFFIC MODEL INPUT AND OUTPUT**  
**SUNDAY NORTHBOUND DIRECTION**

