

**IH 39: STH 21 TO CTH J (WAUSHARA AND MARQUETTE COUNTIES)  
CONTINUOUS (24 HOUR) CLOSURE  
DIVERSION ROUTE: CTH J - CTH CH - STH 21**

**MAY**  
Analyzed for 2009  
Construction Season

**SUMMARY OF TRAFFIC MODEL OUTPUT**

SATURDAY SOUTHBOUND DIRECTION

TIME OF DAY	FLOWS AND CAPACITY IN VEH/HR								AVERAGE SPEEDS IN MPH						
	MAIN ROUTE		ALTERNATE ROUTE		SITE CAPA CITY	FLOW MAIN ROUTE	FLOW DIVER -TING	TOTAL DIVN FLOW	AV.DEL PER VEH (MINS)	AVERAGE QUEUE (VEH)	MAIN ROUTE		ALTERNATE ROUTE		
	DEMAND FLOW	PCT HEAVY	NORMAL FLOW	PCT HEAVY							WITHOUT WORK ZN	WITH WORK ZN	SITE	WITHOUT WORK ZN	WITH WORK ZN
MID-1 AM	42	0.0	5	0.0	1500	42	0	5	0.43	0	66.3	63.5	45.3	44.0	44.0
1-2 AM	24	0.0	3	0.0	1500	24	0	3	0.42	0	66.3	63.6	45.4	44.0	44.0
2-3 AM	21	0.0	2	0.0	1500	21	0	2	0.42	0	66.3	63.6	45.4	44.1	44.1
3-4 AM	25	0.0	3	0.0	1500	25	0	3	0.42	0	66.3	63.6	45.4	44.0	44.0
4-5 AM	41	0.0	4	0.0	1500	41	0	4	0.43	0	66.3	63.6	45.3	44.0	44.0
5-6 AM	53	0.0	6	0.0	1500	53	0	6	0.43	0	66.3	63.5	45.3	44.0	44.0
6-7 AM	130	0.0	14	0.0	1500	130	0	14	0.44	0	66.1	63.3	45.0	43.9	43.9
7-8 AM	252	0.0	27	0.0	1500	252	0	27	0.45	0	65.9	63.1	44.5	43.7	43.7
8-9 AM	351	0.0	38	0.0	1500	351	0	38	0.46	0	65.7	62.8	44.1	43.5	43.5
9-10 AM	449	0.0	49	0.0	1500	449	0	49	0.47	0	65.6	62.6	43.7	43.3	43.3
10-11 AM	508	0.0	56	0.0	1500	508	0	56	0.47	0	65.5	62.5	43.5	43.3	43.3
11A-NOON	463	0.0	51	0.0	1500	463	0	51	0.47	0	65.5	62.6	43.7	43.3	43.3
NOON-1PM	411	0.0	45	0.0	1500	411	0	45	0.46	0	65.6	62.7	43.8	43.4	43.4
1-2 PM	388	0.0	42	0.0	1500	388	0	42	0.46	0	65.6	62.8	44.0	43.5	43.5
2-3 PM	362	0.0	40	0.0	1500	362	0	40	0.46	0	65.7	62.8	44.0	43.5	43.5
3-4 PM	365	0.0	40	0.0	1500	365	0	40	0.46	0	65.7	62.8	44.0	43.5	43.5
4-5 PM	342	0.0	37	0.0	1500	342	0	37	0.46	0	65.8	62.8	44.1	43.5	43.5
5-6 PM	288	0.0	31	0.0	1500	288	0	31	0.45	0	65.8	63.0	44.3	43.7	43.7
6-7 PM	255	0.0	28	0.0	1500	255	0	28	0.45	0	65.9	63.1	44.5	43.7	43.7
7-8 PM	194	0.0	21	0.0	1500	194	0	21	0.44	0	66.0	63.2	44.7	43.8	43.8
8-9 PM	174	0.0	19	0.0	1500	174	0	19	0.44	0	66.1	63.3	44.8	43.8	43.8
9-10 PM	125	0.0	14	0.0	1500	125	0	14	0.43	0	66.1	63.3	45.0	43.9	43.9
10-11 PM	75	0.0	8	0.0	1500	75	0	8	0.43	0	66.3	63.5	45.2	44.0	44.0
11PM-MID	50	0.0	5	0.0	1500	50	0	5	0.43	0	66.3	63.5	45.3	44.0	44.0

*----- SITE BREAKDOWN DELAYS -----*	
BREAKDOWN DURATION (MINS)	0
RANGE OF QUEUE DELAY - MIN (VEH-H) MAX	0.0
RANGE OF DIVN DELAY - MIN (VEH-H) MAX	0.0
AV BREAKDOWNS PER DAY	0.00
AV QUEUE DELAY/DAY (VEH-H)	0.0
AV DIVN DELAY/DAY (VEH-H)	0.0
AV TOTAL DELAY/DAY (VEH-H)	0.0

*----- SITE ACCIDENT DELAYS -----*	
ACCIDENT DURATION (MINS)	0
RANGE OF QUEUE DELAY - MIN (VEH-H) MAX	0.0
RANGE OF DIVN DELAY - MIN (VEH-H) MAX	0.0
AV ACCIDENTS PER DAY	0.00
AV QUEUE DELAY/DAY (VEH-H)	0.0
AV DIVN DELAY/DAY (VEH-H)	0.0
AV TOTAL DELAY/DAY (VEH-H)	0.0

AVERAGE ACCIDENT NUMBERS (PIA/DAY)	
MAIN ROUTE WITHOUT WORKS	0.0093
MAIN ROUTE WITH WORKS	0.0090
DIVERSION	0.0027

PIA: Personal Injury Accidents

IMPACTS ON ROAD USERS	
ROAD USER COSTS PER DAY ( DOLLARS)	\$619
CONGESTED HOURS PER DAY*	0

\*Delays Exceeding 15 Minutes

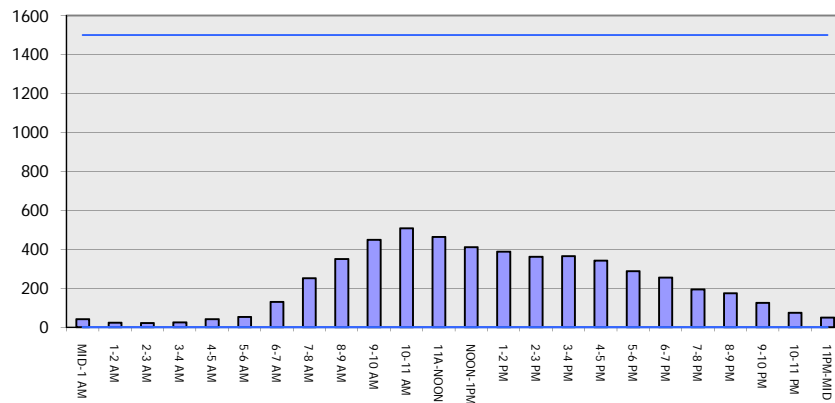
**IH 39: STH 21 TO CTH J (WAUSHARA AND MARQUETTE COUNTIES)**  
**CONTINUOUS (24 HOUR) CLOSURE**  
**DIVERSION ROUTE: CTH J - CTH CH - STH 21**

**MAY**  
 Analyzed for 2009  
 Construction Season

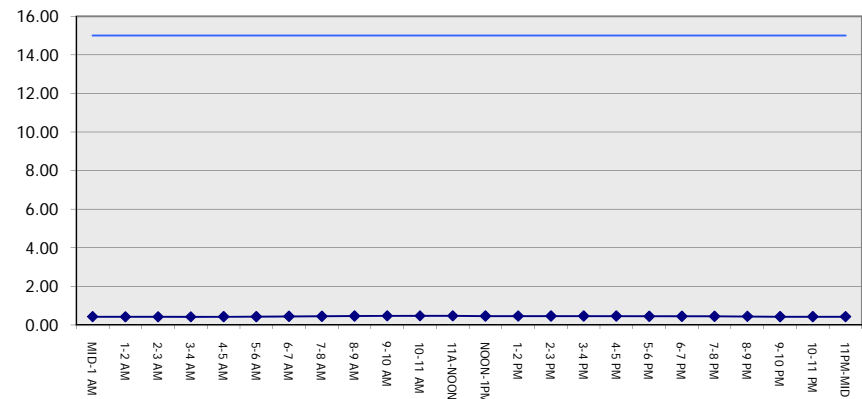
**GRAPHICAL REPRESENTATION OF TRAFFIC MODEL INPUT AND OUTPUT**

**SATURDAY SOUTHBOUND DIRECTION**

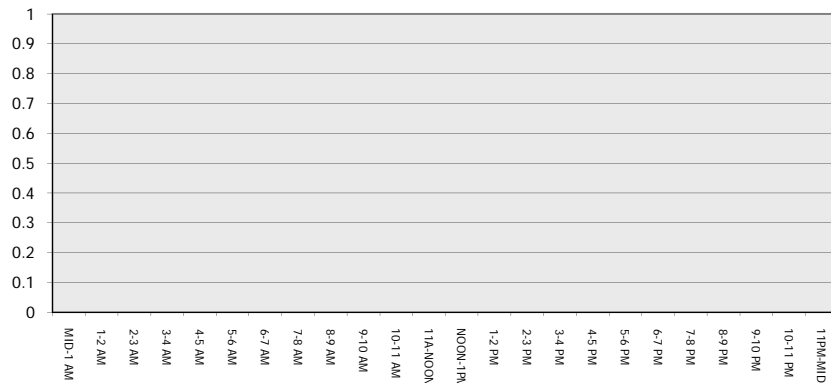
**Main Route - Traffic Demand (Vehicles Per Hour)**



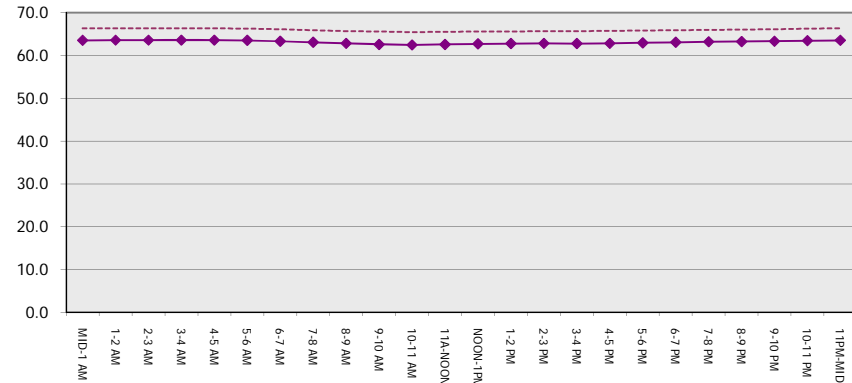
**Main Route Average Delay Per Vehicle (Minutes)**



**Main Route - Average Queue Length (Vehicles)**



**Main Route - Average Speed (MPH)**



**IH 39: STH 21 TO CTH J (WAUSHARA AND MARQUETTE COUNTIES)  
CONTINUOUS (24 HOUR) CLOSURE  
DIVERSION ROUTE: CTH J - CTH CH - STH 21**

**MAY**  
Analyzed for 2009  
Construction Season

**SUMMARY OF TRAFFIC MODEL OUTPUT**  
SATURDAY NORTHBOUND DIRECTION

TIME OF DAY	FLOWS AND CAPACITY IN VEH/HR								AVERAGE SPEEDS IN MPH						
	MAIN		DIVERSION		SITE CAPA CITY	FLOW MAIN ROUTE	FLOW DIVER -TING	TOTAL DIVN FLOW	AV.DEL PER VEH (MINS)	AVERAGE QUEUE (VEH)	MAIN ROUTE		SITE	ALTERNATE ROUTE	
	DEMAND FLOW	PCT HEAVY	NORMAL FLOW	PCT HEAVY							WITHOUT WORK ZN	WITH WORK ZN		WITHOUT WORK ZN	WITH WORK ZN
MID-1 AM	88	0.0	10	0.0	1500	88	0	10	0.43	0	66.2	63.5	45.1	44.0	44.0
1-2 AM	55	0.0	6	0.0	1500	55	0	6	0.43	0	66.3	63.5	45.3	44.0	44.0
2-3 AM	45	0.0	5	0.0	1500	45	0	5	0.43	0	66.3	63.5	45.3	44.0	44.0
3-4 AM	43	0.0	5	0.0	1500	43	0	5	0.43	0	66.3	63.5	45.3	44.0	44.0
4-5 AM	41	0.0	4	0.0	1500	41	0	4	0.43	0	66.3	63.6	45.3	44.0	44.0
5-6 AM	72	0.0	8	0.0	1500	72	0	8	0.43	0	66.3	63.5	45.2	44.0	44.0
6-7 AM	130	0.0	14	0.0	1500	130	0	14	0.44	0	66.1	63.3	45.0	43.9	43.9
7-8 AM	263	0.0	29	0.0	1500	263	0	29	0.45	0	65.9	63.0	44.4	43.7	43.7
8-9 AM	385	0.0	42	0.0	1500	385	0	42	0.46	0	65.6	62.8	44.0	43.5	43.5
9-10 AM	549	0.0	60	0.0	1500	549	0	60	0.48	0	65.4	62.4	43.3	43.2	43.2
10-11 AM	626	0.0	68	0.0	1500	626	0	68	0.48	0	65.2	62.2	43.0	43.1	43.1
11A-NOON	607	0.0	66	0.0	1500	607	0	66	0.48	0	65.3	62.3	43.1	43.1	43.1
NOON-1PM	528	0.0	58	0.0	1500	528	0	58	0.47	0	65.4	62.4	43.4	43.2	43.2
1-2 PM	481	0.0	53	0.0	1500	481	0	53	0.47	0	65.5	62.5	43.6	43.3	43.3
2-3 PM	458	0.0	50	0.0	1500	458	0	50	0.47	0	65.5	62.6	43.7	43.3	43.3
3-4 PM	421	0.0	46	0.0	1500	421	0	46	0.46	0	65.6	62.7	43.8	43.4	43.4
4-5 PM	396	0.0	43	0.0	1500	396	0	43	0.46	0	65.6	62.7	43.9	43.5	43.5
5-6 PM	356	0.0	39	0.0	1500	356	0	39	0.46	0	65.7	62.8	44.1	43.5	43.5
6-7 PM	303	0.0	33	0.0	1500	303	0	33	0.45	0	65.8	63.0	44.3	43.6	43.6
7-8 PM	285	0.0	31	0.0	1500	285	0	31	0.45	0	65.8	63.0	44.3	43.7	43.7
8-9 PM	227	0.0	25	0.0	1500	227	0	25	0.44	0	66.0	63.2	44.6	43.7	43.7
9-10 PM	181	0.0	20	0.0	1500	181	0	20	0.44	0	66.1	63.2	44.8	43.8	43.8
10-11 PM	124	0.0	14	0.0	1500	124	0	14	0.43	0	66.1	63.3	45.0	43.9	43.9
11PM-MID	82	0.0	9	0.0	1500	82	0	9	0.43	0	66.3	63.5	45.1	44.0	44.0

**\*----- SITE BREAKDOWN DELAYS -----\***

BREAKDOWN DURATION (MINS)	0
RANGE OF QUEUE DELAY - MIN (VEH-H) MAX	0.0
RANGE OF DIVN DELAY - MIN (VEH-H) MAX	0.0
AV BREAKDOWNS PER DAY	0.00
AV QUEUE DELAY/DAY (VEH-H)	0.0
AV DIVN DELAY/DAY (VEH-H)	0.0
AV TOTAL DELAY/DAY (VEH-H)	0.0

**\*----- SITE ACCIDENT DELAYS -----\***

ACCIDENT DURATION (MINS)	0
RANGE OF QUEUE DELAY - MIN (VEH-H) MAX	0.0
RANGE OF DIVN DELAY - MIN (VEH-H) MAX	0.0
AV ACCIDENTS PER DAY	0.00
AV QUEUE DELAY/DAY (VEH-H)	0.0
AV DIVN DELAY/DAY (VEH-H)	0.0
AV TOTAL DELAY/DAY (VEH-H)	0.0

**AVERAGE ACCIDENT NUMBERS (PIA/DAY)**

MAIN ROUTE WITHOUT WORKS	0.0117
MAIN ROUTE WITH WORKS	0.0113
DIVERSION	0.0034

PIA: Personal Injury Accidents

**IMPACTS ON ROAD USERS**

ROAD USER COSTS PER DAY ( DOLLARS)	\$784
CONGESTED HOURS PER DAY*	0

\*Delays Exceeding 15 Minutes

**IH 39: STH 21 TO CTH J (WAUSHARA AND MARQUETTE COUNTIES)**  
**CONTINUOUS (24 HOUR) CLOSURE**  
**DIVERSION ROUTE: CTH J - CTH CH - STH 21**

**MAY**  
 Analyzed for 2009  
 Construction Season

**GRAPHICAL REPRESENTATION OF TRAFFIC MODEL INPUT AND OUTPUT**  
**SATURDAY NORTHBOUND DIRECTION**

