

<b>USH 10: CTH K TO CTH B (PORTAGE COUNTY)                  CONTINUOUS (24 HOUR) CLOSURE                  NO DIVERSION ROUTE (MAX QUEUE METHOD)</b>	<b>OCTOBER</b>
	Analyzed for 2009 Construction Season

**SUMMARY OF TRAFFIC MODEL OUTPUT**

SATURDAY WESTBOUND DIRECTION

TIME OF DAY	FLOWS AND CAPACITY IN VEH/HR						AVERAGE SPEEDS IN MPH			
	MAIN ROUTE		SITE CAPA CITY	FLOW		AV.DEL PER VEH (MINS)	AVERAGE QUEUE (VEH)	MAIN ROUTE		SITE
	DEMAND FLOW	PCT HEAVY		MAIN ROUTE	'DIVER TED'			WITHOUT WORK ZONE	WITH WORK ZONE	
MID-1 AM	58	0.0	1500	58	0	0.50	0	63.8	56.3	41.8
1-2 AM	42	0.0	1500	42	0	0.50	0	63.8	56.3	41.9
2-3 AM	27	0.0	1500	27	0	0.50	0	63.8	56.3	41.9
3-4 AM	32	0.0	1500	32	0	0.50	0	63.8	56.3	41.9
4-5 AM	29	0.0	1500	29	0	0.50	0	63.8	56.3	41.9
5-6 AM	70	0.0	1500	70	0	0.51	0	63.8	56.2	41.7
6-7 AM	128	0.0	1500	128	0	0.51	0	63.7	56.1	41.5
7-8 AM	212	0.0	1500	212	0	0.52	0	63.5	55.8	41.2
8-9 AM	316	0.0	1500	316	0	0.53	0	63.3	55.6	40.9
9-10 AM	413	0.0	1500	413	0	0.54	0	63.2	55.3	40.6
10-11 AM	438	0.0	1500	438	0	0.54	0	63.1	55.3	40.5
11AM-NOON	418	0.0	1500	418	0	0.54	0	63.1	55.3	40.6
NOON-1PM	408	0.0	1500	408	0	0.54	0	63.2	55.3	40.6
1-2 PM	366	0.0	1500	366	0	0.53	0	63.2	55.5	40.7
2-3 PM	352	0.0	1500	352	0	0.53	0	63.2	55.5	40.8
3-4 PM	334	0.0	1500	334	0	0.53	0	63.3	55.5	40.9
4-5 PM	345	0.0	1500	345	0	0.53	0	63.3	55.5	40.8
5-6 PM	305	0.0	1500	305	0	0.53	0	63.3	55.6	40.9
6-7 PM	263	0.0	1500	263	0	0.52	0	63.4	55.7	41.1
7-8 PM	221	0.0	1500	221	0	0.52	0	63.5	55.8	41.2
8-9 PM	190	0.0	1500	190	0	0.52	0	63.5	55.9	41.4
9-10 PM	137	0.0	1500	137	0	0.51	0	63.7	56.0	41.5
10-11 PM	107	0.0	1500	107	0	0.51	0	63.7	56.1	41.6
11PM-MID	75	0.0	1500	75	0	0.51	0	63.8	56.2	41.7

*----- SITE BREAKDOWN DELAYS -----*	
BREAKDOWN DURATION (MINS)	0
RANGE OF QUEUE DELAY - MIN (VEH-H) MAX	0.0
AV BREAKDOWNS PER DAY	0.00
AV QUEUE DELAY/DAY (VEH-H)	0.0
AV TOTAL DELAY/DAY (VEH-H)	0.0

*----- SITE ACCIDENT DELAYS -----*	
BREAKDOWN DURATION (MINS)	0
RANGE OF QUEUE DELAY - MIN (VEH-H) MAX	0
AV BREAKDOWNS PER DAY	0
AV QUEUE DELAY/DAY (VEH-H)	0
AV TOTAL DELAY/DAY (VEH-H)	0

AVERAGE ACCIDENT NUMBERS (PIA/DAY)	
MAIN ROUTE WITHOUT WORKS	0.0035
MAIN ROUTE WITH WORKS	0.0041
'DIVERSION'	0.0000
PIA: Personal Injury Accidents	
IMPACTS ON ROAD USERS	
ROAD USER COSTS PER DAY	\$713
CONGESTED HOURS PER DAY*	0

\*Delays Exceeding User-Specified Maximum

**USH 10: CTH K TO CTH B (PORTAGE COUNTY)  
CONTINUOUS (24 HOUR) CLOSURE  
NO DIVERSION ROUTE (MAX QUEUE METHOD)**

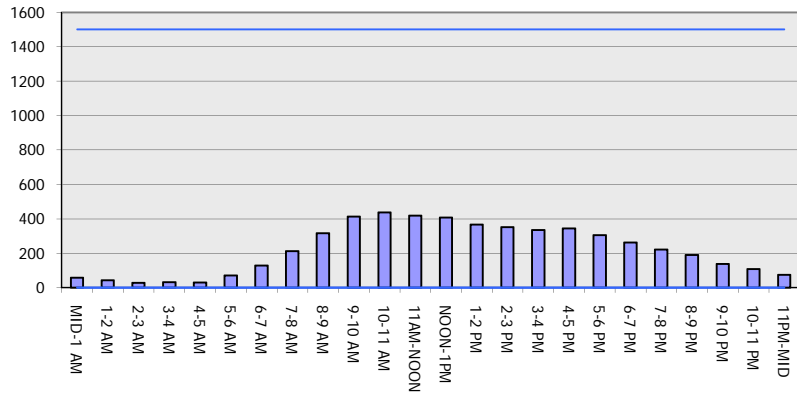
**OCTOBER**

Analyzed for 2009  
Construction Season

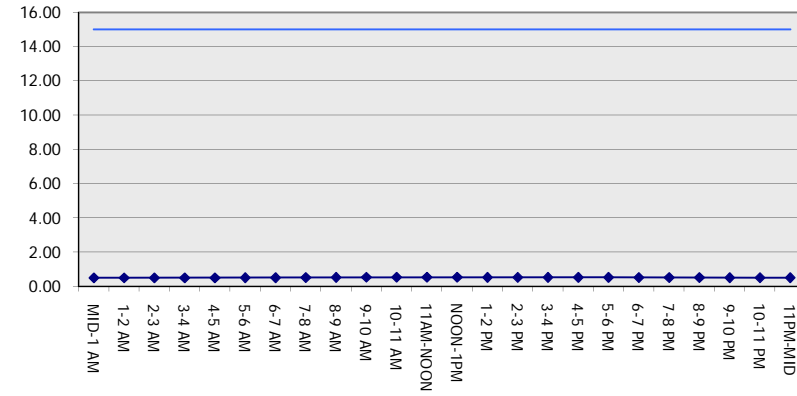
**GRAPHICAL REPRESENTATION OF TRAFFIC MODEL INPUT AND OUTPUT**

**SATURDAY WESTBOUND DIRECTION**

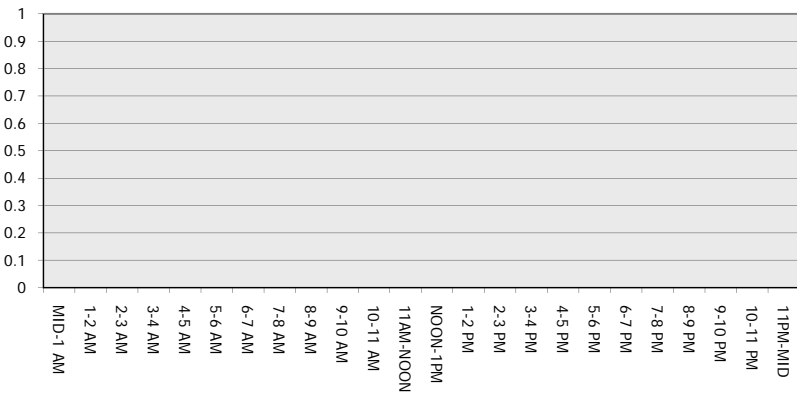
**Main Route - Traffic Demand (Vehicles Per Hour)**



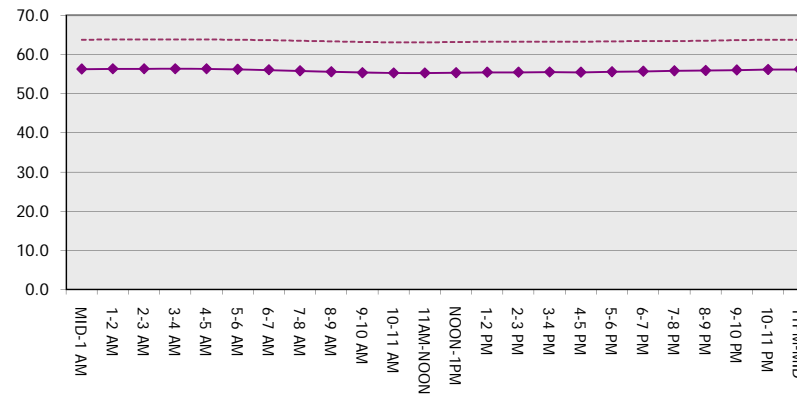
**Main Route Average Delay Per Vehicle (Minutes)**



**Main Route - Average Queue Length (Vehicles)**



**Main Route - Average Speed (MPH)**



<b>USH 10: CTH K TO CTH B (PORTAGE COUNTY)                  CONTINUOUS (24 HOUR) CLOSURE                  NO DIVERSION ROUTE (MAX QUEUE METHOD)</b>	<b>OCTOBER</b>
	Analyzed for 2009 Construction Season

**SUMMARY OF TRAFFIC MODEL OUTPUT**

SATURDAY EASTBOUND DIRECTION

TIME OF DAY	FLOWS AND CAPACITY IN VEH/HR							AVERAGE SPEEDS IN MPH		
	MAIN ROUTE		SITE CAPA CITY	FLOW		AV.DEL PER VEH (MINS)	AVERAGE QUEUE (VEH)	MAIN ROUTE		SITE
	DEMAND FLOW	PCT HEAVY		MAIN ROUTE	'DIVER TED'			WITHOUT WORK ZONE	WITH WORK ZONE	
MID-1 AM	46	0.0	1500	46	0	0.50	0	63.8	56.3	41.9
1-2 AM	27	0.0	1500	27	0	0.50	0	63.8	56.3	41.9
2-3 AM	21	0.0	1500	21	0	0.50	0	63.8	56.3	41.9
3-4 AM	25	0.0	1500	25	0	0.50	0	63.8	56.3	41.9
4-5 AM	25	0.0	1500	25	0	0.50	0	63.8	56.3	41.9
5-6 AM	53	0.0	1500	53	0	0.50	0	63.8	56.3	41.8
6-7 AM	91	0.0	1500	91	0	0.51	0	63.7	56.1	41.7
7-8 AM	145	0.0	1500	145	0	0.51	0	63.7	56.0	41.5
8-9 AM	242	0.0	1500	242	0	0.52	0	63.5	55.8	41.2
9-10 AM	299	0.0	1500	299	0	0.53	0	63.3	55.6	41.0
10-11 AM	357	0.0	1500	357	0	0.53	0	63.2	55.5	40.7
11AM-NOON	401	0.0	1500	401	0	0.54	0	63.2	55.3	40.6
NOON-1PM	379	0.0	1500	379	0	0.53	0	63.2	55.4	40.7
1-2 PM	354	0.0	1500	354	0	0.53	0	63.2	55.5	40.8
2-3 PM	334	0.0	1500	334	0	0.53	0	63.3	55.5	40.9
3-4 PM	316	0.0	1500	316	0	0.53	0	63.3	55.6	40.9
4-5 PM	316	0.0	1500	316	0	0.53	0	63.3	55.6	40.9
5-6 PM	287	0.0	1500	287	0	0.53	0	63.3	55.6	41.0
6-7 PM	232	0.0	1500	232	0	0.52	0	63.5	55.8	41.2
7-8 PM	214	0.0	1500	214	0	0.52	0	63.5	55.8	41.2
8-9 PM	184	0.0	1500	184	0	0.52	0	63.5	55.9	41.4
9-10 PM	147	0.0	1500	147	0	0.51	0	63.7	56.0	41.5
10-11 PM	96	0.0	1500	96	0	0.51	0	63.7	56.1	41.7
11PM-MID	62	0.0	1500	62	0	0.50	0	63.8	56.3	41.8

*----- SITE BREAKDOWN DELAYS -----*	
BREAKDOWN DURATION (MINS)	0
RANGE OF QUEUE DELAY - MIN (VEH-H) MAX	0.0
AV BREAKDOWNS PER DAY	0.00
AV QUEUE DELAY/DAY (VEH-H)	0.0
AV TOTAL DELAY/DAY (VEH-H)	0.0

*----- SITE ACCIDENT DELAYS -----*	
BREAKDOWN DURATION (MINS)	0
RANGE OF QUEUE DELAY - MIN (VEH-H) MAX	0
AV BREAKDOWNS PER DAY	0
AV QUEUE DELAY/DAY (VEH-H)	0
AV TOTAL DELAY/DAY (VEH-H)	0

AVERAGE ACCIDENT NUMBERS (PIA/DAY)	
MAIN ROUTE WITHOUT WORKS	0.0031
MAIN ROUTE WITH WORKS	0.0036
'DIVERSION'	0.0000

PIA: Personal Injury Accidents

ECONOMIC IMPACT ON ROAD USERS	
ROAD USER COSTS PER DAY	\$624
CONGESTED HOURS PER DAY*	0

\*Delays Exceeding User-Specified Maximum

**USH 10: CTH K TO CTH B (PORTAGE COUNTY)  
CONTINUOUS (24 HOUR) CLOSURE  
NO DIVERSION ROUTE (MAX QUEUE METHOD)**

**OCTOBER**

Analyzed for 2009  
Construction Season

**GRAPHICAL REPRESENTATION OF TRAFFIC MODEL INPUT AND OUTPUT**  
**SATURDAY EASTBOUND DIRECTION**

