

<b>USH 10: CTH K TO CTH B (PORTAGE COUNTY)                  CONTINUOUS (24 HOUR) CLOSURE                  NO DIVERSION ROUTE (MAX QUEUE METHOD)</b>	<b>AUGUST</b>
	Analyzed for 2009 Construction Season

**SUMMARY OF TRAFFIC MODEL OUTPUT**

SATURDAY WESTBOUND DIRECTION

TIME OF DAY	FLOWS AND CAPACITY IN VEH/HR						AVERAGE SPEEDS IN MPH			
	MAIN ROUTE		SITE CAPA CITY	FLOW		AV. DEL PER VEH (MINS)	AVERAGE QUEUE (VEH)	MAIN ROUTE		SITE
	DEMAND FLOW	PCT HEAVY		MAIN ROUTE	'DIVER TED'			WITHOUT WORK ZONE	WITH WORK ZONE	
MID-1 AM	67	0.0	1500	67	0	0.51	0	63.8	56.2	41.8
1-2 AM	54	0.0	1500	54	0	0.50	0	63.8	56.3	41.8
2-3 AM	32	0.0	1500	32	0	0.50	0	63.8	56.3	41.9
3-4 AM	24	0.0	1500	24	0	0.50	0	63.8	56.3	41.9
4-5 AM	37	0.0	1500	37	0	0.50	0	63.8	56.3	41.9
5-6 AM	68	0.0	1500	68	0	0.51	0	63.8	56.2	41.7
6-7 AM	130	0.0	1500	130	0	0.51	0	63.7	56.1	41.5
7-8 AM	217	0.0	1500	217	0	0.52	0	63.5	55.8	41.2
8-9 AM	344	0.0	1500	344	0	0.53	0	63.3	55.5	40.8
9-10 AM	482	0.0	1500	482	0	0.54	0	63.0	55.1	40.4
10-11 AM	541	0.0	1500	541	0	0.55	0	62.9	55.0	40.2
11AM-NOON	587	0.0	1500	587	0	0.55	0	62.8	54.8	40.0
NOON-1PM	500	0.0	1500	500	0	0.55	0	63.0	55.1	40.3
1-2 PM	431	0.0	1500	431	0	0.54	0	63.1	55.3	40.5
2-3 PM	412	0.0	1500	412	0	0.54	0	63.2	55.3	40.6
3-4 PM	389	0.0	1500	389	0	0.54	0	63.2	55.4	40.7
4-5 PM	371	0.0	1500	371	0	0.53	0	63.2	55.4	40.7
5-6 PM	329	0.0	1500	329	0	0.53	0	63.3	55.5	40.9
6-7 PM	296	0.0	1500	296	0	0.53	0	63.3	55.6	41.0
7-8 PM	267	0.0	1500	267	0	0.52	0	63.4	55.7	41.0
8-9 PM	234	0.0	1500	234	0	0.52	0	63.5	55.8	41.2
9-10 PM	188	0.0	1500	188	0	0.52	0	63.5	55.9	41.4
10-11 PM	142	0.0	1500	142	0	0.51	0	63.7	56.0	41.5
11PM-MID	94	0.0	1500	94	0	0.51	0	63.7	56.1	41.7

**\*----- SITE BREAKDOWN DELAYS -----\***

BREAKDOWN DURATION (MINS)	0
RANGE OF QUEUE DELAY - MIN (VEH-H) MAX	0.0
AV BREAKDOWNS PER DAY	0.00
AV QUEUE DELAY/DAY (VEH-H)	0.0
AV TOTAL DELAY/DAY (VEH-H)	0.0

**\*----- SITE ACCIDENT DELAYS -----\***

BREAKDOWN DURATION (MINS)	0
RANGE OF QUEUE DELAY - MIN (VEH-H) MAX	0
AV BREAKDOWNS PER DAY	0
AV QUEUE DELAY/DAY (VEH-H)	0
AV TOTAL DELAY/DAY (VEH-H)	0

**AVERAGE ACCIDENT NUMBERS (PIA/DAY)**

MAIN ROUTE WITHOUT WORKS	0.0041
MAIN ROUTE WITH WORKS	0.0048
'DIVERSION'	0.0000

PIA: Personal Injury Accidents

**IMPACTS ON ROAD USERS**

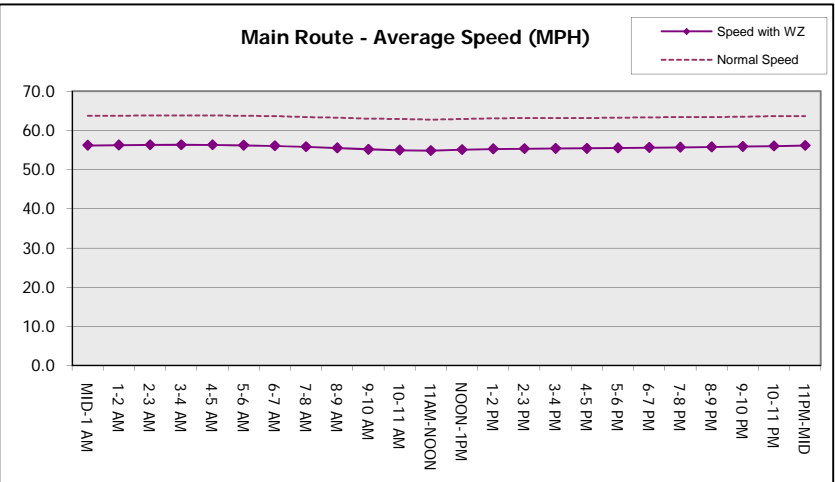
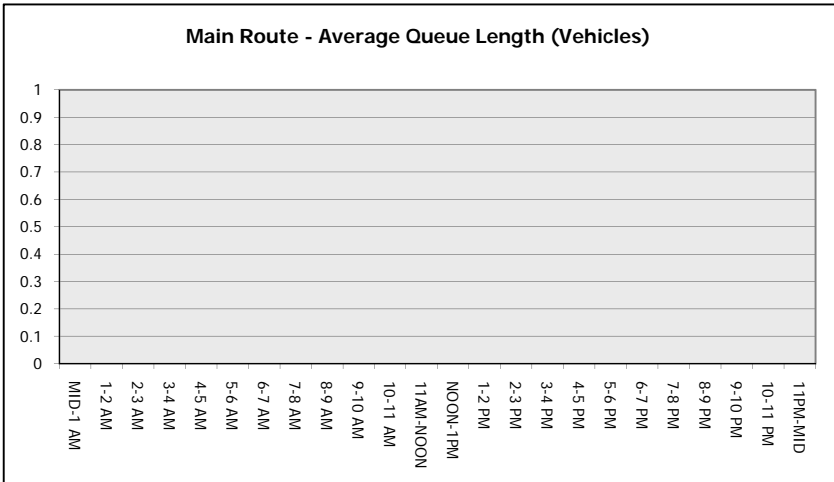
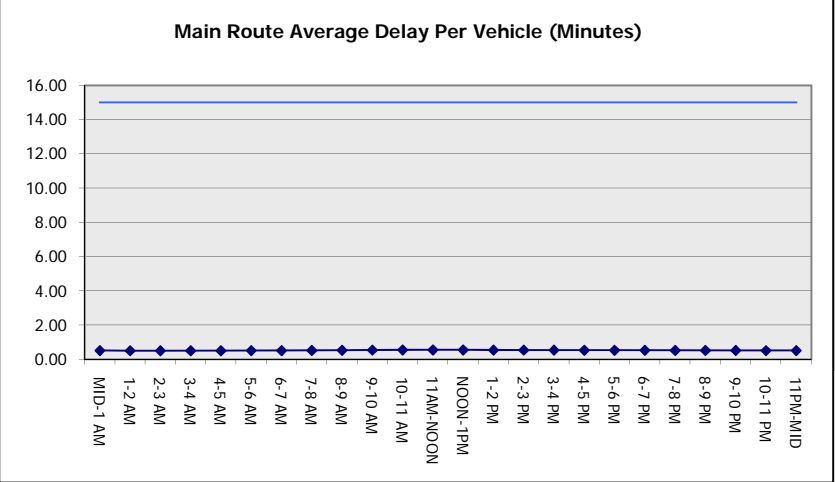
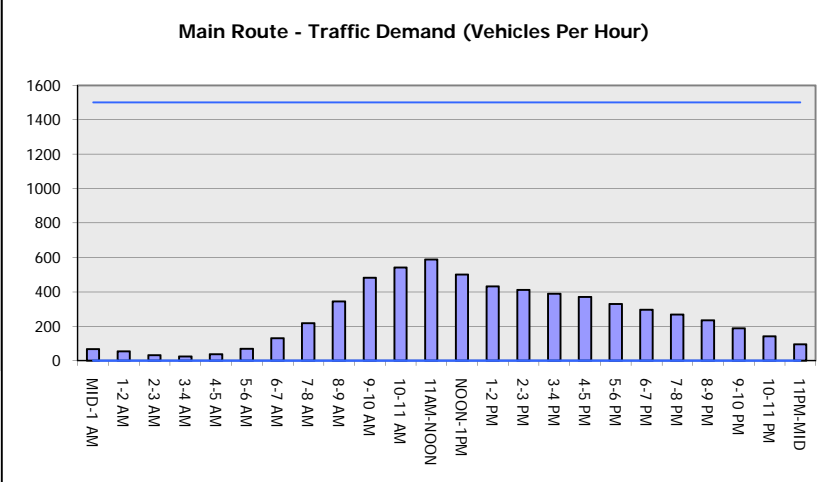
ROAD USER COSTS PER DAY	\$853
CONGESTED HOURS PER DAY*	0

\*Delays Exceeding User-Specified Maximum

**USH 10: CTH K TO CTH B (PORTAGE COUNTY)  
CONTINUOUS (24 HOUR) CLOSURE  
NO DIVERSION ROUTE (MAX QUEUE METHOD)**

**AUGUST**  
Analyzed for 2009  
Construction Season

**GRAPHICAL REPRESENTATION OF TRAFFIC MODEL INPUT AND OUTPUT**  
**SATURDAY WESTBOUND DIRECTION**



<b>USH 10: CTH K TO CTH B (PORTAGE COUNTY)                  CONTINUOUS (24 HOUR) CLOSURE                  NO DIVERSION ROUTE (MAX QUEUE METHOD)</b>	<b>AUGUST</b>
	Analyzed for 2009 Construction Season

**SUMMARY OF TRAFFIC MODEL OUTPUT**

SATURDAY EASTBOUND DIRECTION

TIME OF DAY	FLOWS AND CAPACITY IN VEH/HR							AVERAGE SPEEDS IN MPH		
	MAIN ROUTE		SITE CAPA CITY	FLOW		AV.DEL PER VEH (MINS)	AVERAGE QUEUE (VEH)	MAIN ROUTE		SITE
	DEMAND FLOW	PCT HEAVY		MAIN ROUTE	'DIVER TED'			WITHOUT WORK ZONE	WITH WORK ZONE	
MID-1 AM	55	0.0	1500	55	0	0.50	0	63.8	56.3	41.8
1-2 AM	29	0.0	1500	29	0	0.50	0	63.8	56.3	41.9
2-3 AM	24	0.0	1500	24	0	0.50	0	63.8	56.3	41.9
3-4 AM	28	0.0	1500	28	0	0.50	0	63.8	56.3	41.9
4-5 AM	40	0.0	1500	40	0	0.50	0	63.8	56.3	41.9
5-6 AM	63	0.0	1500	63	0	0.50	0	63.8	56.3	41.8
6-7 AM	107	0.0	1500	107	0	0.51	0	63.7	56.1	41.6
7-8 AM	183	0.0	1500	183	0	0.52	0	63.6	55.9	41.4
8-9 AM	286	0.0	1500	286	0	0.53	0	63.3	55.6	41.0
9-10 AM	377	0.0	1500	377	0	0.53	0	63.2	55.4	40.7
10-11 AM	447	0.0	1500	447	0	0.54	0	63.1	55.2	40.5
11AM-NOON	546	0.0	1500	546	0	0.55	0	62.9	55.0	40.1
NOON-1PM	494	0.0	1500	494	0	0.55	0	63.0	55.1	40.3
1-2 PM	448	0.0	1500	448	0	0.54	0	63.1	55.2	40.5
2-3 PM	398	0.0	1500	398	0	0.54	0	63.2	55.3	40.6
3-4 PM	390	0.0	1500	390	0	0.54	0	63.2	55.4	40.7
4-5 PM	358	0.0	1500	358	0	0.53	0	63.2	55.5	40.7
5-6 PM	295	0.0	1500	295	0	0.53	0	63.3	55.6	41.0
6-7 PM	264	0.0	1500	264	0	0.52	0	63.4	55.7	41.1
7-8 PM	229	0.0	1500	229	0	0.52	0	63.5	55.8	41.2
8-9 PM	178	0.0	1500	178	0	0.52	0	63.6	56.0	41.4
9-10 PM	160	0.0	1500	160	0	0.51	0	63.6	56.0	41.4
10-11 PM	110	0.0	1500	110	0	0.51	0	63.7	56.1	41.6
11PM-MID	80	0.0	1500	80	0	0.51	0	63.8	56.2	41.7

*----- SITE BREAKDOWN DELAYS -----*	
BREAKDOWN DURATION (MINS)	0
RANGE OF QUEUE DELAY - MIN (VEH-H) MAX	0.0
AV BREAKDOWNS PER DAY	0.00
AV QUEUE DELAY/DAY (VEH-H)	0.0
AV TOTAL DELAY/DAY (VEH-H)	0.0

*----- SITE ACCIDENT DELAYS -----*	
BREAKDOWN DURATION (MINS)	0
RANGE OF QUEUE DELAY - MIN (VEH-H) MAX	0
AV BREAKDOWNS PER DAY	0
AV QUEUE DELAY/DAY (VEH-H)	0
AV TOTAL DELAY/DAY (VEH-H)	0

AVERAGE ACCIDENT NUMBERS (PIA/DAY)	
MAIN ROUTE WITHOUT WORKS	0.0037
MAIN ROUTE WITH WORKS	0.0043
'DIVERSION'	0.0000

PIA: Personal Injury Accidents

ECONOMIC IMPACT ON ROAD USERS	
ROAD USER COSTS PER DAY	\$762
CONGESTED HOURS PER DAY*	0

\*Delays Exceeding User-Specified Maximum

**USH 10: CTH K TO CTH B (PORTAGE COUNTY)  
CONTINUOUS (24 HOUR) CLOSURE  
NO DIVERSION ROUTE (MAX QUEUE METHOD)**

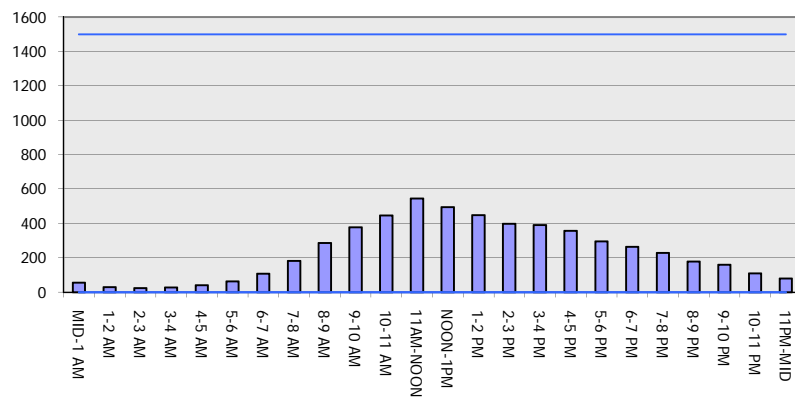
**AUGUST**

Analyzed for 2009  
Construction Season

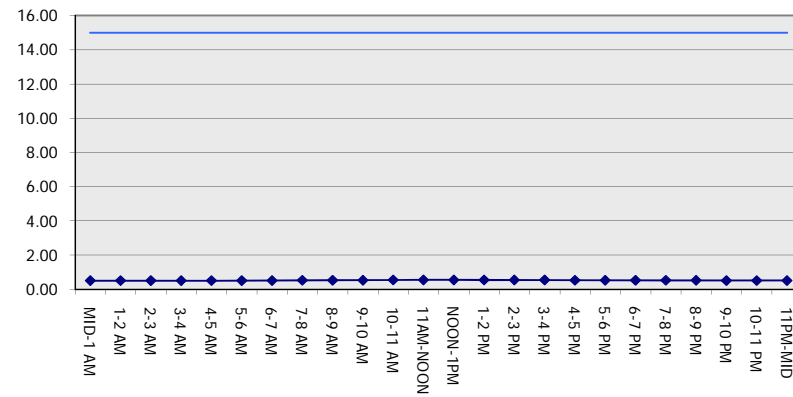
**GRAPHICAL REPRESENTATION OF TRAFFIC MODEL INPUT AND OUTPUT**

**SATURDAY EASTBOUND DIRECTION**

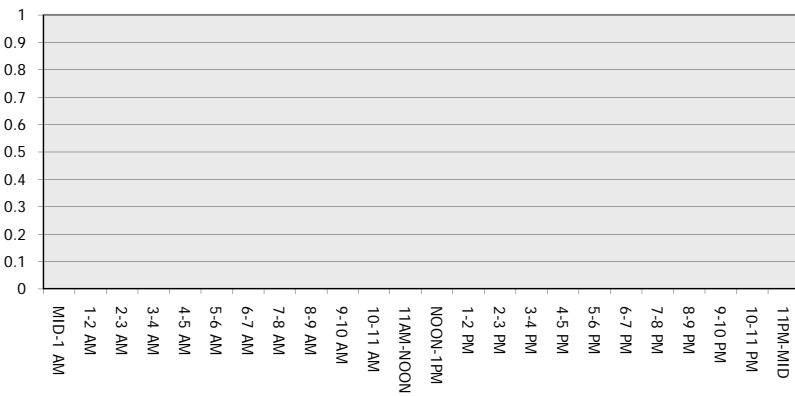
**Main Route - Traffic Demand (Vehicles Per Hour)**



**Main Route Average Delay Per Vehicle (Minutes)**



**Main Route - Average Queue Length (Vehicles)**



**Main Route - Average Speed (MPH)**

