

<b>USH 10: CTH K TO CTH B (PORTAGE COUNTY)                  CONTINUOUS (24 HOUR) CLOSURE                  NO DIVERSION ROUTE (MAX QUEUE METHOD)</b>	<b>AUGUST</b>
	Analyzed for 2009 Construction Season

**SUMMARY OF TRAFFIC MODEL OUTPUT**

FRIDAY WESTBOUND DIRECTION

TIME OF DAY	FLOWS AND CAPACITY IN VEH/HR						AVERAGE SPEEDS IN MPH			
	MAIN ROUTE		SITE CAPA CITY	FLOW		AV.DEL PER VEH (MINS)	AVERAGE QUEUE (VEH)	MAIN ROUTE		SITE
	DEMAND FLOW	PCT HEAVY		MAIN ROUTE	'DIVER TED'			WITHOUT WORK ZONE	WITH WORK ZONE	
MID-1 AM	54	0.0	1500	54	0	0.50	0	63.8	56.3	41.8
1-2 AM	45	0.0	1500	45	0	0.50	0	63.8	56.3	41.9
2-3 AM	28	0.0	1500	28	0	0.50	0	63.8	56.3	41.9
3-4 AM	44	0.0	1500	44	0	0.50	0	63.8	56.3	41.9
4-5 AM	65	0.0	1500	65	0	0.50	0	63.8	56.3	41.8
5-6 AM	121	0.0	1500	121	0	0.51	0	63.7	56.1	41.5
6-7 AM	270	0.0	1500	270	0	0.52	0	63.4	55.7	41.0
7-8 AM	404	0.0	1500	404	0	0.54	0	63.2	55.3	40.6
8-9 AM	414	0.0	1500	414	0	0.54	0	63.2	55.3	40.6
9-10 AM	469	0.0	1500	469	0	0.54	0	63.0	55.1	40.4
10-11 AM	517	0.0	1500	517	0	0.55	0	62.9	55.0	40.2
11AM-NOON	525	0.0	1500	525	0	0.55	0	62.9	55.0	40.2
NOON-1PM	532	0.0	1500	532	0	0.55	0	62.9	55.0	40.2
1-2 PM	584	0.0	1500	584	0	0.55	0	62.8	54.8	40.0
2-3 PM	632	0.0	1500	632	0	0.56	0	62.7	54.7	39.9
3-4 PM	653	0.0	1500	653	0	0.56	0	62.7	54.6	39.8
4-5 PM	670	0.0	1500	670	0	0.56	0	62.7	54.6	39.7
5-6 PM	690	0.0	1500	690	0	0.56	0	62.6	54.6	39.7
6-7 PM	578	0.0	1500	578	0	0.55	0	62.8	54.9	40.1
7-8 PM	493	0.0	1500	493	0	0.55	0	63.0	55.1	40.3
8-9 PM	375	0.0	1500	375	0	0.53	0	63.2	55.4	40.7
9-10 PM	284	0.0	1500	284	0	0.53	0	63.3	55.6	41.0
10-11 PM	168	0.0	1500	168	0	0.51	0	63.6	56.0	41.4
11PM-MID	89	0.0	1500	89	0	0.51	0	63.7	56.1	41.7

*----- SITE BREAKDOWN DELAYS -----*	
BREAKDOWN DURATION (MINS)	0
RANGE OF QUEUE DELAY - MIN (VEH-H) MAX	0.0
AV BREAKDOWNS PER DAY	0.00
AV QUEUE DELAY/DAY (VEH-H)	0.0
AV TOTAL DELAY/DAY (VEH-H)	0.0

*----- SITE ACCIDENT DELAYS -----*	
BREAKDOWN DURATION (MINS)	0
RANGE OF QUEUE DELAY - MIN (VEH-H) MAX	0
AV BREAKDOWNS PER DAY	0
AV QUEUE DELAY/DAY (VEH-H)	0
AV TOTAL DELAY/DAY (VEH-H)	0

AVERAGE ACCIDENT NUMBERS (PIA/DAY)	
MAIN ROUTE WITHOUT WORKS	0.0057
MAIN ROUTE WITH WORKS	0.0067
'DIVERSION'	0.0000
PIA: Personal Injury Accidents	
IMPACTS ON ROAD USERS	
ROAD USER COSTS PER DAY	\$999
CONGESTED HOURS PER DAY*	0

\*Delays Exceeding User-Specified Maximum

**USH 10: CTH K TO CTH B (PORTAGE COUNTY)  
CONTINUOUS (24 HOUR) CLOSURE  
NO DIVERSION ROUTE (MAX QUEUE METHOD)**

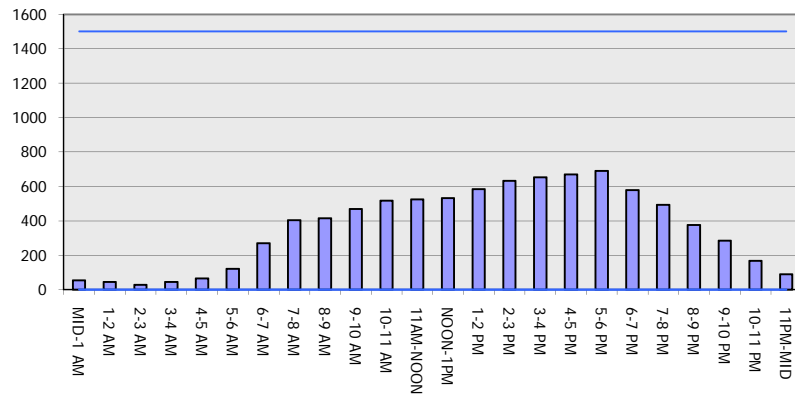
**AUGUST**

Analyzed for 2009  
Construction Season

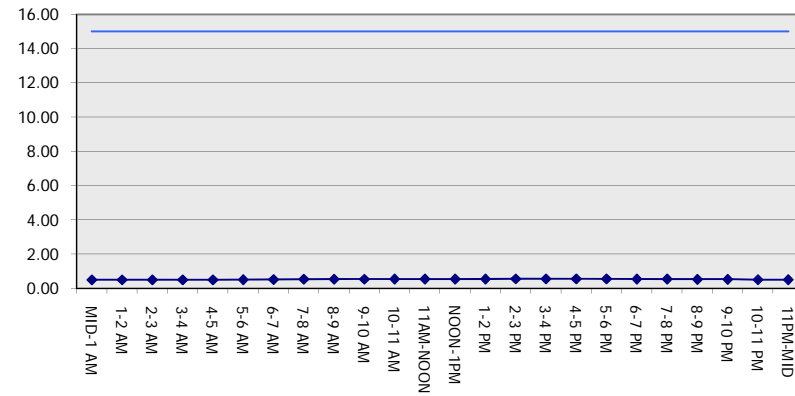
**GRAPHICAL REPRESENTATION OF TRAFFIC MODEL INPUT AND OUTPUT**

**FRIDAY WESTBOUND DIRECTION**

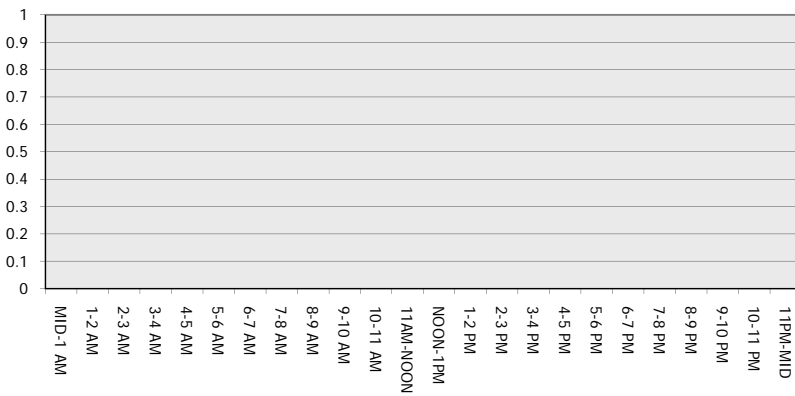
**Main Route - Traffic Demand (Vehicles Per Hour)**



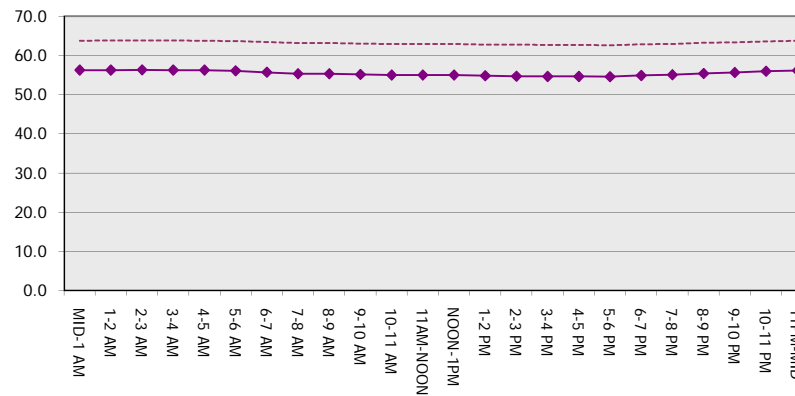
**Main Route Average Delay Per Vehicle (Minutes)**



**Main Route - Average Queue Length (Vehicles)**



**Main Route - Average Speed (MPH)**



<b>USH 10: CTH K TO CTH B (PORTAGE COUNTY)                  CONTINUOUS (24 HOUR) CLOSURE                  NO DIVERSION ROUTE (MAX QUEUE METHOD)</b>	<b>AUGUST</b>
	Analyzed for 2009 Construction Season

**SUMMARY OF TRAFFIC MODEL OUTPUT**

FRIDAY EASTBOUND DIRECTION

TIME OF DAY	FLOWS AND CAPACITY IN VEH/HR							AVERAGE SPEEDS IN MPH		
	MAIN ROUTE		SITE CAPA CITY	FLOW		AV.DEL PER VEH (MINS)	AVERAGE QUEUE (VEH)	MAIN ROUTE		SITE
	DEMAND FLOW	PCT HEAVY		MAIN ROUTE	'DIVER TED'			WITHOUT WORK ZONE	WITH WORK ZONE	
MID-1 AM	43	0.0	1500	43	0	0.50	0	63.8	56.3	41.9
1-2 AM	27	0.0	1500	27	0	0.50	0	63.8	56.3	41.9
2-3 AM	23	0.0	1500	23	0	0.50	0	63.8	56.3	41.9
3-4 AM	45	0.0	1500	45	0	0.50	0	63.8	56.3	41.9
4-5 AM	64	0.0	1500	64	0	0.50	0	63.8	56.3	41.8
5-6 AM	109	0.0	1500	109	0	0.51	0	63.7	56.1	41.6
6-7 AM	170	0.0	1500	170	0	0.51	0	63.6	56.0	41.4
7-8 AM	233	0.0	1500	233	0	0.52	0	63.5	55.8	41.2
8-9 AM	271	0.0	1500	271	0	0.52	0	63.4	55.7	41.0
9-10 AM	329	0.0	1500	329	0	0.53	0	63.3	55.5	40.9
10-11 AM	391	0.0	1500	391	0	0.54	0	63.2	55.4	40.7
11AM-NOON	411	0.0	1500	411	0	0.54	0	63.2	55.3	40.6
NOON-1PM	483	0.0	1500	483	0	0.54	0	63.0	55.1	40.4
1-2 PM	484	0.0	1500	484	0	0.54	0	63.0	55.1	40.4
2-3 PM	516	0.0	1500	516	0	0.55	0	63.0	55.0	40.2
3-4 PM	558	0.0	1500	558	0	0.55	0	62.8	54.9	40.1
4-5 PM	587	0.0	1500	587	0	0.55	0	62.8	54.8	40.0
5-6 PM	573	0.0	1500	573	0	0.55	0	62.8	54.9	40.1
6-7 PM	420	0.0	1500	420	0	0.54	0	63.1	55.3	40.6
7-8 PM	305	0.0	1500	305	0	0.53	0	63.3	55.6	40.9
8-9 PM	232	0.0	1500	232	0	0.52	0	63.5	55.8	41.2
9-10 PM	184	0.0	1500	184	0	0.52	0	63.5	55.9	41.4
10-11 PM	126	0.0	1500	126	0	0.51	0	63.7	56.1	41.5
11PM-MID	82	0.0	1500	82	0	0.51	0	63.8	56.2	41.7

*----- SITE BREAKDOWN DELAYS -----*	
BREAKDOWN DURATION (MINS)	0
RANGE OF QUEUE DELAY - MIN (VEH-H) MAX	0.0
AV BREAKDOWNS PER DAY	0.00
AV QUEUE DELAY/DAY (VEH-H)	0.0
AV TOTAL DELAY/DAY (VEH-H)	0.0

*----- SITE ACCIDENT DELAYS -----*	
BREAKDOWN DURATION (MINS)	0
RANGE OF QUEUE DELAY - MIN (VEH-H) MAX	0
AV BREAKDOWNS PER DAY	0
AV QUEUE DELAY/DAY (VEH-H)	0
AV TOTAL DELAY/DAY (VEH-H)	0

AVERAGE ACCIDENT NUMBERS (PIA/DAY)	
MAIN ROUTE WITHOUT WORKS	0.0044
MAIN ROUTE WITH WORKS	0.0051
'DIVERSION'	0.0000

PIA: Personal Injury Accidents

ECONOMIC IMPACT ON ROAD USERS	
ROAD USER COSTS PER DAY	\$751
CONGESTED HOURS PER DAY*	0

\*Delays Exceeding User-Specified Maximum

**USH 10: CTH K TO CTH B (PORTAGE COUNTY)  
CONTINUOUS (24 HOUR) CLOSURE  
NO DIVERSION ROUTE (MAX QUEUE METHOD)**

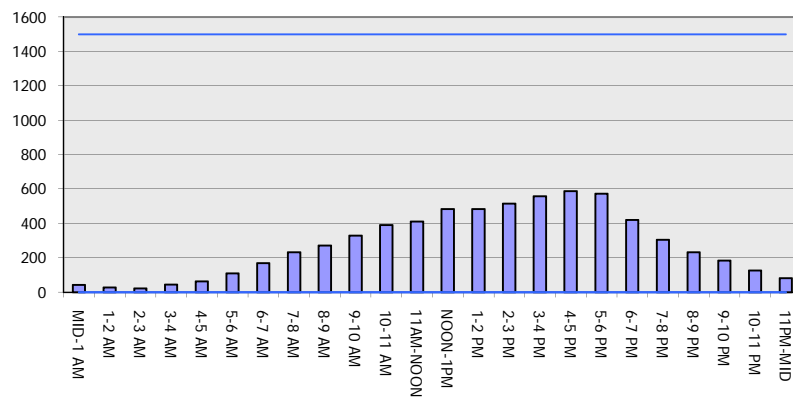
**AUGUST**

Analyzed for 2009  
Construction Season

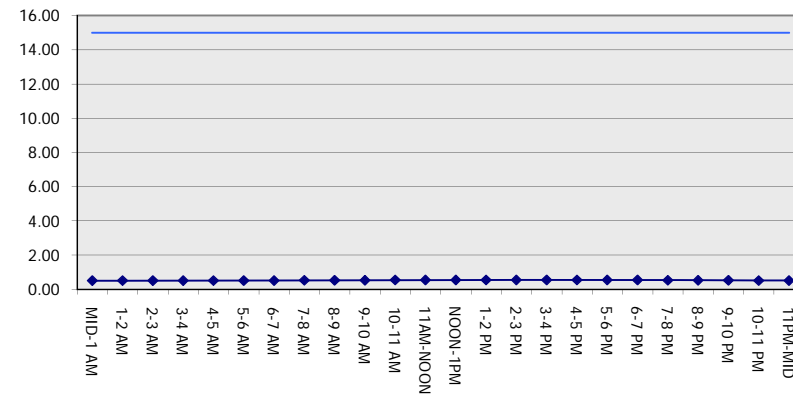
**GRAPHICAL REPRESENTATION OF TRAFFIC MODEL INPUT AND OUTPUT**

**FRIDAY EASTBOUND DIRECTION**

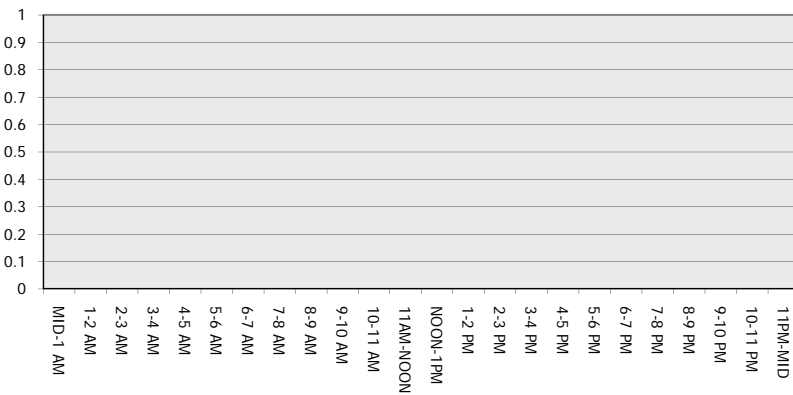
**Main Route - Traffic Demand (Vehicles Per Hour)**



**Main Route Average Delay Per Vehicle (Minutes)**



**Main Route - Average Queue Length (Vehicles)**



**Main Route - Average Speed (MPH)**

