

STH 29: IH 93 TO CTH X (MARATHON COUNTY) CONTINUOUS (24 HOUR) CLOSURE DIVERSION ROUTE: BUS 51, IH 39	AUGUST
	Analyzed for 2009 Construction Season

SUMMARY OF TRAFFIC MODEL OUTPUT

SUNDAY WESTBOUND DIRECTION

TIME OF DAY	FLOWS AND CAPACITY IN VEH/HR						AVERAGE SPEEDS IN MPH								
	MAIN ROUTE		ALTERNATE ROUTE		SITE CAPA CITY	FLOW MAIN ROUTE	FLOW DIVER -TING	TOTAL DIVN FLOW	AV.DEL PER VEH (MINS)	AVERAGE QUEUE (VEH)	MAIN ROUTE		ALTERNATE ROUTE		
	DEMAND FLOW	PCT HEAVY	NORMAL FLOW	PCT HEAVY							WITHOUT WORK ZN	WITH WORK ZN	SITE	WITHOUT WORK ZN	WITH WORK ZN
MID-1 AM	282	0.0	147	0.0	1500	282	0	147	0.45	0	65.9	47.7	44.3	38.2	38.2
1-2 AM	126	0.0	66	0.0	1500	126	0	66	0.43	0	66.1	48.3	45.0	38.4	38.4
2-3 AM	97	0.0	50	0.0	1500	97	0	50	0.43	0	66.2	48.4	45.1	38.4	38.4
3-4 AM	54	0.0	28	0.0	1500	54	0	28	0.43	0	66.3	48.6	45.3	38.4	38.4
4-5 AM	73	0.0	38	0.0	1500	73	0	38	0.43	0	66.3	48.5	45.2	38.4	38.4
5-6 AM	114	0.0	60	0.0	1500	114	0	60	0.43	0	66.2	48.4	45.0	38.4	38.4
6-7 AM	206	0.0	108	0.0	1500	206	0	108	0.44	0	66.0	48.0	44.6	38.3	38.3
7-8 AM	310	0.0	162	0.0	1500	310	0	162	0.45	0	65.8	47.6	44.2	38.2	38.2
8-9 AM	517	0.0	271	0.0	1500	517	0	271	0.47	0	65.4	46.8	43.5	37.9	37.9
9-10 AM	791	0.0	413	0.0	1500	791	0	413	0.50	0	64.9	45.8	42.4	37.6	37.6
10-11 AM	1020	0.0	533	0.0	1500	1020	0	533	0.52	0	64.5	45.0	41.6	37.4	37.4
11A-NOON	1245	0.0	652	0.0	1500	1245	0	652	0.70	0	64.1	40.7	37.1	37.1	37.1
NOON-1PM	1289	0.0	674	0.0	1500	1289	0	674	0.75	0	64.0	39.6	35.8	37.1	37.1
1-2 PM	1301	0.0	680	0.0	1500	1301	0	680	0.77	0	64.0	39.2	35.5	37.1	37.1
2-3 PM	1260	0.0	659	0.0	1500	1260	0	659	0.71	0	64.0	40.4	36.6	37.1	37.1
3-4 PM	1156	0.0	604	0.0	1500	1156	0	604	0.58	0	64.2	43.5	39.9	37.3	37.3
4-5 PM	1065	0.0	557	0.0	1500	1065	0	557	0.53	0	64.4	44.9	41.4	37.3	37.3
5-6 PM	918	0.0	480	0.0	1500	918	0	480	0.51	0	64.6	45.4	42.0	37.5	37.5
6-7 PM	750	0.0	392	0.0	1500	750	0	392	0.50	0	65.0	46.0	42.6	37.7	37.7
7-8 PM	619	0.0	323	0.0	1500	619	0	323	0.48	0	65.2	46.5	43.0	37.8	37.8
8-9 PM	460	0.0	241	0.0	1500	460	0	241	0.47	0	65.5	47.0	43.7	38.0	38.0
9-10 PM	353	0.0	184	0.0	1500	353	0	184	0.46	0	65.7	47.4	44.1	38.1	38.1
10-11 PM	238	0.0	125	0.0	1500	238	0	125	0.45	0	66.0	47.9	44.5	38.3	38.3
11PM-MID	139	0.0	73	0.0	1500	139	0	73	0.44	0	66.1	48.3	45.0	38.4	38.4

----- SITE BREAKDOWN DELAYS -----	
BREAKDOWN DURATION (MINS)	0
RANGE OF QUEUE DELAY - MIN (VEH-H) MAX	0.0
RANGE OF DIVN DELAY - MIN (VEH-H) MAX	0.0
AV BREAKDOWNS PER DAY	0.00
AV QUEUE DELAY/DAY (VEH-H)	0.0
AV DIVN DELAY/DAY (VEH-H)	0.0
AV TOTAL DELAY/DAY (VEH-H)	0.0

----- SITE ACCIDENT DELAYS -----	
ACCIDENT DURATION (MINS)	0
RANGE OF QUEUE DELAY - MIN (VEH-H) MAX	0.0
RANGE OF DIVN DELAY - MIN (VEH-H) MAX	0.0
AV ACCIDENTS PER DAY	0.00
AV QUEUE DELAY/DAY (VEH-H)	0.0
AV DIVN DELAY/DAY (VEH-H)	0.0
AV TOTAL DELAY/DAY (VEH-H)	0.0

AVERAGE ACCIDENT NUMBERS (PIA/DAY)	
MAIN ROUTE WITHOUT WORKS	0.0030
MAIN ROUTE WITH WORKS	0.0020
DIVERSION	0.0662

PIA: Personal Injury Accidents

IMPACTS ON ROAD USERS	
ROAD USER COSTS PER DAY (DOLLARS)	\$2,182
CONGESTED HOURS PER DAY*	0

*Delays Exceeding 15 Minutes

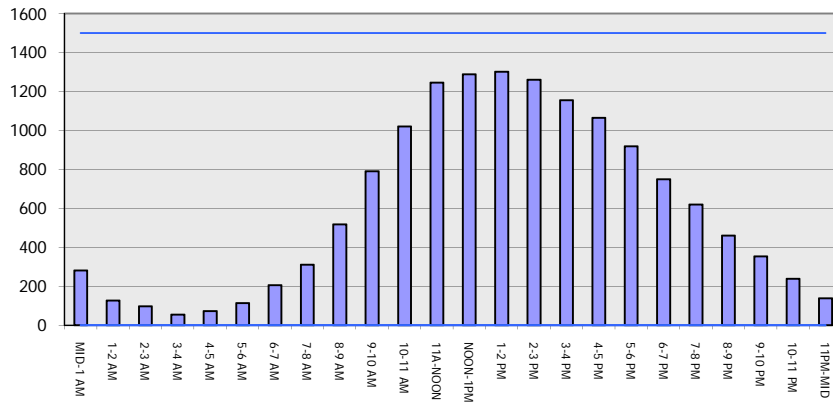
**STH 29: IH 93 TO CTH X (MARATHON COUNTY)
CONTINUOUS (24 HOUR) CLOSURE
DIVERSION ROUTE: BUS 51, IH 39**

AUGUST
Analyzed for 2009
Construction Season

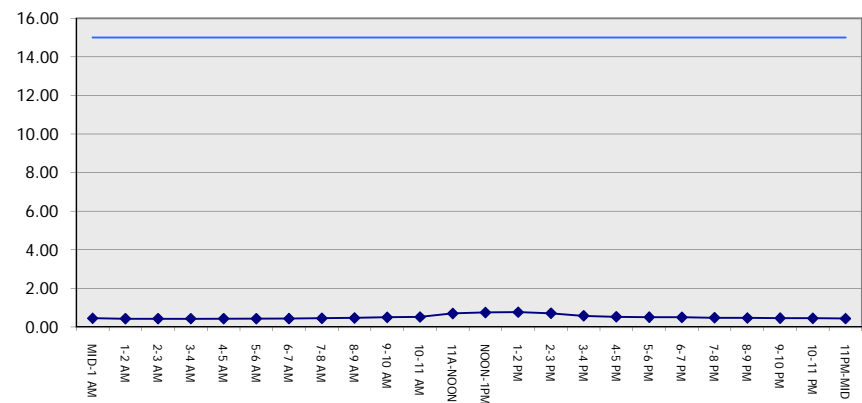
GRAPHICAL REPRESENTATION OF TRAFFIC MODEL INPUT AND OUTPUT

SUNDAY WESTBOUND DIRECTION

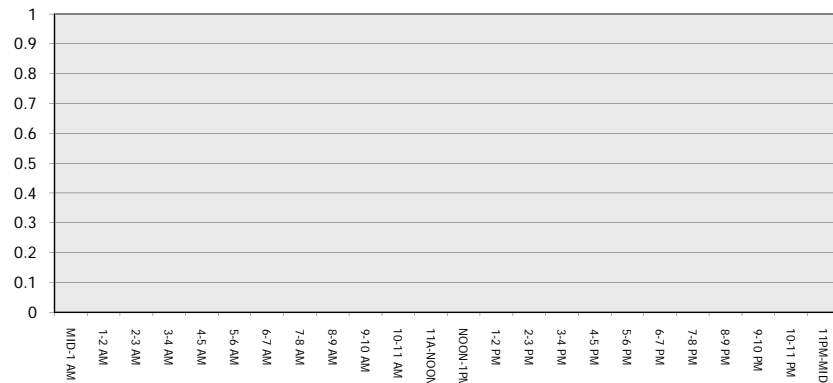
Main Route - Traffic Demand (Vehicles Per Hour)



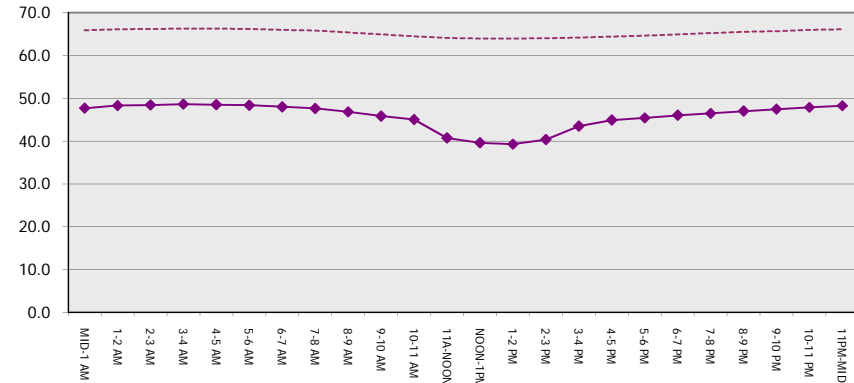
Main Route Average Delay Per Vehicle (Minutes)



Main Route - Average Queue Length (Vehicles)



Main Route - Average Speed (MPH)



STH 29: IH 93 TO CTH X (MARATHON COUNTY) CONTINUOUS (24 HOUR) CLOSURE DIVERSION ROUTE: BUS 51, IH 39	AUGUST
	Analyzed for 2009 Construction Season

SUMMARY OF TRAFFIC MODEL OUTPUT

SUNDAY EASTBOUND DIRECTION

TIME OF DAY	FLOWS AND CAPACITY IN VEH/HR								AVERAGE SPEEDS IN MPH						
	MAIN		DIVERSION		SITE CAPA CITY	FLOW MAIN ROUTE	FLOW DIVER -TING	TOTAL DIVN FLOW	AV.DEL PER VEH (MINS)	AVERAGE QUEUE (VEH)	MAIN ROUTE		SITE	ALTERNATE ROUTE	
	DEMAND FLOW	PCT HEAVY	NORMAL FLOW	PCT HEAVY							WITHOUT WORK ZN	WITH WORK ZN		WITHOUT WORK ZN	WITH WORK ZN
MID-1 AM	169	0.0	88	0.0	1500	169	0	88	0.44	0	66.1	48.1	44.8	38.1	38.1
1-2 AM	96	0.0	50	0.0	1500	96	0	50	0.43	0	66.2	48.4	45.1	38.3	38.3
2-3 AM	64	0.0	33	0.0	1500	64	0	33	0.43	0	66.3	48.6	45.2	38.4	38.4
3-4 AM	51	0.0	27	0.0	1500	51	0	27	0.43	0	66.3	48.6	45.3	38.4	38.4
4-5 AM	50	0.0	27	0.0	1500	50	0	27	0.43	0	66.3	48.6	45.3	38.4	38.4
5-6 AM	74	0.0	39	0.0	1500	74	0	39	0.43	0	66.3	48.5	45.2	38.3	38.3
6-7 AM	127	0.0	66	0.0	1500	127	0	66	0.43	0	66.1	48.3	45.0	38.3	38.3
7-8 AM	210	0.0	109	0.0	1500	210	0	109	0.44	0	66.0	48.0	44.6	38.1	38.1
8-9 AM	330	0.0	173	0.0	1500	330	0	173	0.45	0	65.8	47.5	44.2	37.8	37.8
9-10 AM	538	0.0	281	0.0	1500	538	0	281	0.47	0	65.4	46.8	43.3	37.3	37.3
10-11 AM	767	0.0	400	0.0	1500	767	0	400	0.50	0	65.0	46.0	42.5	36.8	36.8
11A-NOON	999	0.0	523	0.0	1500	999	0	523	0.52	0	64.5	45.1	41.7	35.3	35.3
NOON-1PM	1171	0.0	613	0.0	1500	1171	0	613	0.60	0	64.2	43.0	39.4	33.7	33.7
1-2 PM	1220	0.0	637	0.0	1500	1220	0	637	0.66	0	64.1	41.5	37.8	33.3	33.3
2-3 PM	1252	0.0	655	0.0	1500	1252	0	655	0.70	0	64.0	40.6	36.9	33.0	33.0
3-4 PM	1279	0.0	669	0.0	1500	1279	0	669	0.74	0	64.0	39.8	36.1	32.7	32.7
4-5 PM	1234	0.0	645	0.0	1500	1234	0	645	0.68	0	64.1	41.0	37.4	33.2	33.2
5-6 PM	1064	0.0	557	0.0	1500	1064	0	557	0.53	0	64.4	44.9	41.5	34.7	34.7
6-7 PM	925	0.0	484	0.0	1500	925	0	484	0.51	0	64.6	45.4	41.9	36.0	36.0
7-8 PM	797	0.0	417	0.0	1500	797	0	417	0.50	0	64.9	45.8	42.4	36.8	36.8
8-9 PM	623	0.0	325	0.0	1500	623	0	325	0.48	0	65.2	46.5	43.0	37.1	37.1
9-10 PM	400	0.0	209	0.0	1500	400	0	209	0.46	0	65.6	47.3	43.9	37.6	37.6
10-11 PM	307	0.0	161	0.0	1500	307	0	161	0.45	0	65.8	47.6	44.3	37.8	37.8
11PM-MID	125	0.0	65	0.0	1500	125	0	65	0.43	0	66.1	48.3	45.0	38.3	38.3

----- SITE BREAKDOWN DELAYS -----	
BREAKDOWN DURATION (MINS)	0
RANGE OF QUEUE DELAY - MIN	0.0
(VEH-H) MAX	0.0
RANGE OF DIVN DELAY - MIN	0.0
(VEH-H) MAX	0.0
AV BREAKDOWNS PER DAY	0.00
AV QUEUE DELAY/DAY (VEH-H)	0.0
AV DIVN DELAY/DAY (VEH-H)	0.0
AV TOTAL DELAY/DAY (VEH-H)	0.0

----- SITE ACCIDENT DELAYS -----	
ACCIDENT DURATION (MINS)	0
RANGE OF QUEUE DELAY - MIN	0.0
(VEH-H) MAX	0.0
RANGE OF DIVN DELAY - MIN	0.0
(VEH-H) MAX	0.0
AV ACCIDENTS PER DAY	0.00
AV QUEUE DELAY/DAY (VEH-H)	0.0
AV DIVN DELAY/DAY (VEH-H)	0.0
AV TOTAL DELAY/DAY (VEH-H)	0.0

AVERAGE ACCIDENT NUMBERS (PIA/DAY)	
MAIN ROUTE WITHOUT WORKS	0.0029
MAIN ROUTE WITH WORKS	0.0020
DIVERSION	0.0639

PIA: Personal Injury Accidents

IMPACTS ON ROAD USERS	
ROAD USER COSTS PER DAY (DOLLARS)	\$2,070
CONGESTED HOURS PER DAY*	0

*Delays Exceeding 15 Minutes

**STH 29: IH 93 TO CTH X (MARATHON COUNTY)
 CONTINUOUS (24 HOUR) CLOSURE
 DIVERSION ROUTE: BUS 51, IH 39**

AUGUST
 Analyzed for 2009
 Construction Season

GRAPHICAL REPRESENTATION OF TRAFFIC MODEL INPUT AND OUTPUT
SUNDAY EASTBOUND DIRECTION

