

<b>STH 29: IH 93 TO CTH X (MARATHON COUNTY)</b> <b>CONTINUOUS (24 HOUR) CLOSURE</b> <b>DIVERSION ROUTE: BUS 51, IH 39</b>	<b>AUGUST</b>
	Analyzed for 2009 Construction Season

**SUMMARY OF TRAFFIC MODEL OUTPUT**

**SATURDAY WESTBOUND DIRECTION**

TIME OF DAY	FLOWS AND CAPACITY IN VEH/HR						AVERAGE SPEEDS IN MPH								
	MAIN ROUTE		ALTERNATE ROUTE		SITE CAPA CITY	FLOW MAIN ROUTE	FLOW DIVER -TING	TOTAL DIVN FLOW	AV.DEL PER VEH (MINS)	AVERAGE QUEUE (VEH)	MAIN ROUTE		ALTERNATE ROUTE		
	DEMAND FLOW	PCT HEAVY	NORMAL FLOW	PCT HEAVY							WITHOUT WORK ZN	WITH WORK ZN	SITE	WITHOUT WORK ZN	WITH WORK ZN
MID-1 AM	151	0.0	79	0.0	1500	151	0	79	0.44	0	66.1	48.2	44.9	38.3	38.3
1-2 AM	101	0.0	53	0.0	1500	101	0	53	0.43	0	66.2	48.4	45.1	38.4	38.4
2-3 AM	95	0.0	49	0.0	1500	95	0	49	0.43	0	66.2	48.4	45.1	38.4	38.4
3-4 AM	76	0.0	40	0.0	1500	76	0	40	0.43	0	66.3	48.5	45.2	38.4	38.4
4-5 AM	111	0.0	58	0.0	1500	111	0	58	0.43	0	66.2	48.4	45.0	38.4	38.4
5-6 AM	231	0.0	120	0.0	1500	231	0	120	0.44	0	66.0	47.9	44.6	38.3	38.3
6-7 AM	399	0.0	209	0.0	1500	399	0	209	0.46	0	65.6	47.3	43.9	38.1	38.1
7-8 AM	568	0.0	296	0.0	1500	568	0	296	0.48	0	65.3	46.6	43.2	37.9	37.9
8-9 AM	769	0.0	403	0.0	1500	769	0	403	0.50	0	65.0	45.9	42.5	37.6	37.6
9-10 AM	1018	0.0	532	0.0	1500	1018	0	532	0.52	0	64.5	45.1	41.6	37.4	37.4
10-11 AM	1179	0.0	617	0.0	1500	1179	0	617	0.61	0	64.2	42.7	39.1	37.2	37.2
11A-NOON	1234	0.0	645	0.0	1500	1234	0	645	0.68	0	64.1	41.0	37.4	37.1	37.1
NOON-1PM	1180	0.0	617	0.0	1500	1180	0	617	0.61	0	64.2	42.7	39.1	37.2	37.2
1-2 PM	1111	0.0	581	0.0	1500	1111	0	581	0.53	0	64.3	44.7	41.3	37.3	37.3
2-3 PM	1016	0.0	531	0.0	1500	1016	0	531	0.52	0	64.5	45.1	41.6	37.4	37.4
3-4 PM	1025	0.0	536	0.0	1500	1025	0	536	0.52	0	64.5	45.0	41.6	37.4	37.4
4-5 PM	923	0.0	483	0.0	1500	923	0	483	0.51	0	64.6	45.4	41.9	37.5	37.5
5-6 PM	823	0.0	430	0.0	1500	823	0	430	0.50	0	64.8	45.7	42.3	37.6	37.6
6-7 PM	732	0.0	383	0.0	1500	732	0	383	0.49	0	65.0	46.1	42.7	37.7	37.7
7-8 PM	564	0.0	295	0.0	1500	564	0	295	0.48	0	65.3	46.6	43.3	37.9	37.9
8-9 PM	452	0.0	236	0.0	1500	452	0	236	0.47	0	65.5	47.1	43.7	38.0	38.0
9-10 PM	368	0.0	193	0.0	1500	368	0	193	0.46	0	65.7	47.4	44.0	38.1	38.1
10-11 PM	311	0.0	163	0.0	1500	311	0	163	0.45	0	65.8	47.6	44.2	38.2	38.2
11PM-MID	329	0.0	172	0.0	1500	329	0	172	0.45	0	65.8	47.5	44.2	38.1	38.1

*----- SITE BREAKDOWN DELAYS -----*	
BREAKDOWN DURATION (MINS)	0
RANGE OF QUEUE DELAY - MIN	0.0
(VEH-H) MAX	0.0
RANGE OF DIVN DELAY - MIN	0.0
(VEH-H) MAX	0.0
AV BREAKDOWNS PER DAY	0.00
AV QUEUE DELAY/DAY (VEH-H)	0.0
AV DIVN DELAY/DAY (VEH-H)	0.0
AV TOTAL DELAY/DAY (VEH-H)	0.0

*----- SITE ACCIDENT DELAYS -----*	
ACCIDENT DURATION (MINS)	0
RANGE OF QUEUE DELAY - MIN	0.0
(VEH-H) MAX	0.0
RANGE OF DIVN DELAY - MIN	0.0
(VEH-H) MAX	0.0
AV ACCIDENTS PER DAY	0.00
AV QUEUE DELAY/DAY (VEH-H)	0.0
AV DIVN DELAY/DAY (VEH-H)	0.0
AV TOTAL DELAY/DAY (VEH-H)	0.0

AVERAGE ACCIDENT NUMBERS (PIA/DAY)	
MAIN ROUTE WITHOUT WORKS	0.0031
MAIN ROUTE WITH WORKS	0.0021
DIVERSION	0.0680

PIA: Personal Injury Accidents

IMPACTS ON ROAD USERS	
ROAD USER COSTS PER DAY ( DOLLARS)	\$1,996
CONGESTED HOURS PER DAY*	0

\*Delays Exceeding 15 Minutes

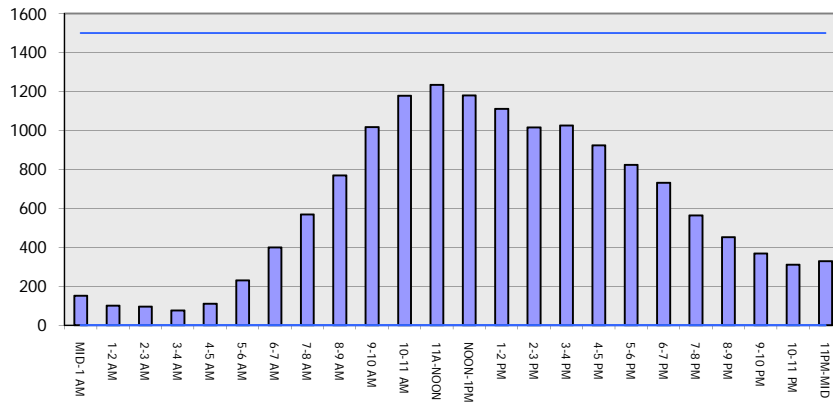
**STH 29: IH 93 TO CTH X (MARATHON COUNTY)**  
**CONTINUOUS (24 HOUR) CLOSURE**  
**DIVERSION ROUTE: BUS 51, IH 39**

**AUGUST**  
 Analyzed for 2009  
 Construction Season

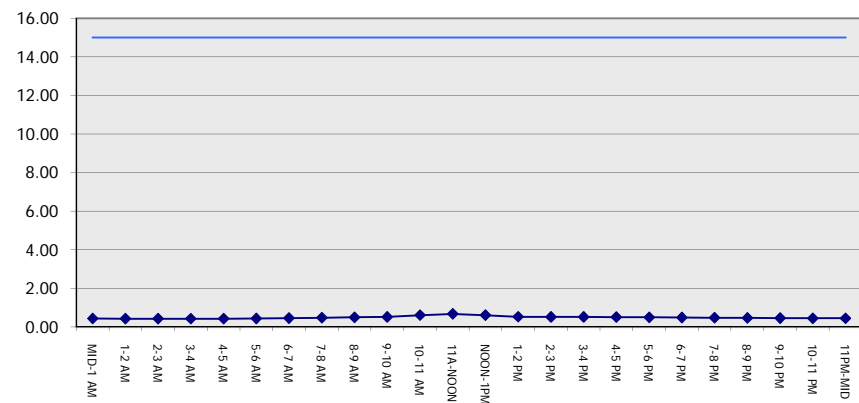
**GRAPHICAL REPRESENTATION OF TRAFFIC MODEL INPUT AND OUTPUT**

**SATURDAY WESTBOUND DIRECTION**

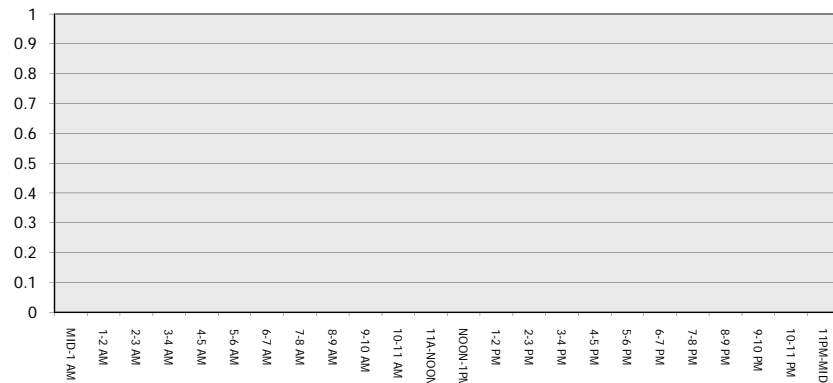
**Main Route - Traffic Demand (Vehicles Per Hour)**



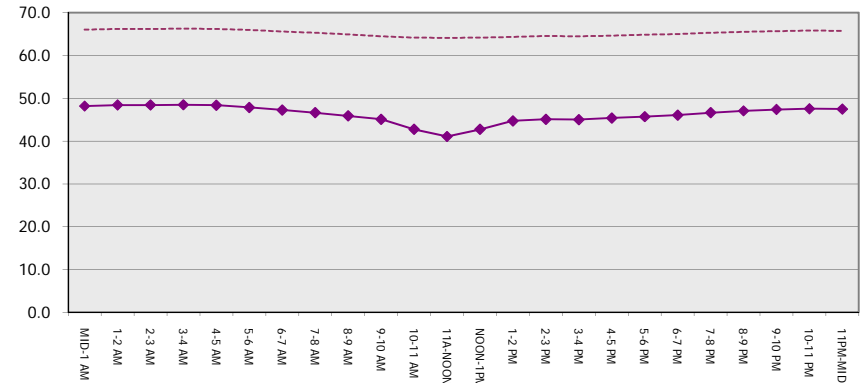
**Main Route Average Delay Per Vehicle (Minutes)**



**Main Route - Average Queue Length (Vehicles)**



**Main Route - Average Speed (MPH)**



<b>STH 29: IH 93 TO CTH X (MARATHON COUNTY)</b> <b>CONTINUOUS (24 HOUR) CLOSURE</b> <b>DIVERSION ROUTE: BUS 51, IH 39</b>	<b>AUGUST</b>
	Analyzed for 2009 Construction Season

**SUMMARY OF TRAFFIC MODEL OUTPUT**

SATURDAY EASTBOUND DIRECTION

TIME OF DAY	FLOWS AND CAPACITY IN VEH/HR								AVERAGE SPEEDS IN MPH						
	MAIN		DIVERSION		SITE CAPA CITY	FLOW MAIN ROUTE	FLOW DIVER -TING	TOTAL DIVN FLOW	AV.DEL PER VEH (MINS)	AVERAGE QUEUE (VEH)	MAIN ROUTE		SITE	ALTERNATE ROUTE	
	DEMAND FLOW	PCT HEAVY	NORMAL FLOW	PCT HEAVY							WITHOUT WORK ZN	WITH WORK ZN		WITHOUT WORK ZN	WITH WORK ZN
MID-1 AM	173	0.0	91	0.0	1500	173	0	91	0.44	0	66.1	48.1	44.8	38.1	38.1
1-2 AM	110	0.0	58	0.0	1500	110	0	58	0.43	0	66.2	48.4	45.0	38.3	38.3
2-3 AM	78	0.0	41	0.0	1500	78	0	41	0.43	0	66.3	48.5	45.2	38.3	38.3
3-4 AM	68	0.0	35	0.0	1500	68	0	35	0.43	0	66.3	48.6	45.2	38.4	38.4
4-5 AM	102	0.0	54	0.0	1500	102	0	54	0.43	0	66.2	48.4	45.1	38.3	38.3
5-6 AM	113	0.0	59	0.0	1500	113	0	59	0.43	0	66.2	48.4	45.0	38.3	38.3
6-7 AM	230	0.0	119	0.0	1500	230	0	119	0.44	0	66.0	47.9	44.6	38.0	38.0
7-8 AM	349	0.0	182	0.0	1500	349	0	182	0.46	0	65.8	47.4	44.1	37.8	37.8
8-9 AM	577	0.0	302	0.0	1500	577	0	302	0.48	0	65.3	46.6	43.2	37.3	37.3
9-10 AM	725	0.0	379	0.0	1500	725	0	379	0.49	0	65.0	46.1	42.7	36.9	36.9
10-11 AM	972	0.0	508	0.0	1500	972	0	508	0.52	0	64.6	45.2	41.8	35.5	35.5
11A-NOON	1108	0.0	580	0.0	1500	1108	0	580	0.53	0	64.3	44.8	41.3	34.3	34.3
NOON-1PM	1237	0.0	646	0.0	1500	1237	0	646	0.68	0	64.1	41.0	37.3	33.1	33.1
1-2 PM	1190	0.0	623	0.0	1500	1190	0	623	0.62	0	64.1	42.4	38.8	33.5	33.5
2-3 PM	1164	0.0	608	0.0	1500	1164	0	608	0.59	0	64.2	43.2	39.6	33.8	33.8
3-4 PM	1123	0.0	587	0.0	1500	1123	0	587	0.54	0	64.3	44.5	41.1	34.2	34.2
4-5 PM	1003	0.0	524	0.0	1500	1003	0	524	0.52	0	64.5	45.1	41.7	35.3	35.3
5-6 PM	921	0.0	482	0.0	1500	921	0	482	0.51	0	64.6	45.4	42.0	36.0	36.0
6-7 PM	754	0.0	394	0.0	1500	754	0	394	0.50	0	65.0	46.0	42.5	36.8	36.8
7-8 PM	648	0.0	340	0.0	1500	648	0	340	0.49	0	65.2	46.3	43.0	37.1	37.1
8-9 PM	606	0.0	317	0.0	1500	606	0	317	0.48	0	65.3	46.5	43.1	37.2	37.2
9-10 PM	541	0.0	283	0.0	1500	541	0	283	0.47	0	65.4	46.8	43.3	37.3	37.3
10-11 PM	387	0.0	202	0.0	1500	387	0	202	0.46	0	65.6	47.3	44.0	37.6	37.6
11PM-MID	272	0.0	142	0.0	1500	272	0	142	0.45	0	65.9	47.8	44.4	37.9	37.9

*----- SITE BREAKDOWN DELAYS -----*	
BREAKDOWN DURATION (MINS)	0
RANGE OF QUEUE DELAY - MIN	0.0
(VEH-H) MAX	0.0
RANGE OF DIVN DELAY - MIN	0.0
(VEH-H) MAX	0.0
AV BREAKDOWNS PER DAY	0.00
AV QUEUE DELAY/DAY (VEH-H)	0.0
AV DIVN DELAY/DAY (VEH-H)	0.0
AV TOTAL DELAY/DAY (VEH-H)	0.0

*----- SITE ACCIDENT DELAYS -----*	
ACCIDENT DURATION (MINS)	0
RANGE OF QUEUE DELAY - MIN	0.0
(VEH-H) MAX	0.0
RANGE OF DIVN DELAY - MIN	0.0
(VEH-H) MAX	0.0
AV ACCIDENTS PER DAY	0.00
AV QUEUE DELAY/DAY (VEH-H)	0.0
AV DIVN DELAY/DAY (VEH-H)	0.0
AV TOTAL DELAY/DAY (VEH-H)	0.0

AVERAGE ACCIDENT NUMBERS (PIA/DAY)	
MAIN ROUTE WITHOUT WORKS	0.0030
MAIN ROUTE WITH WORKS	0.0020
DIVERSION	0.0665

PIA: Personal Injury Accidents

IMPACTS ON ROAD USERS	
ROAD USER COSTS PER DAY ( DOLLARS)	\$1,959
CONGESTED HOURS PER DAY*	0

\*Delays Exceeding 15 Minutes

**STH 29: IH 93 TO CTH X (MARATHON COUNTY)  
CONTINUOUS (24 HOUR) CLOSURE  
DIVERSION ROUTE: BUS 51, IH 39**

**AUGUST**  
Analyzed for 2009  
Construction Season

**GRAPHICAL REPRESENTATION OF TRAFFIC MODEL INPUT AND OUTPUT**  
**SATURDAY EASTBOUND DIRECTION**

