

<b>STH 29: IH 93 TO CTH X (MARATHON COUNTY)</b> <b>CONTINUOUS (24 HOUR) CLOSURE</b> <b>DIVERSION ROUTE: BUS 51, IH 39</b>	<b>MAY</b>
	Analyzed for 2009 Construction Season

**SUMMARY OF TRAFFIC MODEL OUTPUT**

**SUNDAY WESTBOUND DIRECTION**

TIME OF DAY	FLOWS AND CAPACITY IN VEH/HR						AVERAGE SPEEDS IN MPH								
	MAIN ROUTE		ALTERNATE ROUTE		SITE CAPA CITY	FLOW MAIN ROUTE	FLOW DIVER -TING	TOTAL DIVN FLOW	AV.DEL PER VEH (MINS)	AVERAGE QUEUE (VEH)	MAIN ROUTE		ALTERNATE ROUTE		
	DEMAND FLOW	PCT HEAVY	NORMAL FLOW	PCT HEAVY							WITHOUT WORK ZN	WITH WORK ZN	SITE	WITHOUT WORK ZN	WITH WORK ZN
MID-1 AM	121	0.0	63	0.0	1500	121	0	63	0.43	0	66.1	48.3	45.0	38.4	38.4
1-2 AM	83	0.0	43	0.0	1500	83	0	43	0.43	0	66.2	48.5	45.1	38.4	38.4
2-3 AM	81	0.0	42	0.0	1500	81	0	42	0.43	0	66.3	48.5	45.1	38.4	38.4
3-4 AM	57	0.0	30	0.0	1500	57	0	30	0.43	0	66.3	48.6	45.3	38.4	38.4
4-5 AM	71	0.0	37	0.0	1500	71	0	37	0.43	0	66.3	48.5	45.2	38.4	38.4
5-6 AM	119	0.0	62	0.0	1500	119	0	62	0.43	0	66.1	48.3	45.0	38.4	38.4
6-7 AM	196	0.0	102	0.0	1500	196	0	102	0.44	0	66.0	48.1	44.7	38.3	38.3
7-8 AM	313	0.0	164	0.0	1500	313	0	164	0.45	0	65.8	47.6	44.2	38.1	38.1
8-9 AM	532	0.0	278	0.0	1500	532	0	278	0.47	0	65.4	46.8	43.4	37.9	37.9
9-10 AM	784	0.0	411	0.0	1500	784	0	411	0.50	0	64.9	45.9	42.5	37.6	37.6
10-11 AM	906	0.0	474	0.0	1500	906	0	474	0.51	0	64.7	45.5	42.0	37.5	37.5
11A-NOON	1039	0.0	544	0.0	1500	1039	0	544	0.52	0	64.5	45.0	41.5	37.4	37.4
NOON-1PM	1057	0.0	553	0.0	1500	1057	0	553	0.52	0	64.4	44.9	41.5	37.3	37.3
1-2 PM	1008	0.0	527	0.0	1500	1008	0	527	0.52	0	64.5	45.1	41.7	37.4	37.4
2-3 PM	1014	0.0	530	0.0	1500	1014	0	530	0.52	0	64.5	45.1	41.6	37.4	37.4
3-4 PM	976	0.0	511	0.0	1500	976	0	511	0.52	0	64.6	45.2	41.8	37.4	37.4
4-5 PM	935	0.0	489	0.0	1500	935	0	489	0.51	0	64.6	45.3	41.9	37.5	37.5
5-6 PM	835	0.0	436	0.0	1500	835	0	436	0.50	0	64.8	45.7	42.3	37.6	37.6
6-7 PM	677	0.0	354	0.0	1500	677	0	354	0.49	0	65.1	46.3	42.8	37.8	37.8
7-8 PM	540	0.0	282	0.0	1500	540	0	282	0.47	0	65.4	46.8	43.3	37.9	37.9
8-9 PM	400	0.0	209	0.0	1500	400	0	209	0.46	0	65.6	47.3	43.9	38.1	38.1
9-10 PM	318	0.0	166	0.0	1500	318	0	166	0.45	0	65.8	47.6	44.2	38.1	38.1
10-11 PM	206	0.0	107	0.0	1500	206	0	107	0.44	0	66.0	48.0	44.6	38.3	38.3
11PM-MID	112	0.0	59	0.0	1500	112	0	59	0.43	0	66.2	48.4	45.0	38.4	38.4

*----- SITE BREAKDOWN DELAYS -----*	
BREAKDOWN DURATION (MINS)	0
RANGE OF QUEUE DELAY - MIN	0.0
(VEH-H) MAX	0.0
RANGE OF DIVN DELAY - MIN	0.0
(VEH-H) MAX	0.0
AV BREAKDOWNS PER DAY	0.00
AV QUEUE DELAY/DAY (VEH-H)	0.0
AV DIVN DELAY/DAY (VEH-H)	0.0
AV TOTAL DELAY/DAY (VEH-H)	0.0

*----- SITE ACCIDENT DELAYS -----*	
ACCIDENT DURATION (MINS)	0
RANGE OF QUEUE DELAY - MIN	0.0
(VEH-H) MAX	0.0
RANGE OF DIVN DELAY - MIN	0.0
(VEH-H) MAX	0.0
AV ACCIDENTS PER DAY	0.00
AV QUEUE DELAY/DAY (VEH-H)	0.0
AV DIVN DELAY/DAY (VEH-H)	0.0
AV TOTAL DELAY/DAY (VEH-H)	0.0

AVERAGE ACCIDENT NUMBERS (PIA/DAY)	
MAIN ROUTE WITHOUT WORKS	0.0026
MAIN ROUTE WITH WORKS	0.0017
DIVERSION	0.0570

PIA: Personal Injury Accidents

IMPACTS ON ROAD USERS	
ROAD USER COSTS PER DAY ( DOLLARS)	\$1,584
CONGESTED HOURS PER DAY*	0

\*Delays Exceeding 15 Minutes

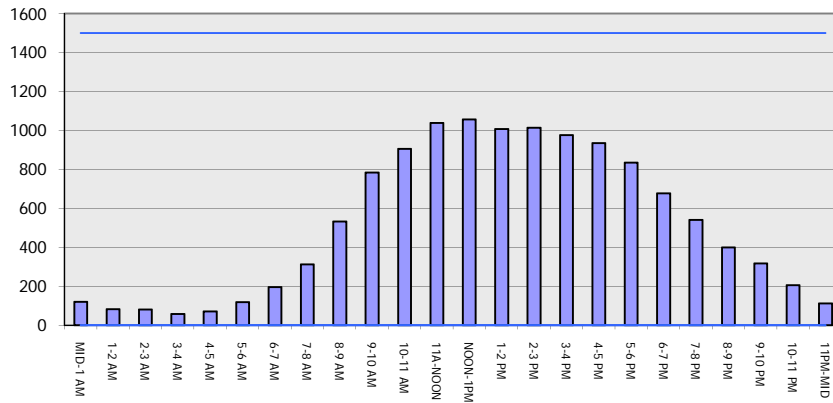
**STH 29: IH 93 TO CTH X (MARATHON COUNTY)  
CONTINUOUS (24 HOUR) CLOSURE  
DIVERSION ROUTE: BUS 51, IH 39**

**MAY**  
Analyzed for 2009  
Construction Season

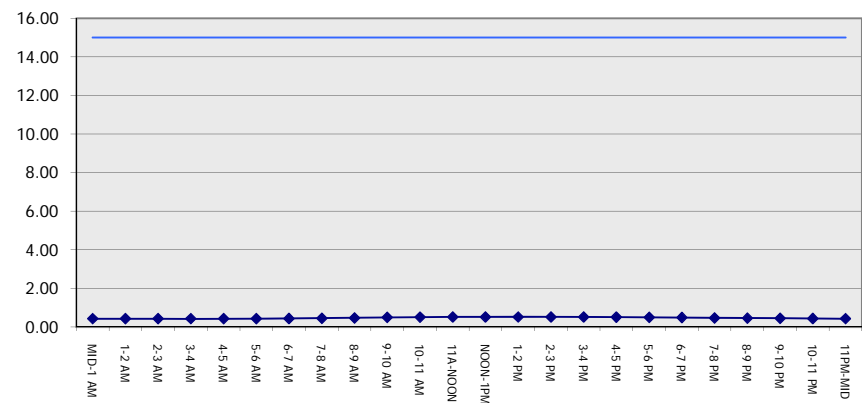
**GRAPHICAL REPRESENTATION OF TRAFFIC MODEL INPUT AND OUTPUT**

**SUNDAY WESTBOUND DIRECTION**

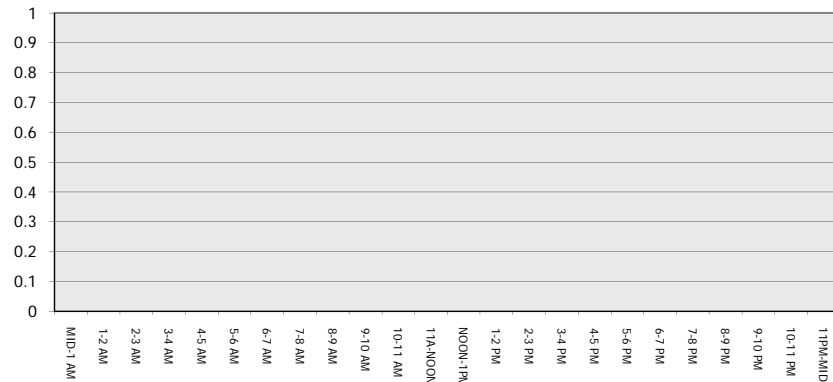
**Main Route - Traffic Demand (Vehicles Per Hour)**



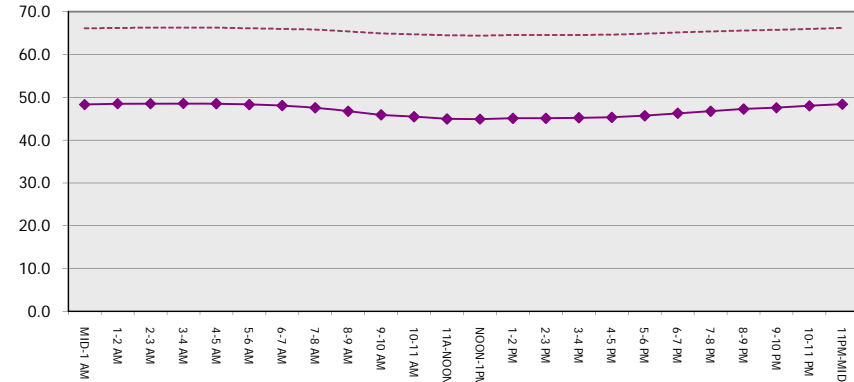
**Main Route Average Delay Per Vehicle (Minutes)**



**Main Route - Average Queue Length (Vehicles)**



**Main Route - Average Speed (MPH)**



<b>STH 29: IH 93 TO CTH X (MARATHON COUNTY)</b> <b>CONTINUOUS (24 HOUR) CLOSURE</b> <b>DIVERSION ROUTE: BUS 51, IH 39</b>	<b>MAY</b>
	Analyzed for 2009 Construction Season

**SUMMARY OF TRAFFIC MODEL OUTPUT**

SUNDAY EASTBOUND DIRECTION

TIME OF DAY	FLOWS AND CAPACITY IN VEH/HR								AVERAGE SPEEDS IN MPH						
	MAIN		DIVERSION		SITE CAPA CITY	FLOW MAIN ROUTE	FLOW DIVER -TING	TOTAL DIVN FLOW	AV.DEL PER VEH (MINS)	AVERAGE QUEUE (VEH)	MAIN ROUTE		SITE	ALTERNATE ROUTE	
	DEMAND FLOW	PCT HEAVY	NORMAL FLOW	PCT HEAVY							WITHOUT WORK ZN	WITH WORK ZN		WITHOUT WORK ZN	WITH WORK ZN
MID-1 AM	109	0.0	57	0.0	1500	109	0	57	0.43	0	66.2	48.4	45.0	38.3	38.3
1-2 AM	66	0.0	34	0.0	1500	66	0	34	0.43	0	66.3	48.6	45.2	38.4	38.4
2-3 AM	59	0.0	31	0.0	1500	59	0	31	0.43	0	66.3	48.6	45.3	38.4	38.4
3-4 AM	42	0.0	22	0.0	1500	42	0	22	0.43	0	66.3	48.6	45.3	38.4	38.4
4-5 AM	43	0.0	23	0.0	1500	43	0	23	0.43	0	66.3	48.6	45.3	38.4	38.4
5-6 AM	69	0.0	36	0.0	1500	69	0	36	0.43	0	66.3	48.6	45.2	38.4	38.4
6-7 AM	156	0.0	82	0.0	1500	156	0	82	0.44	0	66.1	48.2	44.8	38.1	38.1
7-8 AM	231	0.0	120	0.0	1500	231	0	120	0.44	0	66.0	47.9	44.6	38.0	38.0
8-9 AM	347	0.0	181	0.0	1500	347	0	181	0.46	0	65.8	47.4	44.1	37.8	37.8
9-10 AM	577	0.0	302	0.0	1500	577	0	302	0.48	0	65.3	46.6	43.2	37.3	37.3
10-11 AM	755	0.0	395	0.0	1500	755	0	395	0.50	0	65.0	46.0	42.5	36.8	36.8
11A-NOON	973	0.0	509	0.0	1500	973	0	509	0.52	0	64.6	45.2	41.8	35.5	35.5
NOON-1PM	1092	0.0	571	0.0	1500	1092	0	571	0.53	0	64.3	44.8	41.4	34.5	34.5
1-2 PM	1086	0.0	567	0.0	1500	1086	0	567	0.53	0	64.3	44.8	41.4	34.5	34.5
2-3 PM	1139	0.0	596	0.0	1500	1139	0	596	0.56	0	64.3	44.0	40.5	34.0	34.0
3-4 PM	1109	0.0	580	0.0	1500	1109	0	580	0.53	0	64.3	44.8	41.3	34.3	34.3
4-5 PM	1023	0.0	535	0.0	1500	1023	0	535	0.52	0	64.5	45.0	41.6	35.1	35.1
5-6 PM	925	0.0	484	0.0	1500	925	0	484	0.51	0	64.6	45.4	41.9	36.0	36.0
6-7 PM	797	0.0	417	0.0	1500	797	0	417	0.50	0	64.9	45.8	42.4	36.8	36.8
7-8 PM	643	0.0	337	0.0	1500	643	0	337	0.48	0	65.2	46.4	43.0	37.1	37.1
8-9 PM	520	0.0	272	0.0	1500	520	0	272	0.47	0	65.4	46.8	43.4	37.4	37.4
9-10 PM	338	0.0	177	0.0	1500	338	0	177	0.46	0	65.8	47.5	44.2	37.8	37.8
10-11 PM	215	0.0	112	0.0	1500	215	0	112	0.44	0	66.0	47.9	44.6	38.0	38.0
11PM-MID	130	0.0	68	0.0	1500	130	0	68	0.44	0	66.1	48.3	45.0	38.2	38.2

*----- SITE BREAKDOWN DELAYS -----*	
BREAKDOWN DURATION (MINS)	0
RANGE OF QUEUE DELAY - MIN	0.0
(VEH-H) MAX	0.0
RANGE OF DIVN DELAY - MIN	0.0
(VEH-H) MAX	0.0
AV BREAKDOWNS PER DAY	0.00
AV QUEUE DELAY/DAY (VEH-H)	0.0
AV DIVN DELAY/DAY (VEH-H)	0.0
AV TOTAL DELAY/DAY (VEH-H)	0.0

*----- SITE ACCIDENT DELAYS -----*	
ACCIDENT DURATION (MINS)	0
RANGE OF QUEUE DELAY - MIN	0.0
(VEH-H) MAX	0.0
RANGE OF DIVN DELAY - MIN	0.0
(VEH-H) MAX	0.0
AV ACCIDENTS PER DAY	0.00
AV QUEUE DELAY/DAY (VEH-H)	0.0
AV DIVN DELAY/DAY (VEH-H)	0.0
AV TOTAL DELAY/DAY (VEH-H)	0.0

AVERAGE ACCIDENT NUMBERS (PIA/DAY)	
MAIN ROUTE WITHOUT WORKS	0.0026
MAIN ROUTE WITH WORKS	0.0018
DIVERSION	0.0573

PIA: Personal Injury Accidents

IMPACTS ON ROAD USERS	
ROAD USER COSTS PER DAY ( DOLLARS)	\$1,621
CONGESTED HOURS PER DAY*	0

\*Delays Exceeding 15 Minutes

**STH 29: IH 93 TO CTH X (MARATHON COUNTY)  
CONTINUOUS (24 HOUR) CLOSURE  
DIVERSION ROUTE: BUS 51, IH 39**

**MAY**  
Analyzed for 2009  
Construction Season

**GRAPHICAL REPRESENTATION OF TRAFFIC MODEL INPUT AND OUTPUT**

**SUNDAY EASTBOUND DIRECTION**

