

<b>STH 29: IH 93 TO CTH X (MARATHON COUNTY)</b> <b>CONTINUOUS (24 HOUR) CLOSURE</b> <b>DIVERSION ROUTE: BUS 51, IH 39</b>	<b>MAY</b>
	Analyzed for 2009 Construction Season

**SUMMARY OF TRAFFIC MODEL OUTPUT**

**SATURDAY WESTBOUND DIRECTION**

TIME OF DAY	FLOWS AND CAPACITY IN VEH/HR						AVERAGE SPEEDS IN MPH								
	MAIN ROUTE		ALTERNATE ROUTE		SITE CAPA CITY	FLOW MAIN ROUTE	FLOW DIVER -TING	TOTAL DIVN FLOW	AV.DEL PER VEH (MINS)	AVERAGE QUEUE (VEH)	MAIN ROUTE		ALTERNATE ROUTE		
	DEMAND FLOW	PCT HEAVY	NORMAL FLOW	PCT HEAVY							WITHOUT WORK ZN	WITH WORK ZN	SITE	WITHOUT WORK ZN	WITH WORK ZN
MID-1 AM	136	0.0	71	0.0	1500	136	0	71	0.44	0	66.1	48.3	45.0	38.4	38.4
1-2 AM	95	0.0	49	0.0	1500	95	0	49	0.43	0	66.2	48.4	45.1	38.4	38.4
2-3 AM	73	0.0	38	0.0	1500	73	0	38	0.43	0	66.3	48.5	45.2	38.4	38.4
3-4 AM	80	0.0	42	0.0	1500	80	0	42	0.43	0	66.3	48.5	45.1	38.4	38.4
4-5 AM	125	0.0	65	0.0	1500	125	0	65	0.43	0	66.1	48.3	45.0	38.4	38.4
5-6 AM	233	0.0	121	0.0	1500	233	0	121	0.45	0	66.0	47.9	44.5	38.3	38.3
6-7 AM	385	0.0	202	0.0	1500	385	0	202	0.46	0	65.6	47.3	44.0	38.1	38.1
7-8 AM	631	0.0	329	0.0	1500	631	0	329	0.48	0	65.2	46.4	43.0	37.8	37.8
8-9 AM	849	0.0	444	0.0	1500	849	0	444	0.50	0	64.8	45.6	42.2	37.6	37.6
9-10 AM	1048	0.0	548	0.0	1500	1048	0	548	0.52	0	64.5	45.0	41.5	37.4	37.4
10-11 AM	1157	0.0	604	0.0	1500	1157	0	604	0.58	0	64.2	43.4	39.9	37.3	37.3
11A-NOON	1163	0.0	608	0.0	1500	1163	0	608	0.59	0	64.2	43.2	39.7	37.2	37.2
NOON-1PM	1119	0.0	585	0.0	1500	1119	0	585	0.53	0	64.3	44.7	41.2	37.3	37.3
1-2 PM	1011	0.0	528	0.0	1500	1011	0	528	0.52	0	64.5	45.1	41.7	37.4	37.4
2-3 PM	989	0.0	517	0.0	1500	989	0	517	0.52	0	64.5	45.1	41.7	37.4	37.4
3-4 PM	933	0.0	487	0.0	1500	933	0	487	0.51	0	64.6	45.3	41.9	37.5	37.5
4-5 PM	851	0.0	445	0.0	1500	851	0	445	0.50	0	64.8	45.6	42.2	37.6	37.6
5-6 PM	762	0.0	398	0.0	1500	762	0	398	0.50	0	65.0	46.0	42.5	37.7	37.7
6-7 PM	670	0.0	351	0.0	1500	670	0	351	0.49	0	65.1	46.3	42.8	37.8	37.8
7-8 PM	566	0.0	296	0.0	1500	566	0	296	0.48	0	65.3	46.6	43.3	37.9	37.9
8-9 PM	428	0.0	223	0.0	1500	428	0	223	0.46	0	65.6	47.1	43.8	38.0	38.0
9-10 PM	357	0.0	186	0.0	1500	357	0	186	0.46	0	65.7	47.4	44.0	38.1	38.1
10-11 PM	279	0.0	146	0.0	1500	279	0	146	0.45	0	65.9	47.7	44.3	38.2	38.2
11PM-MID	188	0.0	99	0.0	1500	188	0	99	0.44	0	66.0	48.1	44.7	38.3	38.3

*----- SITE BREAKDOWN DELAYS -----*	
BREAKDOWN DURATION (MINS)	0
RANGE OF QUEUE DELAY - MIN (VEH-H) MAX	0.0
RANGE OF DIVN DELAY - MIN (VEH-H) MAX	0.0
AV BREAKDOWNS PER DAY	0.00
AV QUEUE DELAY/DAY (VEH-H)	0.0
AV DIVN DELAY/DAY (VEH-H)	0.0
AV TOTAL DELAY/DAY (VEH-H)	0.0

*----- SITE ACCIDENT DELAYS -----*	
ACCIDENT DURATION (MINS)	0
RANGE OF QUEUE DELAY - MIN (VEH-H) MAX	0.0
RANGE OF DIVN DELAY - MIN (VEH-H) MAX	0.0
AV ACCIDENTS PER DAY	0.00
AV QUEUE DELAY/DAY (VEH-H)	0.0
AV DIVN DELAY/DAY (VEH-H)	0.0
AV TOTAL DELAY/DAY (VEH-H)	0.0

AVERAGE ACCIDENT NUMBERS (PIA/DAY)	
MAIN ROUTE WITHOUT WORKS	0.0029
MAIN ROUTE WITH WORKS	0.0020
DIVERSION	0.0650

PIA: Personal Injury Accidents

IMPACTS ON ROAD USERS	
ROAD USER COSTS PER DAY ( DOLLARS)	\$1,835
CONGESTED HOURS PER DAY*	0

\*Delays Exceeding 15 Minutes

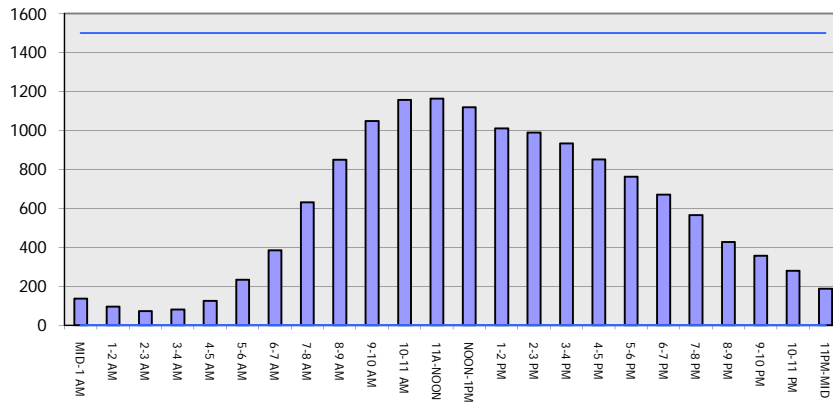
**STH 29: IH 93 TO CTH X (MARATHON COUNTY)  
 CONTINUOUS (24 HOUR) CLOSURE  
 DIVERSION ROUTE: BUS 51, IH 39**

**MAY**  
 Analyzed for 2009  
 Construction Season

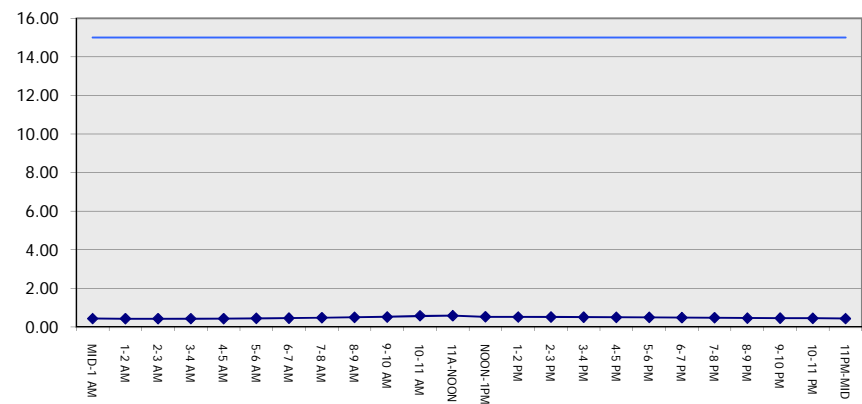
**GRAPHICAL REPRESENTATION OF TRAFFIC MODEL INPUT AND OUTPUT**

**SATURDAY WESTBOUND DIRECTION**

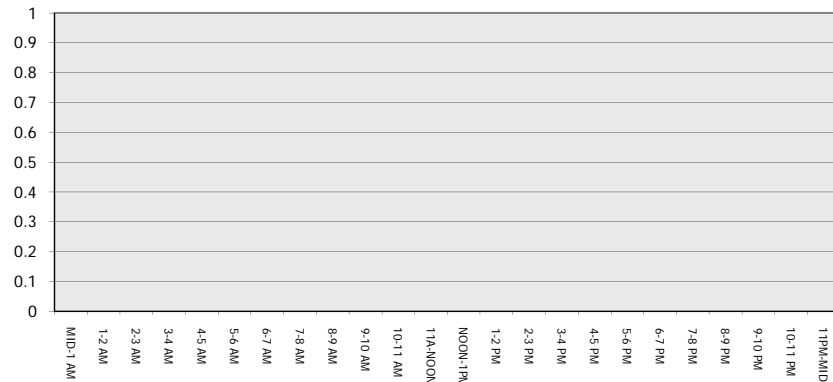
**Main Route - Traffic Demand (Vehicles Per Hour)**



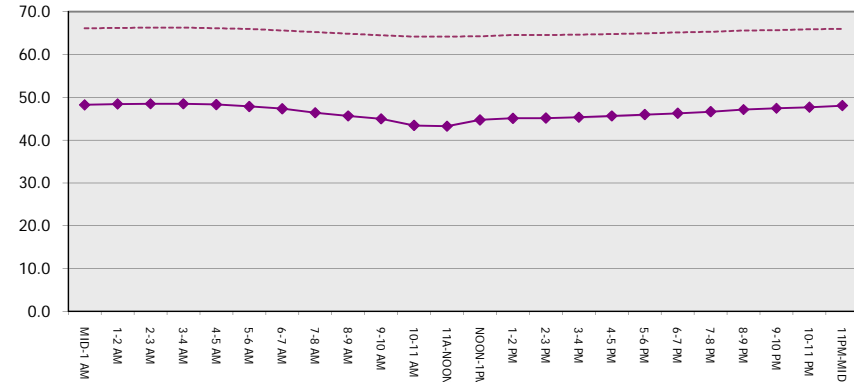
**Main Route Average Delay Per Vehicle (Minutes)**



**Main Route - Average Queue Length (Vehicles)**



**Main Route - Average Speed (MPH)**



<b>STH 29: IH 93 TO CTH X (MARATHON COUNTY)</b> <b>CONTINUOUS (24 HOUR) CLOSURE</b> <b>DIVERSION ROUTE: BUS 51, IH 39</b>	<b>MAY</b>
	Analyzed for 2009 Construction Season

**SUMMARY OF TRAFFIC MODEL OUTPUT**

SATURDAY EASTBOUND DIRECTION

TIME OF DAY	FLOWS AND CAPACITY IN VEH/HR								AVERAGE SPEEDS IN MPH						
	MAIN		DIVERSION		SITE CAPA CITY	FLOW MAIN ROUTE	FLOW DIVER -TING	TOTAL DIVN FLOW	AV.DEL PER VEH (MINS)	AVERAGE QUEUE (VEH)	MAIN ROUTE		SITE	ALTERNATE ROUTE	
	DEMAND FLOW	PCT HEAVY	NORMAL FLOW	PCT HEAVY							WITHOUT WORK ZN	WITH WORK ZN		WITHOUT WORK ZN	WITH WORK ZN
MID-1 AM	133	0.0	69	0.0	1500	133	0	69	0.44	0	66.1	48.3	45.0	38.2	38.2
1-2 AM	86	0.0	45	0.0	1500	86	0	45	0.43	0	66.2	48.4	45.1	38.3	38.3
2-3 AM	70	0.0	37	0.0	1500	70	0	37	0.43	0	66.3	48.5	45.2	38.4	38.4
3-4 AM	59	0.0	31	0.0	1500	59	0	31	0.43	0	66.3	48.6	45.3	38.4	38.4
4-5 AM	86	0.0	45	0.0	1500	86	0	45	0.43	0	66.2	48.4	45.1	38.3	38.3
5-6 AM	130	0.0	68	0.0	1500	130	0	68	0.44	0	66.1	48.3	45.0	38.2	38.2
6-7 AM	257	0.0	135	0.0	1500	257	0	135	0.45	0	65.9	47.8	44.5	37.9	37.9
7-8 AM	411	0.0	214	0.0	1500	411	0	214	0.46	0	65.6	47.2	43.8	37.6	37.6
8-9 AM	627	0.0	327	0.0	1500	627	0	327	0.48	0	65.2	46.5	43.0	37.1	37.1
9-10 AM	811	0.0	424	0.0	1500	811	0	424	0.50	0	64.9	45.8	42.4	36.7	36.7
10-11 AM	984	0.0	515	0.0	1500	984	0	515	0.52	0	64.5	45.1	41.7	35.4	35.4
11A-NOON	1034	0.0	540	0.0	1500	1034	0	540	0.52	0	64.5	45.0	41.5	35.0	35.0
NOON-1PM	1100	0.0	575	0.0	1500	1100	0	575	0.53	0	64.3	44.8	41.4	34.3	34.3
1-2 PM	1026	0.0	536	0.0	1500	1026	0	536	0.52	0	64.5	45.0	41.6	35.0	35.0
2-3 PM	1010	0.0	528	0.0	1500	1010	0	528	0.52	0	64.5	45.1	41.7	35.2	35.2
3-4 PM	1015	0.0	530	0.0	1500	1015	0	530	0.52	0	64.5	45.1	41.6	35.1	35.1
4-5 PM	938	0.0	490	0.0	1500	938	0	490	0.51	0	64.6	45.3	41.9	35.8	35.8
5-6 PM	841	0.0	440	0.0	1500	841	0	440	0.50	0	64.8	45.6	42.2	36.6	36.6
6-7 PM	734	0.0	384	0.0	1500	734	0	384	0.49	0	65.0	46.0	42.6	36.9	36.9
7-8 PM	642	0.0	336	0.0	1500	642	0	336	0.48	0	65.2	46.4	43.0	37.1	37.1
8-9 PM	573	0.0	300	0.0	1500	573	0	300	0.48	0	65.3	46.6	43.2	37.3	37.3
9-10 PM	443	0.0	232	0.0	1500	443	0	232	0.47	0	65.6	47.1	43.7	37.5	37.5
10-11 PM	293	0.0	153	0.0	1500	293	0	153	0.45	0	65.8	47.7	44.3	37.9	37.9
11PM-MID	201	0.0	105	0.0	1500	201	0	105	0.44	0	66.0	48.0	44.6	38.1	38.1

*----- SITE BREAKDOWN DELAYS -----*	
BREAKDOWN DURATION (MINS)	0
RANGE OF QUEUE DELAY - MIN	0.0
(VEH-H) MAX	0.0
RANGE OF DIVN DELAY - MIN	0.0
(VEH-H) MAX	0.0
AV BREAKDOWNS PER DAY	0.00
AV QUEUE DELAY/DAY (VEH-H)	0.0
AV DIVN DELAY/DAY (VEH-H)	0.0
AV TOTAL DELAY/DAY (VEH-H)	0.0

*----- SITE ACCIDENT DELAYS -----*	
ACCIDENT DURATION (MINS)	0
RANGE OF QUEUE DELAY - MIN	0.0
(VEH-H) MAX	0.0
RANGE OF DIVN DELAY - MIN	0.0
(VEH-H) MAX	0.0
AV ACCIDENTS PER DAY	0.00
AV QUEUE DELAY/DAY (VEH-H)	0.0
AV DIVN DELAY/DAY (VEH-H)	0.0
AV TOTAL DELAY/DAY (VEH-H)	0.0

AVERAGE ACCIDENT NUMBERS (PIA/DAY)	
MAIN ROUTE WITHOUT WORKS	0.0028
MAIN ROUTE WITH WORKS	0.0019
DIVERSION	0.0622

PIA: Personal Injury Accidents

IMPACTS ON ROAD USERS	
ROAD USER COSTS PER DAY ( DOLLARS)	\$1,715
CONGESTED HOURS PER DAY*	0

\*Delays Exceeding 15 Minutes

**STH 29: IH 93 TO CTH X (MARATHON COUNTY)  
 CONTINUOUS (24 HOUR) CLOSURE  
 DIVERSION ROUTE: BUS 51, IH 39**

**MAY**  
 Analyzed for 2009  
 Construction Season

**GRAPHICAL REPRESENTATION OF TRAFFIC MODEL INPUT AND OUTPUT**  
**SATURDAY EASTBOUND DIRECTION**

