

<b>USH 51: CTH U TO STH 29 W (MARATHON COUNTY)                  CONTINUOUS (24 HOUR) CLOSURE                  NO DIVERSION ROUTE (MAX QUEUE METHOD)</b>	<b>OCTOBER</b>
	Analyzed for 2009 Construction Season

**SUMMARY OF TRAFFIC MODEL OUTPUT**

SUNDAY SOUTHBOUND DIRECTION

TIME OF DAY	FLOWS AND CAPACITY IN VEH/HR						AVERAGE SPEEDS IN MPH				
	MAIN ROUTE		SITE CAPA CITY	FLOW		AV.DEL PER VEH (MINS)	AVERAGE QUEUE (VEH)	MAIN ROUTE		SITE	
	DEMAND FLOW	PCT HEAVY		MAIN ROUTE	'DIVER TED'			WITHOUT WORK ZONE	WITH WORK ZONE		
MID-1 AM	111	0.0	1500	111	0	0.43	0	66.2	52.9	45.0	
1-2 AM	69	0.0	1500	69	0	0.43	0	66.3	53.0	45.2	
2-3 AM	60	0.0	1500	60	0	0.43	0	66.3	53.1	45.3	
3-4 AM	41	0.0	1500	41	0	0.43	0	66.3	53.2	45.3	
4-5 AM	43	0.0	1500	43	0	0.43	0	66.3	53.1	45.3	
5-6 AM	102	0.0	1500	102	0	0.43	0	66.2	52.9	45.1	
6-7 AM	134	0.0	1500	134	0	0.44	0	66.1	52.8	45.0	
7-8 AM	223	0.0	1500	223	0	0.44	0	66.0	52.5	44.6	
8-9 AM	388	0.0	1500	388	0	0.46	0	65.6	51.9	44.0	
9-10 AM	699	0.0	1500	699	0	0.49	0	65.1	50.9	42.8	
10-11 AM	1025	0.0	1500	1025	0	0.52	0	64.5	49.8	41.6	
11AM-NOON	1315	0.0	1499	1315	0	0.78	0	64.0	44.5	35.2	
NOON-1PM	1528	0.0	1499	1528	0	1.28	7	63.5	37.1	30.9	
1-2 PM	1590	0.0	1500	1590	0	3.61	73	63.4	21.1	30.8	
2-3 PM	1616	0.0	1500	1616	0	7.63	181	63.4	12.7	30.8	
3-4 PM	1531	0.0	1499	1531	0	10.77	263	63.5	10.6	30.8	
4-5 PM	1290	0.0	1499	1290	0	7.13	178	64.0	13.6	31.9	
5-6 PM	1039	0.0	1500	1039	0	0.63	4	64.5	47.5	41.4	
6-7 PM	821	0.0	1500	821	0	0.50	0	64.8	50.4	42.3	
7-8 PM	555	0.0	1500	555	0	0.48	0	65.3	51.4	43.3	
8-9 PM	381	0.0	1500	381	0	0.46	0	65.7	51.9	44.0	
9-10 PM	238	0.0	1500	238	0	0.45	0	66.0	52.4	44.5	
10-11 PM	153	0.0	1500	153	0	0.44	0	66.1	52.7	44.9	
11PM-MID	91	0.0	1500	91	0	0.43	0	66.2	53.0	45.1	

**\*----- SITE BREAKDOWN DELAYS -----\***

BREAKDOWN DURATION (MINS)	0
RANGE OF QUEUE DELAY - MIN (VEH-H) MAX	0.0
AV BREAKDOWNS PER DAY	0.00
AV QUEUE DELAY/DAY (VEH-H)	0.0
AV TOTAL DELAY/DAY (VEH-H)	0.0

**\*----- SITE ACCIDENT DELAYS -----\***

BREAKDOWN DURATION (MINS)	0
RANGE OF QUEUE DELAY - MIN (VEH-H) MAX	0
AV BREAKDOWNS PER DAY	0
AV QUEUE DELAY/DAY (VEH-H)	0
AV TOTAL DELAY/DAY (VEH-H)	0

**AVERAGE ACCIDENT NUMBERS (PIA/DAY)**

MAIN ROUTE WITHOUT WORKS	0.0046
MAIN ROUTE WITH WORKS	0.0036
'DIVERSION'	0.0000

PIA: Personal Injury Accidents

**IMPACTS ON ROAD USERS**

ROAD USER COSTS PER DAY	\$13,992
CONGESTED HOURS PER DAY*	0

\*Delays Exceeding User-Specified Maximum

**USH 51: CTH U TO STH 29 W (MARATHON COUNTY)  
CONTINUOUS (24 HOUR) CLOSURE  
NO DIVERSION ROUTE (MAX QUEUE METHOD)**

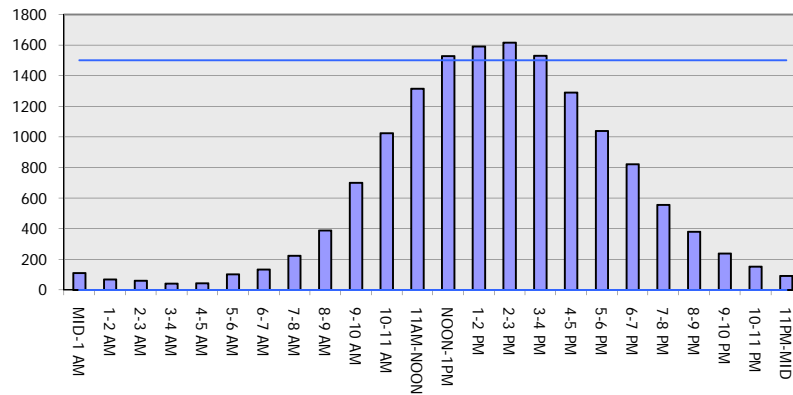
**OCTOBER**

Analyzed for 2009  
Construction Season

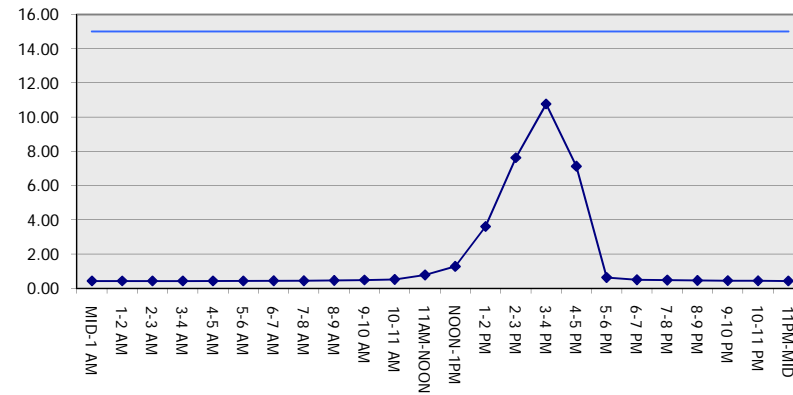
**GRAPHICAL REPRESENTATION OF TRAFFIC MODEL INPUT AND OUTPUT**

**SUNDAY SOUTHBOUND DIRECTION**

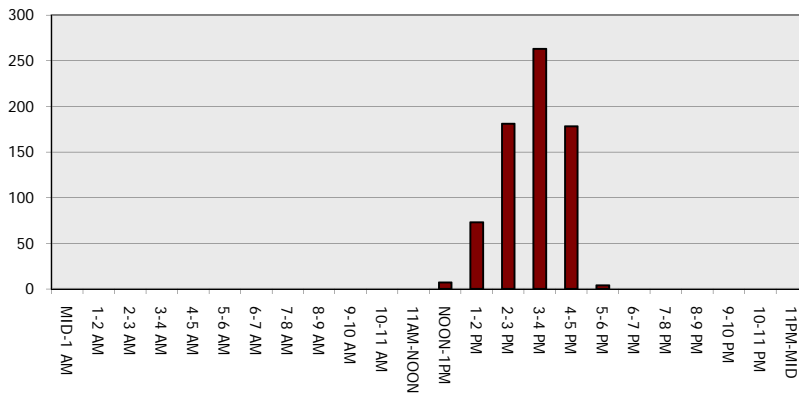
**Main Route - Traffic Demand (Vehicles Per Hour)**



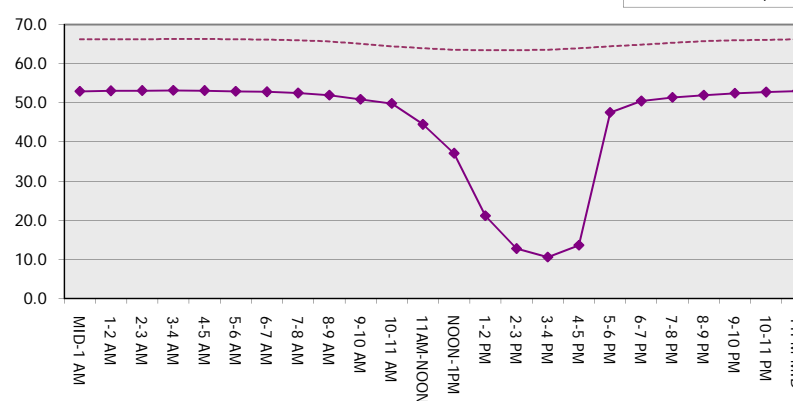
**Main Route Average Delay Per Vehicle (Minutes)**



**Main Route - Average Queue Length (Vehicles)**



**Main Route - Average Speed (MPH)**



<b>USH 51: CTH U TO STH 29 W (MARATHON COUNTY)                  CONTINUOUS (24 HOUR) CLOSURE                  NO DIVERSION ROUTE (MAX QUEUE METHOD)</b>	<b>OCTOBER</b>
	Analyzed for 2009 Construction Season

**SUMMARY OF TRAFFIC MODEL OUTPUT**

SUNDAY NORTHBOUND DIRECTION

TIME OF DAY	FLOWS AND CAPACITY IN VEH/HR						AVERAGE SPEEDS IN MPH			
	MAIN ROUTE		SITE CAPA CITY	FLOW		AV.DEL PER VEH (MINS)	AVERAGE QUEUE (VEH)	MAIN ROUTE		SITE
	DEMAND FLOW	PCT HEAVY		MAIN ROUTE	'DIVER TED'			WITHOUT WORK ZONE	WITH WORK ZONE	
MID-1 AM	118	0.0	1500	118	0	0.43	0	66.1	52.8	45.0
1-2 AM	83	0.0	1500	83	0	0.43	0	66.2	53.0	45.1
2-3 AM	64	0.0	1500	64	0	0.43	0	66.3	53.0	45.2
3-4 AM	46	0.0	1500	46	0	0.43	0	66.3	53.1	45.3
4-5 AM	38	0.0	1500	38	0	0.43	0	66.3	53.2	45.3
5-6 AM	80	0.0	1500	80	0	0.43	0	66.3	53.0	45.1
6-7 AM	137	0.0	1500	137	0	0.44	0	66.1	52.8	45.0
7-8 AM	195	0.0	1500	195	0	0.44	0	66.0	52.6	44.7
8-9 AM	312	0.0	1500	312	0	0.45	0	65.8	52.2	44.2
9-10 AM	464	0.0	1500	464	0	0.47	0	65.5	51.7	43.7
10-11 AM	612	0.0	1500	612	0	0.48	0	65.3	51.2	43.1
11AM-NOON	737	0.0	1500	737	0	0.49	0	65.0	50.7	42.6
NOON-1PM	837	0.0	1500	837	0	0.50	0	64.8	50.4	42.2
1-2 PM	857	0.0	1500	857	0	0.51	0	64.8	50.4	42.2
2-3 PM	844	0.0	1500	844	0	0.50	0	64.8	50.4	42.2
3-4 PM	840	0.0	1500	840	0	0.50	0	64.8	50.4	42.2
4-5 PM	761	0.0	1500	761	0	0.50	0	65.0	50.7	42.5
5-6 PM	729	0.0	1500	729	0	0.49	0	65.0	50.7	42.7
6-7 PM	594	0.0	1500	594	0	0.48	0	65.3	51.2	43.2
7-8 PM	440	0.0	1500	440	0	0.47	0	65.6	51.7	43.7
8-9 PM	319	0.0	1500	319	0	0.45	0	65.8	52.2	44.2
9-10 PM	242	0.0	1500	242	0	0.45	0	66.0	52.4	44.5
10-11 PM	169	0.0	1500	169	0	0.44	0	66.1	52.7	44.8
11PM-MID	98	0.0	1500	98	0	0.43	0	66.2	52.9	45.1

*----- SITE BREAKDOWN DELAYS -----*	
BREAKDOWN DURATION (MINS)	0
RANGE OF QUEUE DELAY - MIN (VEH-H) MAX	0.0
AV BREAKDOWNS PER DAY	0.00
AV QUEUE DELAY/DAY (VEH-H)	0.0
AV TOTAL DELAY/DAY (VEH-H)	0.0

*----- SITE ACCIDENT DELAYS -----*	
BREAKDOWN DURATION (MINS)	0
RANGE OF QUEUE DELAY - MIN (VEH-H) MAX	0
AV BREAKDOWNS PER DAY	0
AV QUEUE DELAY/DAY (VEH-H)	0
AV TOTAL DELAY/DAY (VEH-H)	0

AVERAGE ACCIDENT NUMBERS (PIA/DAY)	
MAIN ROUTE WITHOUT WORKS	0.0029
MAIN ROUTE WITH WORKS	0.0023
'DIVERSION'	0.0000

PIA: Personal Injury Accidents

ECONOMIC IMPACT ON ROAD USERS	
ROAD USER COSTS PER DAY	\$1,302
CONGESTED HOURS PER DAY*	0

\*Delays Exceeding User-Specified Maximum

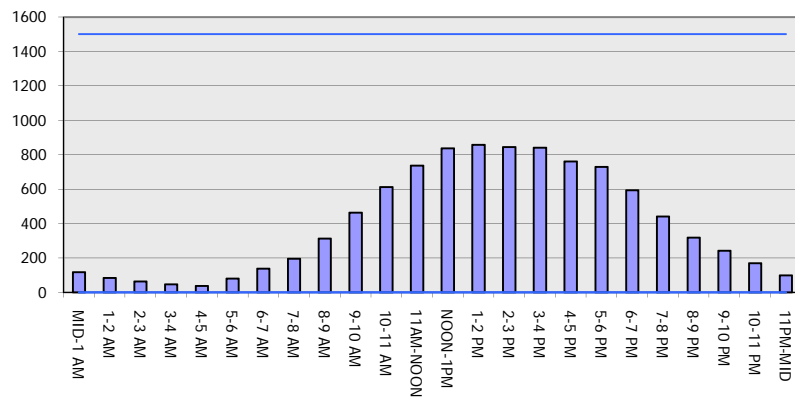
**USH 51: CTH U TO STH 29 W (MARATHON COUNTY)  
 CONTINUOUS (24 HOUR) CLOSURE  
 NO DIVERSION ROUTE (MAX QUEUE METHOD)**

**OCTOBER**

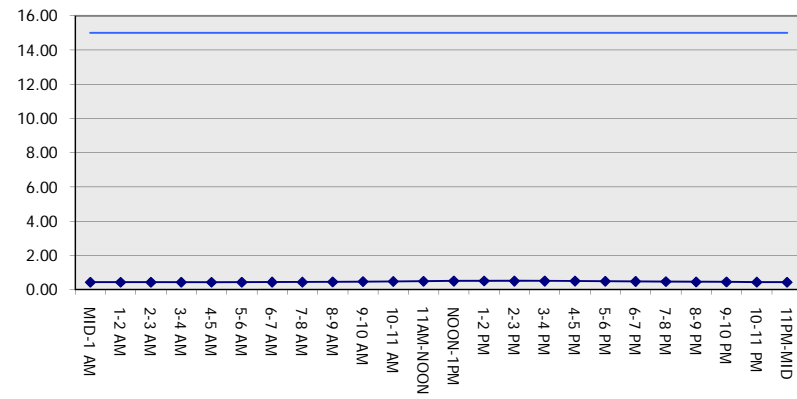
Analyzed for 2009  
 Construction Season

**GRAPHICAL REPRESENTATION OF TRAFFIC MODEL INPUT AND OUTPUT**  
**SUNDAY NORTHBOUND DIRECTION**

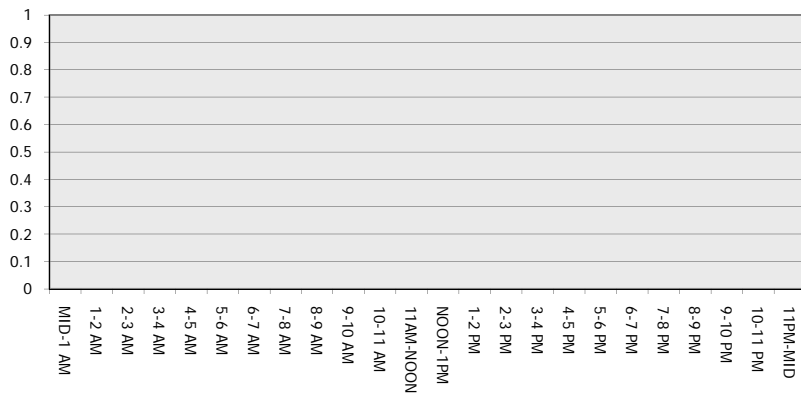
**Main Route - Traffic Demand (Vehicles Per Hour)**



**Main Route Average Delay Per Vehicle (Minutes)**



**Main Route - Average Queue Length (Vehicles)**



**Main Route - Average Speed (MPH)**

