

**USH 51: CTH U TO STH 29 W (MARATHON COUNTY)
CONTINUOUS (24 HOUR) CLOSURE
NO DIVERSION ROUTE (MAX QUEUE METHOD)**

OCTOBER

Analyzed for 2009
Construction Season

SUMMARY OF TRAFFIC MODEL OUTPUT

SATURDAY SOUTHBOUND DIRECTION

TIME OF DAY	FLOWS AND CAPACITY IN VEH/HR						AVERAGE SPEEDS IN MPH			
	MAIN ROUTE		SITE CAPA CITY	FLOW		AV.DEL PER VEH (MINS)	AVERAGE QUEUE (VEH)	MAIN ROUTE		SITE
	DEMAND FLOW	PCT HEAVY		MAIN ROUTE	'DIVER TED'			WITHOUT WORK ZONE	WITH WORK ZONE	
MID-1 AM	105	0.0	1500	105	0	0.43	0	66.2	52.9	45.1
1-2 AM	71	0.0	1500	71	0	0.43	0	66.3	53.0	45.2
2-3 AM	54	0.0	1500	54	0	0.43	0	66.3	53.1	45.3
3-4 AM	68	0.0	1500	68	0	0.43	0	66.3	53.0	45.2
4-5 AM	80	0.0	1500	80	0	0.43	0	66.3	53.0	45.1
5-6 AM	157	0.0	1500	157	0	0.44	0	66.1	52.7	44.8
6-7 AM	302	0.0	1500	302	0	0.45	0	65.8	52.2	44.3
7-8 AM	434	0.0	1500	434	0	0.46	0	65.6	51.7	43.8
8-9 AM	585	0.0	1500	585	0	0.48	0	65.3	51.2	43.2
9-10 AM	721	0.0	1500	721	0	0.49	0	65.0	50.8	42.7
10-11 AM	848	0.0	1500	848	0	0.50	0	64.8	50.4	42.2
11AM-NOON	871	0.0	1500	871	0	0.51	0	64.8	50.3	42.2
NOON-1PM	935	0.0	1500	935	0	0.51	0	64.6	50.1	41.9
1-2 PM	842	0.0	1500	842	0	0.50	0	64.8	50.4	42.2
2-3 PM	902	0.0	1500	902	0	0.51	0	64.7	50.2	42.0
3-4 PM	864	0.0	1500	864	0	0.51	0	64.8	50.3	42.2
4-5 PM	815	0.0	1500	815	0	0.50	0	64.9	50.5	42.4
5-6 PM	679	0.0	1500	679	0	0.49	0	65.1	50.9	42.8
6-7 PM	651	0.0	1500	651	0	0.49	0	65.1	51.0	42.9
7-8 PM	510	0.0	1500	510	0	0.47	0	65.5	51.5	43.5
8-9 PM	457	0.0	1500	457	0	0.47	0	65.5	51.7	43.7
9-10 PM	344	0.0	1500	344	0	0.46	0	65.8	52.0	44.1
10-11 PM	226	0.0	1500	226	0	0.44	0	66.0	52.5	44.6
11PM-MID	170	0.0	1500	170	0	0.44	0	66.1	52.7	44.8

----- SITE BREAKDOWN DELAYS -----

BREAKDOWN DURATION (MINS)	0
RANGE OF QUEUE DELAY - MIN (VEH-H) MAX	0.0
AV BREAKDOWNS PER DAY	0.00
AV QUEUE DELAY/DAY (VEH-H)	0.0
AV TOTAL DELAY/DAY (VEH-H)	0.0

----- SITE ACCIDENT DELAYS -----

BREAKDOWN DURATION (MINS)	0
RANGE OF QUEUE DELAY - MIN (VEH-H) MAX	0
AV BREAKDOWNS PER DAY	0
AV QUEUE DELAY/DAY (VEH-H)	0
AV TOTAL DELAY/DAY (VEH-H)	0

AVERAGE ACCIDENT NUMBERS (PIA/DAY)

MAIN ROUTE WITHOUT WORKS	0.0035
MAIN ROUTE WITH WORKS	0.0028
'DIVERSION'	0.0000

PIA: Personal Injury Accidents

IMPACTS ON ROAD USERS

ROAD USER COSTS PER DAY	\$1,446
CONGESTED HOURS PER DAY*	0

*Delays Exceeding User-Specified Maximum

**USH 51: CTH U TO STH 29 W (MARATHON COUNTY)
CONTINUOUS (24 HOUR) CLOSURE
NO DIVERSION ROUTE (MAX QUEUE METHOD)**

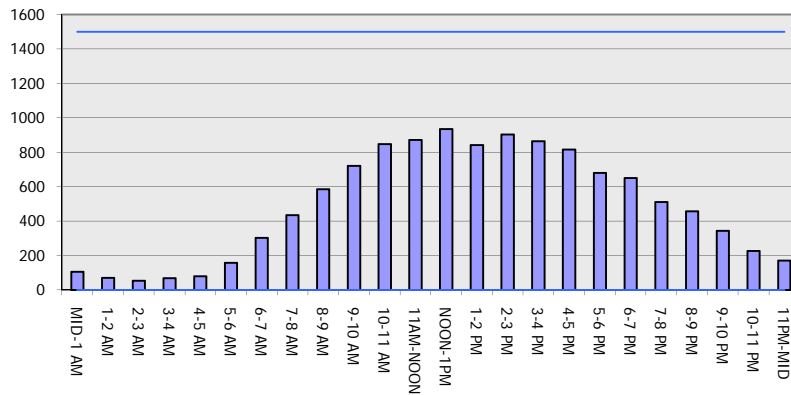
OCTOBER

Analyzed for 2009
Construction Season

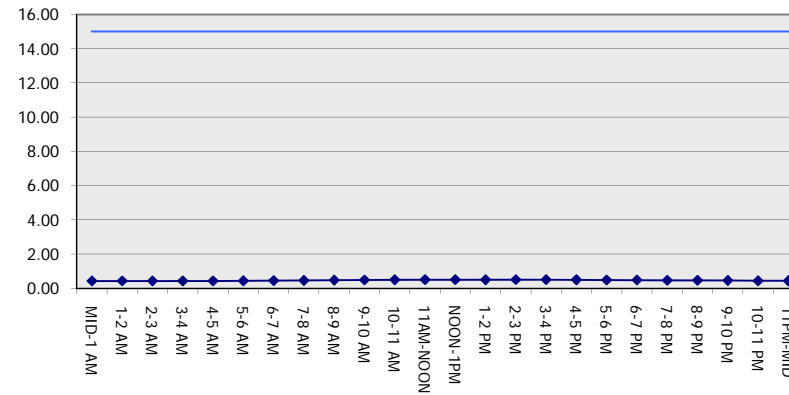
GRAPHICAL REPRESENTATION OF TRAFFIC MODEL INPUT AND OUTPUT

SATURDAY SOUTHBOUND DIRECTION

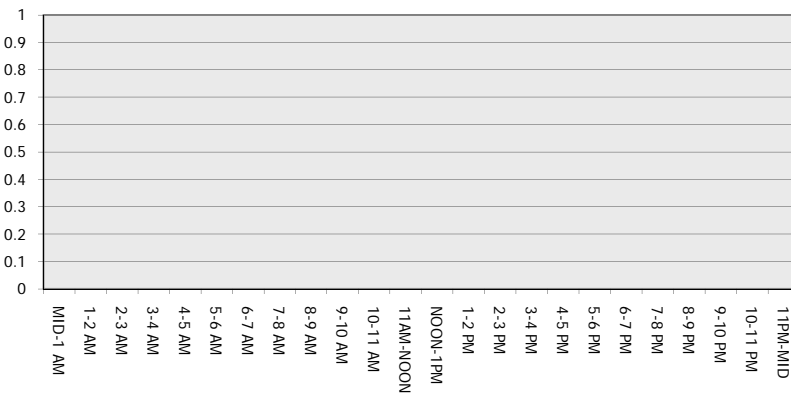
Main Route - Traffic Demand (Vehicles Per Hour)



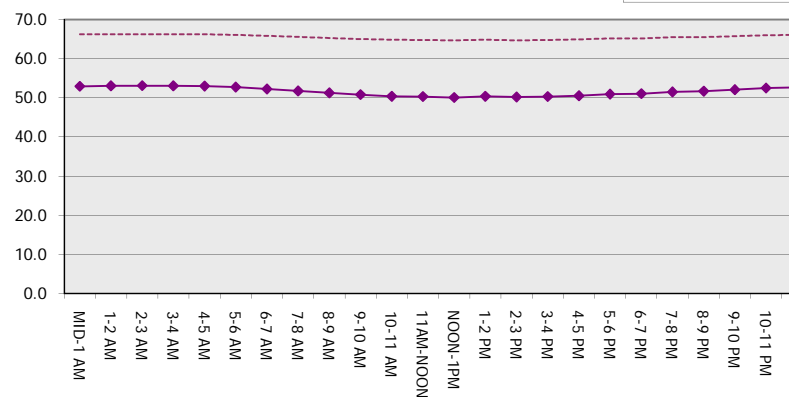
Main Route Average Delay Per Vehicle (Minutes)



Main Route - Average Queue Length (Vehicles)



Main Route - Average Speed (MPH)



USH 51: CTH U TO STH 29 W (MARATHON COUNTY) CONTINUOUS (24 HOUR) CLOSURE NO DIVERSION ROUTE (MAX QUEUE METHOD)	OCTOBER
	Analyzed for 2009 Construction Season

SUMMARY OF TRAFFIC MODEL OUTPUT

SATURDAY NORTHBOUND DIRECTION

TIME OF DAY	FLOWS AND CAPACITY IN VEH/HR							AVERAGE SPEEDS IN MPH		
	MAIN ROUTE		SITE CAPA CITY	FLOW		AV.DEL PER VEH (MINS)	AVERAGE QUEUE (VEH)	MAIN ROUTE		SITE
	DEMAND FLOW	PCT HEAVY		MAIN ROUTE	'DIVER TED'			WITHOUT WORK ZONE	WITH WORK ZONE	
MID-1 AM	155	0.0	1500	155	0	0.44	0	66.1	52.7	44.8
1-2 AM	94	0.0	1500	94	0	0.43	0	66.2	53.0	45.1
2-3 AM	90	0.0	1500	90	0	0.43	0	66.2	53.0	45.1
3-4 AM	75	0.0	1500	75	0	0.43	0	66.3	53.0	45.2
4-5 AM	90	0.0	1500	90	0	0.43	0	66.2	53.0	45.1
5-6 AM	149	0.0	1500	149	0	0.44	0	66.1	52.7	44.9
6-7 AM	279	0.0	1500	279	0	0.45	0	65.9	52.3	44.3
7-8 AM	412	0.0	1500	412	0	0.46	0	65.6	51.9	43.8
8-9 AM	586	0.0	1500	586	0	0.48	0	65.3	51.2	43.2
9-10 AM	740	0.0	1500	740	0	0.49	0	65.0	50.7	42.6
10-11 AM	873	0.0	1500	873	0	0.51	0	64.8	50.3	42.1
11AM-NOON	914	0.0	1500	914	0	0.51	0	64.7	50.2	42.0
NOON-1PM	914	0.0	1500	914	0	0.51	0	64.7	50.2	42.0
1-2 PM	882	0.0	1500	882	0	0.51	0	64.8	50.2	42.1
2-3 PM	821	0.0	1500	821	0	0.50	0	64.8	50.4	42.3
3-4 PM	830	0.0	1500	830	0	0.50	0	64.8	50.4	42.3
4-5 PM	807	0.0	1500	807	0	0.50	0	64.9	50.5	42.4
5-6 PM	723	0.0	1500	723	0	0.49	0	65.0	50.8	42.7
6-7 PM	646	0.0	1500	646	0	0.49	0	65.2	51.0	43.0
7-8 PM	530	0.0	1500	530	0	0.47	0	65.4	51.4	43.4
8-9 PM	404	0.0	1500	404	0	0.46	0	65.6	51.9	43.9
9-10 PM	332	0.0	1500	332	0	0.45	0	65.8	52.1	44.2
10-11 PM	242	0.0	1500	242	0	0.45	0	66.0	52.4	44.5
11PM-MID	188	0.0	1500	188	0	0.44	0	66.0	52.6	44.7

----- SITE BREAKDOWN DELAYS -----	
BREAKDOWN DURATION (MINS)	0
RANGE OF QUEUE DELAY - MIN (VEH-H) MAX	0.0
AV BREAKDOWNS PER DAY	0.00
AV QUEUE DELAY/DAY (VEH-H)	0.0
AV TOTAL DELAY/DAY (VEH-H)	0.0

----- SITE ACCIDENT DELAYS -----	
BREAKDOWN DURATION (MINS)	0
RANGE OF QUEUE DELAY - MIN (VEH-H) MAX	0
AV BREAKDOWNS PER DAY	0
AV QUEUE DELAY/DAY (VEH-H)	0
AV TOTAL DELAY/DAY (VEH-H)	0

AVERAGE ACCIDENT NUMBERS (PIA/DAY)	
MAIN ROUTE WITHOUT WORKS	0.0036
MAIN ROUTE WITH WORKS	0.0028
'DIVERSION'	0.0000

PIA: Personal Injury Accidents

ECONOMIC IMPACT ON ROAD USERS	
ROAD USER COSTS PER DAY	\$1,454
CONGESTED HOURS PER DAY*	0

*Delays Exceeding User-Specified Maximum

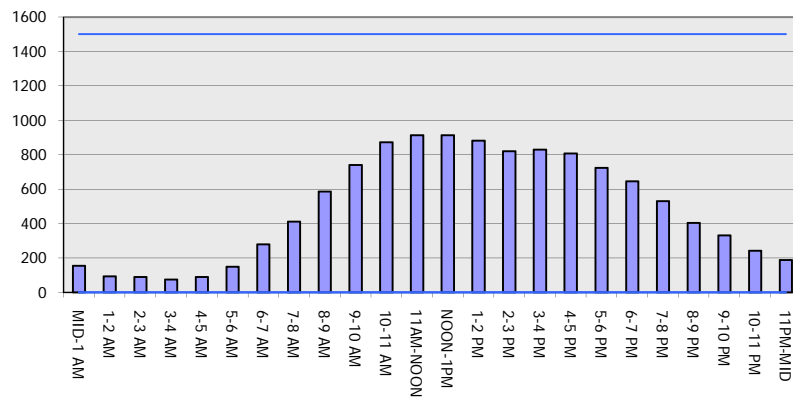
**USH 51: CTH U TO STH 29 W (MARATHON COUNTY)
CONTINUOUS (24 HOUR) CLOSURE
NO DIVERSION ROUTE (MAX QUEUE METHOD)**

OCTOBER

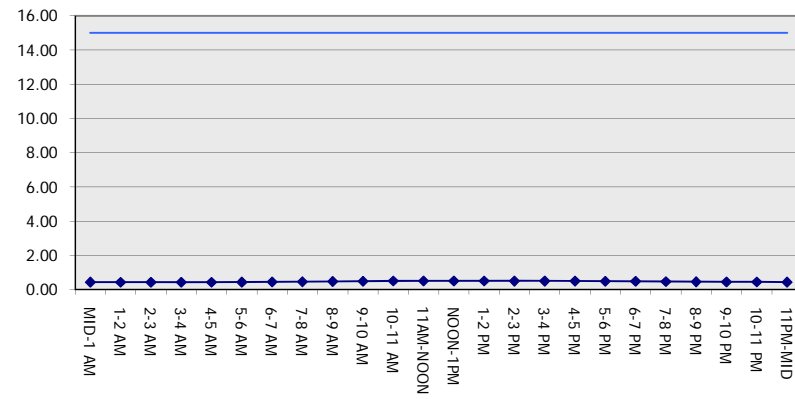
Analyzed for 2009
Construction Season

GRAPHICAL REPRESENTATION OF TRAFFIC MODEL INPUT AND OUTPUT
SATURDAY NORTHBOUND DIRECTION

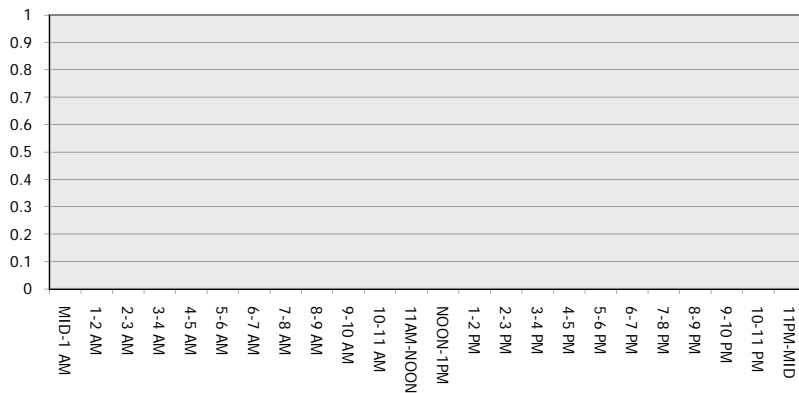
Main Route - Traffic Demand (Vehicles Per Hour)



Main Route Average Delay Per Vehicle (Minutes)



Main Route - Average Queue Length (Vehicles)



Main Route - Average Speed (MPH)

