

USH 51: CTH U TO STH 29 W (MARATHON COUNTY) CONTINUOUS (24 HOUR) CLOSURE NO DIVERSION ROUTE (MAX QUEUE METHOD)	AUGUST
	Analyzed for 2009 Construction Season

SUMMARY OF TRAFFIC MODEL OUTPUT

SATURDAY SOUTHBOUND DIRECTION

TIME OF DAY	FLOWS AND CAPACITY IN VEH/HR						AVERAGE SPEEDS IN MPH			
	MAIN ROUTE		SITE CAPA CITY	FLOW		AV.DEL PER VEH (MINS)	AVERAGE QUEUE (VEH)	MAIN ROUTE		SITE
	DEMAND FLOW	PCT HEAVY		MAIN ROUTE	'DIVER TED'			WITHOUT WORK ZONE	WITH WORK ZONE	
MID-1 AM	120	0.0	1500	120	0	0.43	0	66.1	52.8	45.0
1-2 AM	66	0.0	1500	66	0	0.43	0	66.3	53.0	45.2
2-3 AM	51	0.0	1500	51	0	0.43	0	66.3	53.1	45.3
3-4 AM	58	0.0	1500	58	0	0.43	0	66.3	53.1	45.3
4-5 AM	84	0.0	1500	84	0	0.43	0	66.2	53.0	45.1
5-6 AM	168	0.0	1500	168	0	0.44	0	66.1	52.7	44.8
6-7 AM	260	0.0	1500	260	0	0.45	0	65.9	52.4	44.5
7-8 AM	424	0.0	1500	424	0	0.46	0	65.6	51.8	43.8
8-9 AM	642	0.0	1500	642	0	0.48	0	65.2	51.0	43.0
9-10 AM	907	0.0	1500	907	0	0.51	0	64.7	50.2	42.0
10-11 AM	1228	0.0	1500	1228	0	0.67	0	64.1	46.5	37.6
11AM-NOON	1324	0.0	1500	1324	0	0.80	0	63.9	44.2	34.8
NOON-1PM	1225	0.0	1500	1225	0	0.67	0	64.1	46.6	37.7
1-2 PM	1061	0.0	1500	1061	0	0.52	0	64.4	49.7	41.5
2-3 PM	980	0.0	1500	980	0	0.52	0	64.6	49.9	41.7
3-4 PM	967	0.0	1500	967	0	0.52	0	64.6	50.0	41.8
4-5 PM	801	0.0	1500	801	0	0.50	0	64.9	50.5	42.4
5-6 PM	727	0.0	1500	727	0	0.49	0	65.0	50.7	42.7
6-7 PM	605	0.0	1500	605	0	0.48	0	65.3	51.2	43.1
7-8 PM	510	0.0	1500	510	0	0.47	0	65.5	51.5	43.5
8-9 PM	448	0.0	1500	448	0	0.47	0	65.6	51.7	43.7
9-10 PM	441	0.0	1500	441	0	0.47	0	65.6	51.7	43.7
10-11 PM	275	0.0	1500	275	0	0.45	0	65.9	52.3	44.4
11PM-MID	213	0.0	1500	213	0	0.44	0	66.0	52.5	44.6

----- SITE BREAKDOWN DELAYS -----

BREAKDOWN DURATION (MINS)	0
RANGE OF QUEUE DELAY - MIN (VEH-H) MAX	0.0
AV BREAKDOWNS PER DAY	0.00
AV QUEUE DELAY/DAY (VEH-H)	0.0
AV TOTAL DELAY/DAY (VEH-H)	0.0

----- SITE ACCIDENT DELAYS -----

BREAKDOWN DURATION (MINS)	0
RANGE OF QUEUE DELAY - MIN (VEH-H) MAX	0
AV BREAKDOWNS PER DAY	0
AV QUEUE DELAY/DAY (VEH-H)	0
AV TOTAL DELAY/DAY (VEH-H)	0

AVERAGE ACCIDENT NUMBERS (PIA/DAY)

MAIN ROUTE WITHOUT WORKS	0.0041
MAIN ROUTE WITH WORKS	0.0032
'DIVERSION'	0.0000

PIA: Personal Injury Accidents

IMPACTS ON ROAD USERS

ROAD USER COSTS PER DAY	\$1,929
CONGESTED HOURS PER DAY*	0

*Delays Exceeding User-Specified Maximum

**USH 51: CTH U TO STH 29 W (MARATHON COUNTY)
CONTINUOUS (24 HOUR) CLOSURE
NO DIVERSION ROUTE (MAX QUEUE METHOD)**

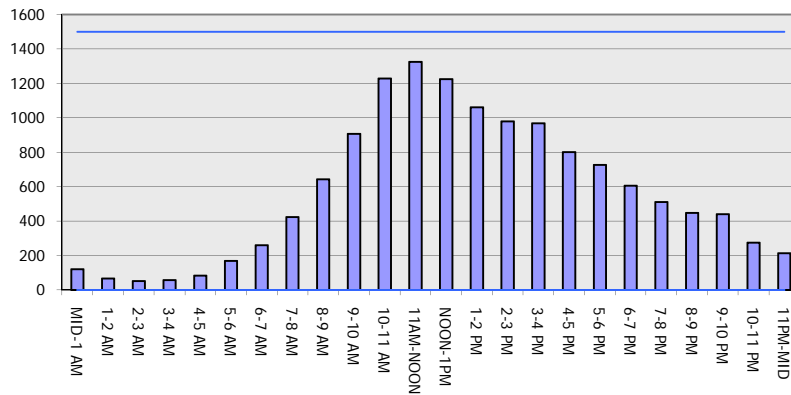
AUGUST

Analyzed for 2009
Construction Season

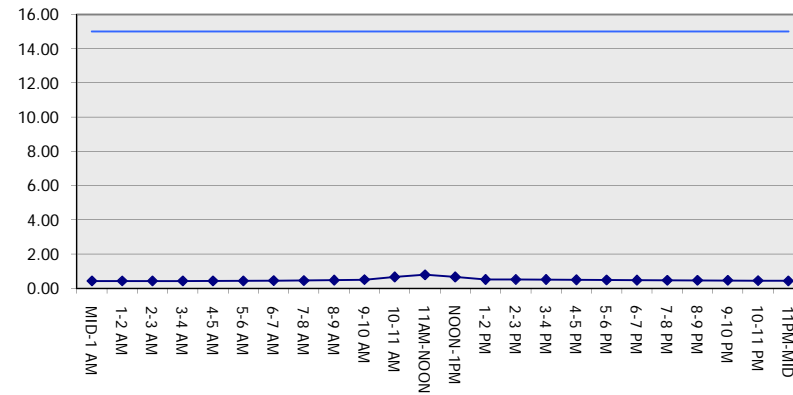
GRAPHICAL REPRESENTATION OF TRAFFIC MODEL INPUT AND OUTPUT

SATURDAY SOUTHBOUND DIRECTION

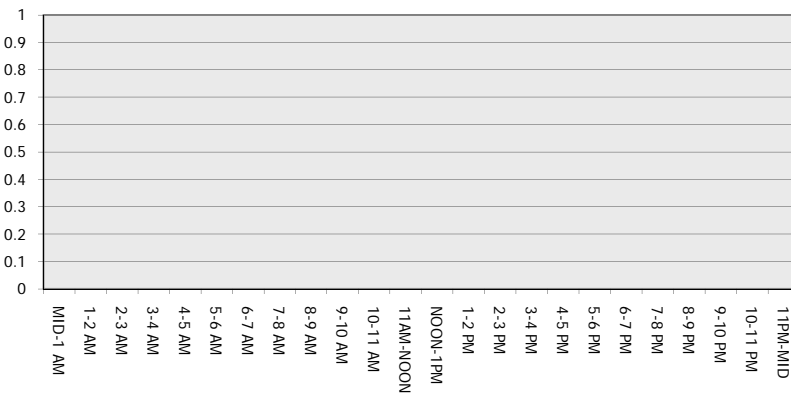
Main Route - Traffic Demand (Vehicles Per Hour)



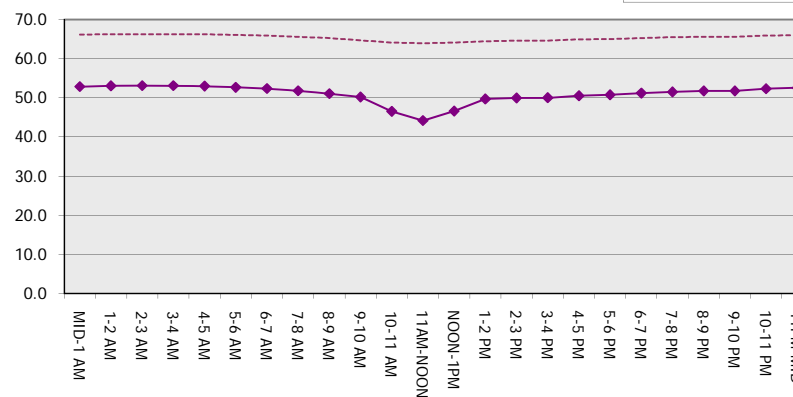
Main Route Average Delay Per Vehicle (Minutes)



Main Route - Average Queue Length (Vehicles)



Main Route - Average Speed (MPH)



USH 51: CTH U TO STH 29 W (MARATHON COUNTY) CONTINUOUS (24 HOUR) CLOSURE NO DIVERSION ROUTE (MAX QUEUE METHOD)	AUGUST
	Analyzed for 2009 Construction Season

SUMMARY OF TRAFFIC MODEL OUTPUT

SATURDAY NORTHBOUND DIRECTION

TIME OF DAY	FLOWS AND CAPACITY IN VEH/HR							AVERAGE SPEEDS IN MPH		
	MAIN ROUTE		SITE CAPA CITY	FLOW		AV.DEL PER VEH (MINS)	AVERAGE QUEUE (VEH)	MAIN ROUTE		SITE
	DEMAND FLOW	PCT HEAVY		MAIN ROUTE	'DIVER TED'			WITHOUT WORK ZONE	WITH WORK ZONE	
MID-1 AM	180	0.0	1500	180	0	0.44	0	66.1	52.7	44.8
1-2 AM	103	0.0	1500	103	0	0.43	0	66.2	52.9	45.1
2-3 AM	89	0.0	1500	89	0	0.43	0	66.2	53.0	45.1
3-4 AM	71	0.0	1500	71	0	0.43	0	66.3	53.0	45.2
4-5 AM	83	0.0	1500	83	0	0.43	0	66.2	53.0	45.1
5-6 AM	153	0.0	1500	153	0	0.44	0	66.1	52.7	44.9
6-7 AM	264	0.0	1500	264	0	0.45	0	65.9	52.4	44.4
7-8 AM	389	0.0	1500	389	0	0.46	0	65.6	51.9	43.9
8-9 AM	594	0.0	1500	594	0	0.48	0	65.3	51.2	43.2
9-10 AM	821	0.0	1500	821	0	0.50	0	64.8	50.4	42.3
10-11 AM	1059	0.0	1500	1059	0	0.52	0	64.4	49.7	41.5
11AM-NOON	1187	0.0	1500	1187	0	0.62	0	64.1	47.6	38.9
NOON-1PM	1246	0.0	1500	1246	0	0.70	0	64.1	46.1	37.1
1-2 PM	1181	0.0	1500	1181	0	0.61	0	64.2	47.8	39.1
2-3 PM	1070	0.0	1500	1070	0	0.53	0	64.4	49.7	41.4
3-4 PM	954	0.0	1500	954	0	0.51	0	64.6	50.0	41.9
4-5 PM	808	0.0	1500	808	0	0.50	0	64.9	50.5	42.4
5-6 PM	720	0.0	1500	720	0	0.49	0	65.0	50.8	42.7
6-7 PM	624	0.0	1500	624	0	0.48	0	65.2	51.1	43.0
7-8 PM	470	0.0	1500	470	0	0.47	0	65.5	51.6	43.6
8-9 PM	412	0.0	1500	412	0	0.46	0	65.6	51.9	43.8
9-10 PM	385	0.0	1500	385	0	0.46	0	65.6	51.9	44.0
10-11 PM	273	0.0	1500	273	0	0.45	0	65.9	52.3	44.4
11PM-MID	202	0.0	1500	202	0	0.44	0	66.0	52.5	44.6

----- SITE BREAKDOWN DELAYS -----	
BREAKDOWN DURATION (MINS)	0
RANGE OF QUEUE DELAY - MIN (VEH-H) MAX	0.0
AV BREAKDOWNS PER DAY	0.00
AV QUEUE DELAY/DAY (VEH-H)	0.0
AV TOTAL DELAY/DAY (VEH-H)	0.0

----- SITE ACCIDENT DELAYS -----	
BREAKDOWN DURATION (MINS)	0
RANGE OF QUEUE DELAY - MIN (VEH-H) MAX	0
AV BREAKDOWNS PER DAY	0
AV QUEUE DELAY/DAY (VEH-H)	0
AV TOTAL DELAY/DAY (VEH-H)	0

AVERAGE ACCIDENT NUMBERS (PIA/DAY)	
MAIN ROUTE WITHOUT WORKS	0.0040
MAIN ROUTE WITH WORKS	0.0032
'DIVERSION'	0.0000

PIA: Personal Injury Accidents

ECONOMIC IMPACT ON ROAD USERS	
ROAD USER COSTS PER DAY	\$1,819
CONGESTED HOURS PER DAY*	0

*Delays Exceeding User-Specified Maximum

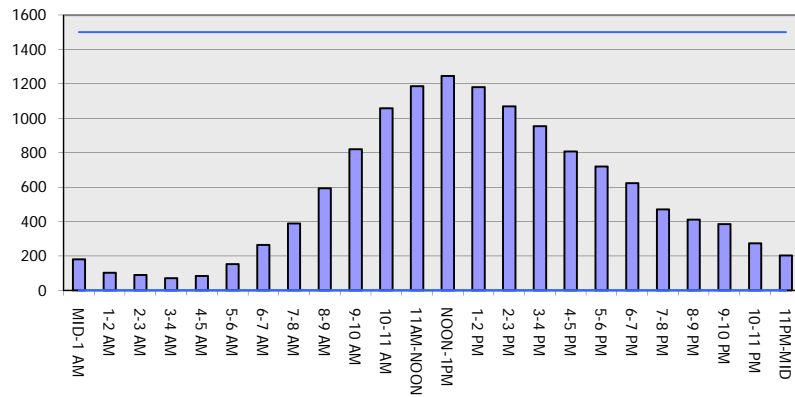
**USH 51: CTH U TO STH 29 W (MARATHON COUNTY)
CONTINUOUS (24 HOUR) CLOSURE
NO DIVERSION ROUTE (MAX QUEUE METHOD)**

AUGUST

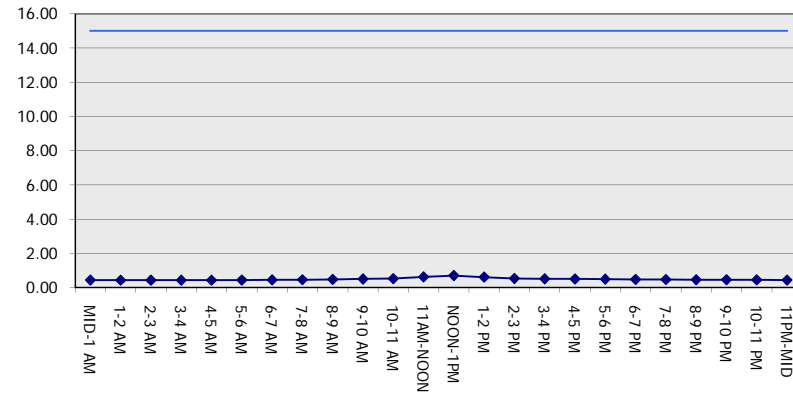
Analyzed for 2009
Construction Season

GRAPHICAL REPRESENTATION OF TRAFFIC MODEL INPUT AND OUTPUT
SATURDAY NORTHBOUND DIRECTION

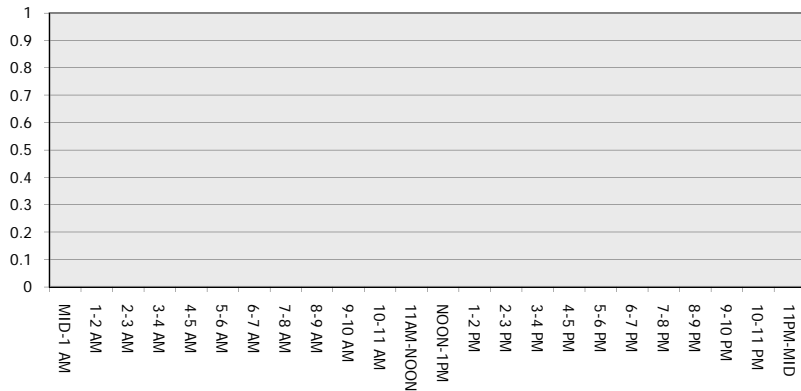
Main Route - Traffic Demand (Vehicles Per Hour)



Main Route Average Delay Per Vehicle (Minutes)



Main Route - Average Queue Length (Vehicles)



Main Route - Average Speed (MPH)

