

**USH 51: CTH U TO STH 29 W (MARATHON COUNTY)  
CONTINUOUS (24 HOUR) CLOSURE  
NO DIVERSION ROUTE (MAX QUEUE METHOD)**

**AUGUST**

Analyzed for 2009  
Construction Season

**SUMMARY OF TRAFFIC MODEL OUTPUT**

MON-THUR SOUTHBOUND DIRECTION

TIME OF DAY	FLOWS AND CAPACITY IN VEH/HR						AVERAGE SPEEDS IN MPH			
	MAIN ROUTE		SITE CAPA CITY	FLOW		AV.DEL PER VEH (MINS)	AVERAGE QUEUE (VEH)	MAIN ROUTE		SITE
	DEMAND FLOW	PCT HEAVY		MAIN ROUTE	'DIVER TED'			WITHOUT WORK ZONE	WITH WORK ZONE	
MID-1 AM	69	0.0	1500	69	0	0.43	0	66.3	53.0	45.2
1-2 AM	51	0.0	1500	51	0	0.43	0	66.3	53.1	45.3
2-3 AM	55	0.0	1500	55	0	0.43	0	66.3	53.1	45.3
3-4 AM	95	0.0	1500	95	0	0.43	0	66.2	52.9	45.1
4-5 AM	225	0.0	1500	225	0	0.44	0	66.0	52.5	44.6
5-6 AM	566	0.0	1500	566	0	0.48	0	65.3	51.3	43.3
6-7 AM	791	0.0	1500	791	0	0.50	0	64.9	50.5	42.4
7-8 AM	808	0.0	1500	808	0	0.50	0	64.9	50.5	42.4
8-9 AM	727	0.0	1500	727	0	0.49	0	65.0	50.7	42.7
9-10 AM	766	0.0	1500	766	0	0.50	0	65.0	50.6	42.5
10-11 AM	862	0.0	1500	862	0	0.51	0	64.8	50.3	42.2
11AM-NOON	917	0.0	1500	917	0	0.51	0	64.6	50.1	42.0
NOON-1PM	953	0.0	1500	953	0	0.51	0	64.6	50.1	41.9
1-2 PM	1012	0.0	1500	1012	0	0.52	0	64.5	49.8	41.6
2-3 PM	1106	0.0	1500	1106	0	0.53	0	64.3	49.6	41.3
3-4 PM	1214	0.0	1500	1214	0	0.65	0	64.1	46.9	38.0
4-5 PM	1304	0.0	1500	1304	0	0.77	0	64.0	44.6	35.4
5-6 PM	1026	0.0	1500	1026	0	0.52	0	64.5	49.8	41.6
6-7 PM	691	0.0	1500	691	0	0.49	0	65.1	50.9	42.8
7-8 PM	533	0.0	1500	533	0	0.47	0	65.4	51.4	43.4
8-9 PM	461	0.0	1500	461	0	0.47	0	65.5	51.7	43.7
9-10 PM	355	0.0	1500	355	0	0.46	0	65.7	52.0	44.1
10-11 PM	254	0.0	1500	254	0	0.45	0	65.9	52.4	44.5
11PM-MID	132	0.0	1500	132	0	0.44	0	66.1	52.8	45.0

**\*----- SITE BREAKDOWN DELAYS -----\***

BREAKDOWN DURATION (MINS)	0
RANGE OF QUEUE DELAY - MIN (VEH-H) MAX	0.0
AV BREAKDOWNS PER DAY	0.00
AV QUEUE DELAY/DAY (VEH-H)	0.0
AV TOTAL DELAY/DAY (VEH-H)	0.0

**\*----- SITE ACCIDENT DELAYS -----\***

BREAKDOWN DURATION (MINS)	0
RANGE OF QUEUE DELAY - MIN (VEH-H) MAX	0
AV BREAKDOWNS PER DAY	0
AV QUEUE DELAY/DAY (VEH-H)	0
AV TOTAL DELAY/DAY (VEH-H)	0

**AVERAGE ACCIDENT NUMBERS (PIA/DAY)**

MAIN ROUTE WITHOUT WORKS	0.0045
MAIN ROUTE WITH WORKS	0.0035
'DIVERSION'	0.0000

PIA: Personal Injury Accidents

**IMPACTS ON ROAD USERS**

ROAD USER COSTS PER DAY	\$1,605
CONGESTED HOURS PER DAY*	0

\*Delays Exceeding User-Specified Maximum

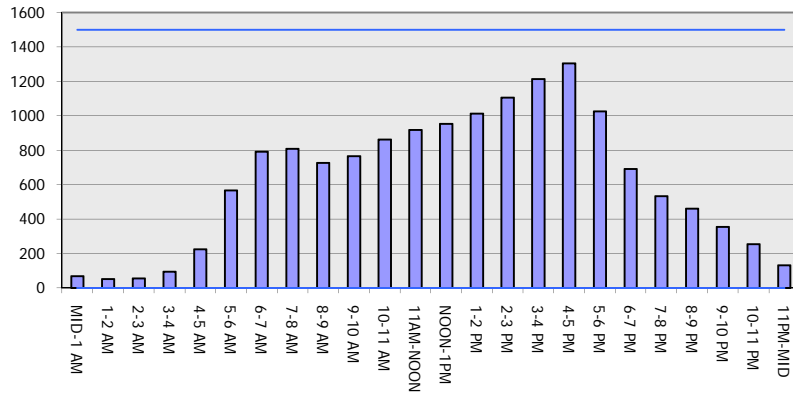
**USH 51: CTH U TO STH 29 W (MARATHON COUNTY)  
CONTINUOUS (24 HOUR) CLOSURE  
NO DIVERSION ROUTE (MAX QUEUE METHOD)**

**AUGUST**

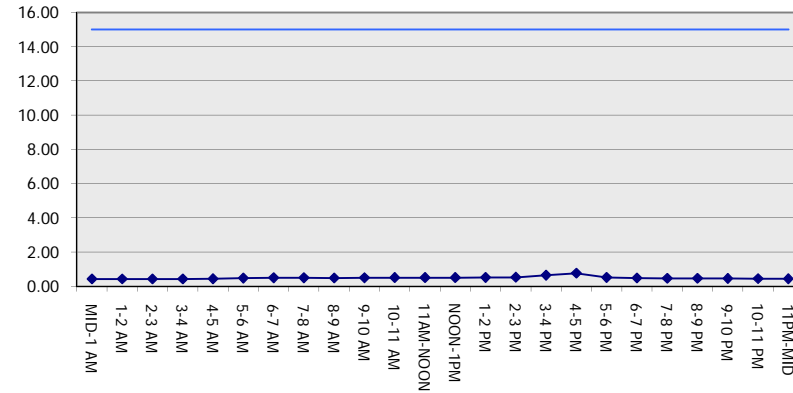
Analyzed for 2009  
Construction Season

**GRAPHICAL REPRESENTATION OF TRAFFIC MODEL INPUT AND OUTPUT**  
**MON-THUR SOUTHBOUND DIRECTION**

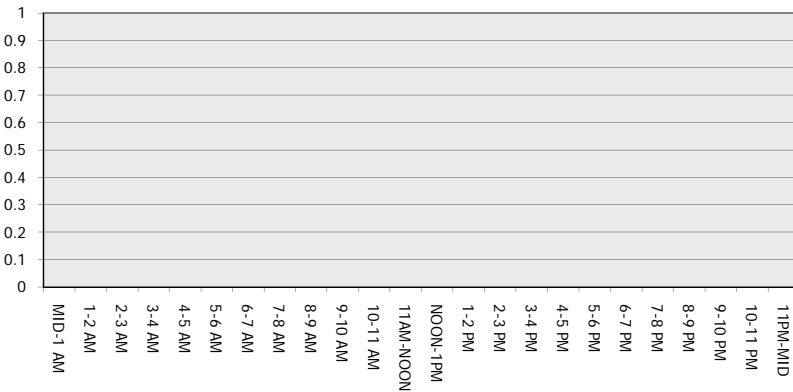
**Main Route - Traffic Demand (Vehicles Per Hour)**



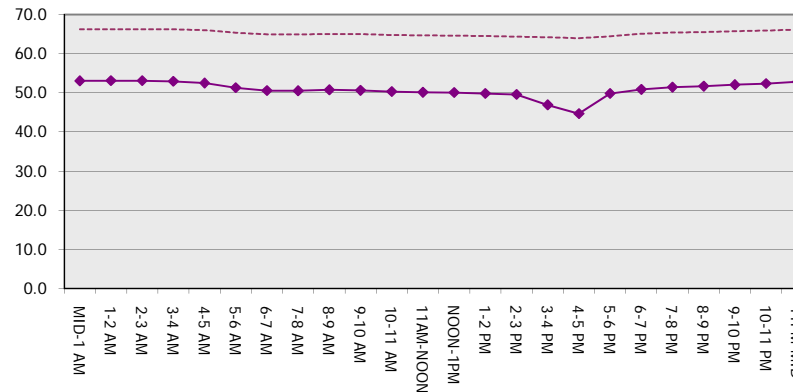
**Main Route Average Delay Per Vehicle (Minutes)**



**Main Route - Average Queue Length (Vehicles)**



**Main Route - Average Speed (MPH)**



<b>USH 51: CTH U TO STH 29 W (MARATHON COUNTY)                  CONTINUOUS (24 HOUR) CLOSURE                  NO DIVERSION ROUTE (MAX QUEUE METHOD)</b>	<b>AUGUST</b>
	Analyzed for 2009 Construction Season

**SUMMARY OF TRAFFIC MODEL OUTPUT**

MON-THUR                      NORTHBOUND DIRECTION

TIME OF DAY	FLOWS AND CAPACITY IN VEH/HR							AVERAGE SPEEDS IN MPH		
	MAIN ROUTE		SITE CAPA CITY	FLOW		AV.DEL PER VEH (MINS)	AVERAGE QUEUE (VEH)	MAIN ROUTE		SITE
	DEMAND FLOW	PCT HEAVY		MAIN ROUTE	'DIVER TED'			WITHOUT WORK ZONE	WITH WORK ZONE	
MID-1 AM	93	0.0	1500	93	0	0.43	0	66.2	53.0	45.1
1-2 AM	65	0.0	1500	65	0	0.43	0	66.3	53.0	45.2
2-3 AM	59	0.0	1500	59	0	0.43	0	66.3	53.1	45.3
3-4 AM	86	0.0	1500	86	0	0.43	0	66.2	53.0	45.1
4-5 AM	174	0.0	1500	174	0	0.44	0	66.1	52.7	44.8
5-6 AM	476	0.0	1500	476	0	0.47	0	65.5	51.6	43.6
6-7 AM	890	0.0	1500	890	0	0.51	0	64.7	50.2	42.0
7-8 AM	1018	0.0	1500	1018	0	0.52	0	64.5	49.8	41.6
8-9 AM	756	0.0	1500	756	0	0.50	0	65.0	50.7	42.5
9-10 AM	769	0.0	1500	769	0	0.50	0	65.0	50.6	42.5
10-11 AM	823	0.0	1500	823	0	0.50	0	64.8	50.4	42.3
11AM-NOON	846	0.0	1500	846	0	0.50	0	64.8	50.4	42.2
NOON-1PM	870	0.0	1500	870	0	0.51	0	64.8	50.3	42.2
1-2 PM	918	0.0	1500	918	0	0.51	0	64.6	50.1	42.0
2-3 PM	1075	0.0	1500	1075	0	0.53	0	64.4	49.6	41.4
3-4 PM	1097	0.0	1500	1097	0	0.53	0	64.3	49.6	41.4
4-5 PM	1195	0.0	1500	1195	0	0.63	0	64.1	47.4	38.6
5-6 PM	1034	0.0	1500	1034	0	0.52	0	64.5	49.7	41.5
6-7 PM	713	0.0	1500	713	0	0.49	0	65.1	50.8	42.7
7-8 PM	539	0.0	1500	539	0	0.47	0	65.4	51.4	43.3
8-9 PM	446	0.0	1500	446	0	0.47	0	65.6	51.7	43.7
9-10 PM	354	0.0	1500	354	0	0.46	0	65.7	52.0	44.1
10-11 PM	269	0.0	1500	269	0	0.45	0	65.9	52.4	44.4
11PM-MID	167	0.0	1500	167	0	0.44	0	66.1	52.7	44.8

*----- SITE BREAKDOWN DELAYS -----*	
BREAKDOWN DURATION (MINS)	0
RANGE OF QUEUE DELAY - MIN (VEH-H) MAX	0.0
AV BREAKDOWNS PER DAY	0.00
AV QUEUE DELAY/DAY (VEH-H)	0.0
AV TOTAL DELAY/DAY (VEH-H)	0.0

*----- SITE ACCIDENT DELAYS -----*	
BREAKDOWN DURATION (MINS)	0
RANGE OF QUEUE DELAY - MIN (VEH-H) MAX	0
AV BREAKDOWNS PER DAY	0
AV QUEUE DELAY/DAY (VEH-H)	0
AV TOTAL DELAY/DAY (VEH-H)	0

AVERAGE ACCIDENT NUMBERS (PIA/DAY)	
MAIN ROUTE WITHOUT WORKS	0.0045
MAIN ROUTE WITH WORKS	0.0035
'DIVERSION'	0.0000

PIA: Personal Injury Accidents

ECONOMIC IMPACT ON ROAD USERS	
ROAD USER COSTS PER DAY	\$1,512
CONGESTED HOURS PER DAY*	0

\*Delays Exceeding User-Specified Maximum

**USH 51: CTH U TO STH 29 W (MARATHON COUNTY)  
CONTINUOUS (24 HOUR) CLOSURE  
NO DIVERSION ROUTE (MAX QUEUE METHOD)**

**AUGUST**  
Analyzed for 2009  
Construction Season

**GRAPHICAL REPRESENTATION OF TRAFFIC MODEL INPUT AND OUTPUT**  
**MON-THUR NORTHBOUND DIRECTION**

