

**USH 51: CTH U TO STH 29 W (MARATHON COUNTY)  
CONTINUOUS (24 HOUR) CLOSURE  
NO DIVERSION ROUTE (MAX QUEUE METHOD)**

**MAY**  
Analyzed for 2009  
Construction Season

**SUMMARY OF TRAFFIC MODEL OUTPUT**  
SATURDAY SOUTHBOUND DIRECTION

TIME OF DAY	FLOWS AND CAPACITY IN VEH/HR						AVERAGE SPEEDS IN MPH			
	MAIN ROUTE		SITE CAPA CITY	FLOW		AV.DEL PER VEH (MINS)	AVERAGE QUEUE (VEH)	MAIN ROUTE		SITE
	DEMAND FLOW	PCT HEAVY		MAIN ROUTE	'DIVER TED'			WITHOUT WORK ZONE	WITH WORK ZONE	
MID-1 AM	123	0.0	1500	123	0	0.43	0	66.1	52.8	45.0
1-2 AM	58	0.0	1500	58	0	0.43	0	66.3	53.1	45.3
2-3 AM	54	0.0	1500	54	0	0.43	0	66.3	53.1	45.3
3-4 AM	71	0.0	1500	71	0	0.43	0	66.3	53.0	45.2
4-5 AM	72	0.0	1500	72	0	0.43	0	66.3	53.0	45.2
5-6 AM	146	0.0	1500	146	0	0.44	0	66.1	52.8	44.9
6-7 AM	267	0.0	1500	267	0	0.45	0	65.9	52.4	44.4
7-8 AM	397	0.0	1500	397	0	0.46	0	65.6	51.9	43.9
8-9 AM	602	0.0	1500	602	0	0.48	0	65.3	51.2	43.1
9-10 AM	667	0.0	1500	667	0	0.49	0	65.1	51.0	42.8
10-11 AM	806	0.0	1500	806	0	0.50	0	64.9	50.5	42.4
11AM-NOON	795	0.0	1500	795	0	0.50	0	64.9	50.5	42.4
NOON-1PM	836	0.0	1500	836	0	0.50	0	64.8	50.4	42.3
1-2 PM	817	0.0	1500	817	0	0.50	0	64.8	50.5	42.4
2-3 PM	718	0.0	1500	718	0	0.49	0	65.0	50.8	42.7
3-4 PM	792	0.0	1500	792	0	0.50	0	64.9	50.5	42.4
4-5 PM	694	0.0	1500	694	0	0.49	0	65.1	50.9	42.8
5-6 PM	626	0.0	1500	626	0	0.48	0	65.2	51.1	43.0
6-7 PM	558	0.0	1500	558	0	0.48	0	65.3	51.4	43.3
7-8 PM	485	0.0	1500	485	0	0.47	0	65.5	51.6	43.6
8-9 PM	390	0.0	1500	390	0	0.46	0	65.6	51.9	43.9
9-10 PM	321	0.0	1500	321	0	0.45	0	65.8	52.2	44.2
10-11 PM	225	0.0	1500	225	0	0.44	0	66.0	52.5	44.6
11PM-MID	136	0.0	1500	136	0	0.44	0	66.1	52.8	45.0

**\*----- SITE BREAKDOWN DELAYS -----\***

BREAKDOWN DURATION (MINS)	0
RANGE OF QUEUE DELAY - MIN (VEH-H) MAX	0.0
AV BREAKDOWNS PER DAY	0.00
AV QUEUE DELAY/DAY (VEH-H)	0.0
AV TOTAL DELAY/DAY (VEH-H)	0.0

**\*----- SITE ACCIDENT DELAYS -----\***

BREAKDOWN DURATION (MINS)	0
RANGE OF QUEUE DELAY - MIN (VEH-H) MAX	0
AV BREAKDOWNS PER DAY	0
AV QUEUE DELAY/DAY (VEH-H)	0
AV TOTAL DELAY/DAY (VEH-H)	0

**AVERAGE ACCIDENT NUMBERS (PIA/DAY)**

MAIN ROUTE WITHOUT WORKS	0.0032
MAIN ROUTE WITH WORKS	0.0025
'DIVERSION'	0.0000

PIA: Personal Injury Accidents

**IMPACTS ON ROAD USERS**

ROAD USER COSTS PER DAY	\$1,297
CONGESTED HOURS PER DAY*	0

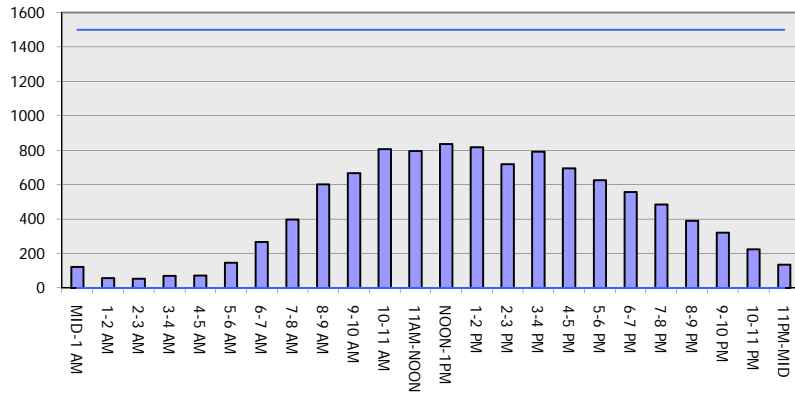
\*Delays Exceeding User-Specified Maximum

**USH 51: CTH U TO STH 29 W (MARATHON COUNTY)  
CONTINUOUS (24 HOUR) CLOSURE  
NO DIVERSION ROUTE (MAX QUEUE METHOD)**

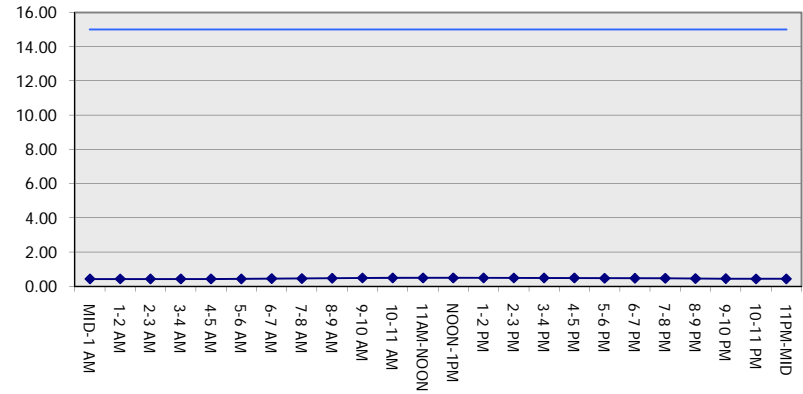
**MAY**  
Analyzed for 2009  
Construction Season

**GRAPHICAL REPRESENTATION OF TRAFFIC MODEL INPUT AND OUTPUT**  
**SATURDAY SOUTHBOUND DIRECTION**

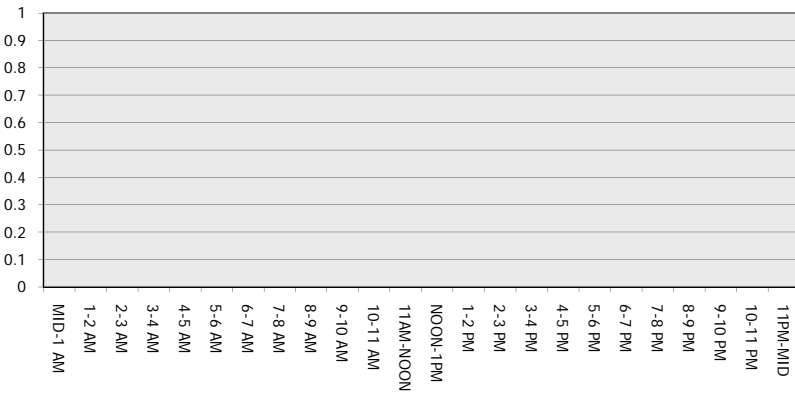
**Main Route - Traffic Demand (Vehicles Per Hour)**



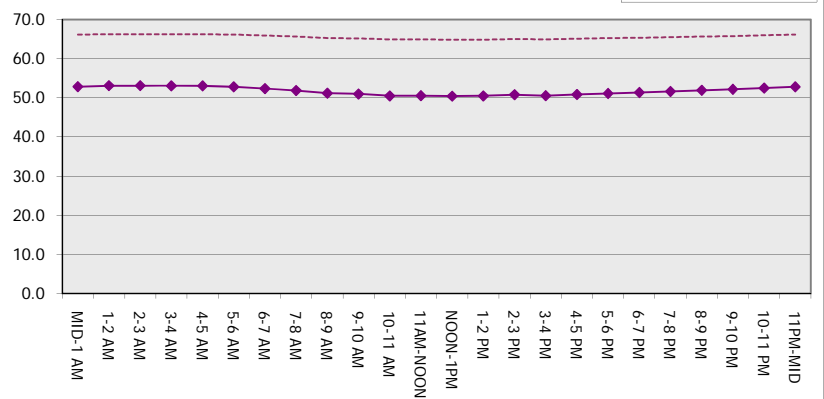
**Main Route Average Delay Per Vehicle (Minutes)**



**Main Route - Average Queue Length (Vehicles)**



**Main Route - Average Speed (MPH)**



<b>USH 51: CTH U TO STH 29 W (MARATHON COUNTY)                  CONTINUOUS (24 HOUR) CLOSURE                  NO DIVERSION ROUTE (MAX QUEUE METHOD)</b>	<b>MAY</b>
	Analyzed for 2009 Construction Season

**SUMMARY OF TRAFFIC MODEL OUTPUT**

**SATURDAY NORTHBOUND DIRECTION**

TIME OF DAY	FLOWS AND CAPACITY IN VEH/HR						AVERAGE SPEEDS IN MPH			
	MAIN ROUTE		SITE CAPA CITY	FLOW		AV.DEL PER VEH (MINS)	AVERAGE QUEUE (VEH)	MAIN ROUTE		SITE
	DEMAND FLOW	PCT HEAVY		MAIN ROUTE	'DIVER TED'			WITHOUT WORK ZONE	WITH WORK ZONE	
MID-1 AM	216	0.0	1500	216	0	0.44	0	66.0	52.5	44.6
1-2 AM	116	0.0	1500	116	0	0.43	0	66.2	52.8	45.0
2-3 AM	95	0.0	1500	95	0	0.43	0	66.2	52.9	45.1
3-4 AM	84	0.0	1500	84	0	0.43	0	66.2	53.0	45.1
4-5 AM	75	0.0	1500	75	0	0.43	0	66.3	53.0	45.2
5-6 AM	158	0.0	1500	158	0	0.44	0	66.1	52.7	44.8
6-7 AM	291	0.0	1500	291	0	0.45	0	65.8	52.2	44.3
7-8 AM	485	0.0	1500	485	0	0.47	0	65.5	51.6	43.6
8-9 AM	679	0.0	1500	679	0	0.49	0	65.1	50.9	42.8
9-10 AM	873	0.0	1500	873	0	0.51	0	64.8	50.3	42.1
10-11 AM	1012	0.0	1500	1012	0	0.52	0	64.5	49.8	41.6
11AM-NOON	988	0.0	1500	988	0	0.52	0	64.5	49.9	41.7
NOON-1PM	921	0.0	1500	921	0	0.51	0	64.6	50.1	42.0
1-2 PM	855	0.0	1500	855	0	0.51	0	64.8	50.4	42.2
2-3 PM	826	0.0	1500	826	0	0.50	0	64.8	50.4	42.3
3-4 PM	822	0.0	1500	822	0	0.50	0	64.8	50.4	42.3
4-5 PM	739	0.0	1500	739	0	0.49	0	65.0	50.7	42.6
5-6 PM	668	0.0	1500	668	0	0.49	0	65.1	51.0	42.8
6-7 PM	599	0.0	1500	599	0	0.48	0	65.3	51.2	43.2
7-8 PM	486	0.0	1500	486	0	0.47	0	65.5	51.5	43.5
8-9 PM	396	0.0	1500	396	0	0.46	0	65.6	51.9	43.9
9-10 PM	366	0.0	1500	366	0	0.46	0	65.7	52.0	44.0
10-11 PM	257	0.0	1500	257	0	0.45	0	65.9	52.4	44.5
11PM-MID	200	0.0	1500	200	0	0.44	0	66.0	52.5	44.7

*----- SITE BREAKDOWN DELAYS -----*	
BREAKDOWN DURATION (MINS)	0
RANGE OF QUEUE DELAY - MIN (VEH-H) MAX	0.0
AV BREAKDOWNS PER DAY	0.00
AV QUEUE DELAY/DAY (VEH-H)	0.0
AV TOTAL DELAY/DAY (VEH-H)	0.0

*----- SITE ACCIDENT DELAYS -----*	
BREAKDOWN DURATION (MINS)	0
RANGE OF QUEUE DELAY - MIN (VEH-H) MAX	0
AV BREAKDOWNS PER DAY	0
AV QUEUE DELAY/DAY (VEH-H)	0
AV TOTAL DELAY/DAY (VEH-H)	0

AVERAGE ACCIDENT NUMBERS (PIA/DAY)	
MAIN ROUTE WITHOUT WORKS	0.0037
MAIN ROUTE WITH WORKS	0.0029
'DIVERSION'	0.0000

PIA: Personal Injury Accidents

ECONOMIC IMPACT ON ROAD USERS	
ROAD USER COSTS PER DAY	\$1,512
CONGESTED HOURS PER DAY*	0

\*Delays Exceeding User-Specified Maximum

**USH 51: CTH U TO STH 29 W (MARATHON COUNTY)  
CONTINUOUS (24 HOUR) CLOSURE  
NO DIVERSION ROUTE (MAX QUEUE METHOD)**

**MAY**  
Analyzed for 2009  
Construction Season

**GRAPHICAL REPRESENTATION OF TRAFFIC MODEL INPUT AND OUTPUT**  
**SATURDAY NORTHBOUND DIRECTION**

