

USH 51: CTH U TO STH 29 W (MARATHON COUNTY) CONTINUOUS (24 HOUR) CLOSURE NO DIVERSION ROUTE (MAX QUEUE METHOD)	MAY
	Analyzed for 2009 Construction Season

SUMMARY OF TRAFFIC MODEL OUTPUT

MON-THUR SOUTHBOUND DIRECTION

TIME OF DAY	FLOWS AND CAPACITY IN VEH/HR						AVERAGE SPEEDS IN MPH			
	MAIN ROUTE		SITE CAPA CITY	FLOW		AV.DEL PER VEH (MINS)	AVERAGE QUEUE (VEH)	MAIN ROUTE		SITE
	DEMAND FLOW	PCT HEAVY		MAIN ROUTE	'DIVER TED'			WITHOUT WORK ZONE	WITH WORK ZONE	
MID-1 AM	64	0.0	1500	64	0	0.43	0	66.3	53.0	45.2
1-2 AM	45	0.0	1500	45	0	0.43	0	66.3	53.1	45.3
2-3 AM	47	0.0	1500	47	0	0.43	0	66.3	53.1	45.3
3-4 AM	83	0.0	1500	83	0	0.43	0	66.2	53.0	45.1
4-5 AM	187	0.0	1500	187	0	0.44	0	66.0	52.6	44.7
5-6 AM	457	0.0	1500	457	0	0.47	0	65.5	51.7	43.7
6-7 AM	792	0.0	1500	792	0	0.50	0	64.9	50.5	42.4
7-8 AM	801	0.0	1500	801	0	0.50	0	64.9	50.5	42.4
8-9 AM	708	0.0	1500	708	0	0.49	0	65.1	50.8	42.7
9-10 AM	753	0.0	1500	753	0	0.50	0	65.0	50.7	42.5
10-11 AM	826	0.0	1500	826	0	0.50	0	64.8	50.4	42.3
11AM-NOON	881	0.0	1500	881	0	0.51	0	64.8	50.2	42.1
NOON-1PM	920	0.0	1500	920	0	0.51	0	64.6	50.1	42.0
1-2 PM	964	0.0	1500	964	0	0.52	0	64.6	50.0	41.8
2-3 PM	1085	0.0	1500	1085	0	0.53	0	64.3	49.6	41.4
3-4 PM	1227	0.0	1500	1227	0	0.67	0	64.1	46.5	37.6
4-5 PM	1237	0.0	1500	1237	0	0.69	0	64.1	46.3	37.3
5-6 PM	1046	0.0	1500	1046	0	0.52	0	64.5	49.7	41.5
6-7 PM	662	0.0	1500	662	0	0.49	0	65.1	51.0	42.9
7-8 PM	530	0.0	1500	530	0	0.47	0	65.4	51.4	43.4
8-9 PM	417	0.0	1500	417	0	0.46	0	65.6	51.8	43.8
9-10 PM	288	0.0	1500	288	0	0.45	0	65.8	52.2	44.3
10-11 PM	212	0.0	1500	212	0	0.44	0	66.0	52.5	44.6
11PM-MID	106	0.0	1500	106	0	0.43	0	66.2	52.9	45.1

----- SITE BREAKDOWN DELAYS -----

BREAKDOWN DURATION (MINS)	0
RANGE OF QUEUE DELAY - MIN (VEH-H) MAX	0.0
AV BREAKDOWNS PER DAY	0.00
AV QUEUE DELAY/DAY (VEH-H)	0.0
AV TOTAL DELAY/DAY (VEH-H)	0.0

----- SITE ACCIDENT DELAYS -----

BREAKDOWN DURATION (MINS)	0
RANGE OF QUEUE DELAY - MIN (VEH-H) MAX	0
AV BREAKDOWNS PER DAY	0
AV QUEUE DELAY/DAY (VEH-H)	0
AV TOTAL DELAY/DAY (VEH-H)	0

AVERAGE ACCIDENT NUMBERS (PIA/DAY)

MAIN ROUTE WITHOUT WORKS	0.0043
MAIN ROUTE WITH WORKS	0.0034
'DIVERSION'	0.0000

PIA: Personal Injury Accidents

IMPACTS ON ROAD USERS

ROAD USER COSTS PER DAY	\$1,517
CONGESTED HOURS PER DAY*	0

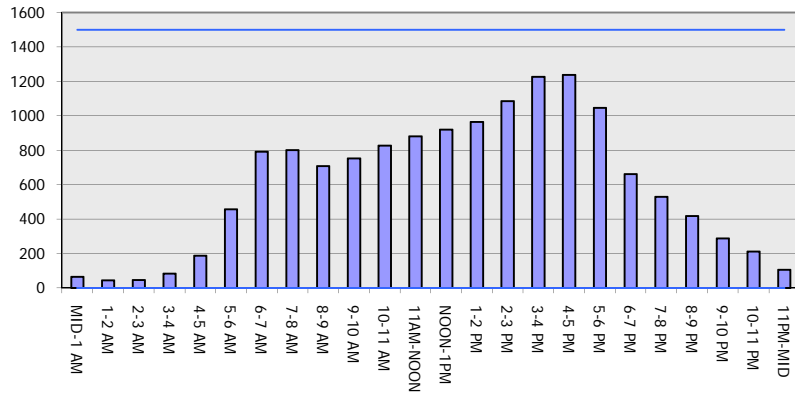
*Delays Exceeding User-Specified Maximum

**USH 51: CTH U TO STH 29 W (MARATHON COUNTY)
CONTINUOUS (24 HOUR) CLOSURE
NO DIVERSION ROUTE (MAX QUEUE METHOD)**

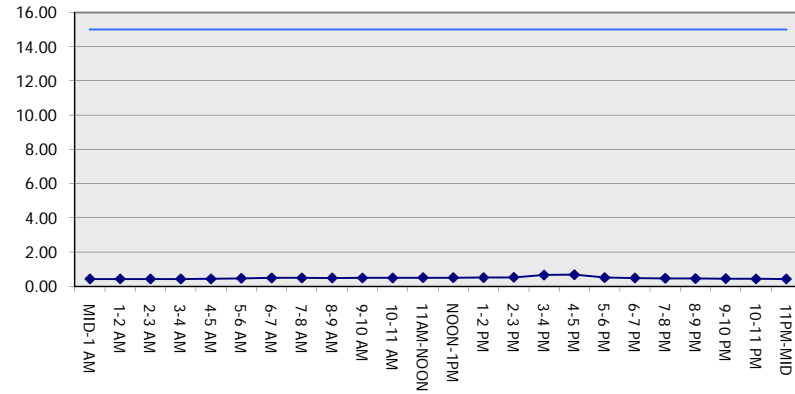
MAY
Analyzed for 2009
Construction Season

GRAPHICAL REPRESENTATION OF TRAFFIC MODEL INPUT AND OUTPUT
MON-THUR SOUTHBOUND DIRECTION

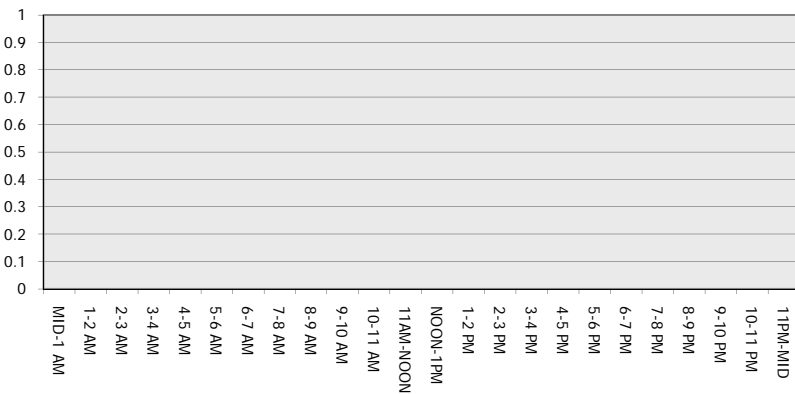
Main Route - Traffic Demand (Vehicles Per Hour)



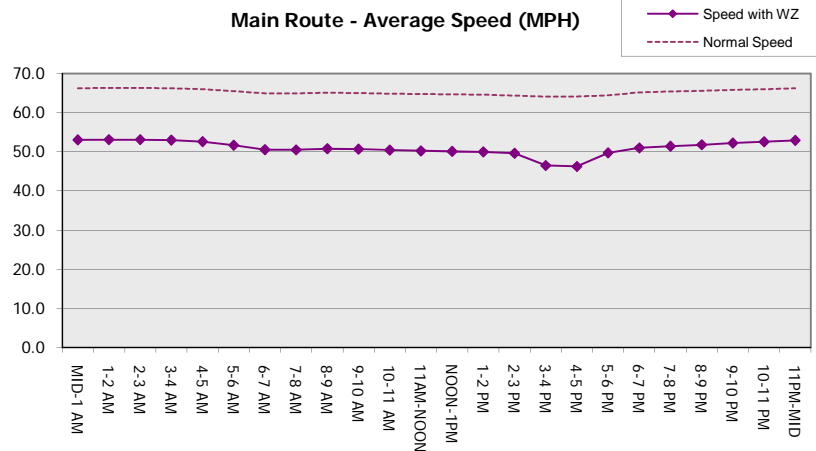
Main Route Average Delay Per Vehicle (Minutes)



Main Route - Average Queue Length (Vehicles)



Main Route - Average Speed (MPH)



USH 51: CTH U TO STH 29 W (MARATHON COUNTY) CONTINUOUS (24 HOUR) CLOSURE NO DIVERSION ROUTE (MAX QUEUE METHOD)	MAY
	Analyzed for 2009 Construction Season

SUMMARY OF TRAFFIC MODEL OUTPUT

MON-THUR NORTHBOUND DIRECTION

TIME OF DAY	FLOWS AND CAPACITY IN VEH/HR							AVERAGE SPEEDS IN MPH		
	MAIN ROUTE		SITE CAPA CITY	FLOW		AV.DEL PER VEH (MINS)	AVERAGE QUEUE (VEH)	MAIN ROUTE		SITE
	DEMAND FLOW	PCT HEAVY		MAIN ROUTE	'DIVER TED'			WITHOUT WORK ZONE	WITH WORK ZONE	
MID-1 AM	86	0.0	1500	86	0	0.43	0	66.2	53.0	45.1
1-2 AM	56	0.0	1500	56	0	0.43	0	66.3	53.1	45.3
2-3 AM	53	0.0	1500	53	0	0.43	0	66.3	53.1	45.3
3-4 AM	73	0.0	1500	73	0	0.43	0	66.3	53.0	45.2
4-5 AM	145	0.0	1500	145	0	0.44	0	66.1	52.8	44.9
5-6 AM	405	0.0	1500	405	0	0.46	0	65.6	51.9	43.9
6-7 AM	804	0.0	1500	804	0	0.50	0	64.9	50.5	42.4
7-8 AM	945	0.0	1500	945	0	0.51	0	64.6	50.1	41.9
8-9 AM	686	0.0	1500	686	0	0.49	0	65.1	50.9	42.8
9-10 AM	668	0.0	1500	668	0	0.49	0	65.1	51.0	42.8
10-11 AM	690	0.0	1500	690	0	0.49	0	65.1	50.9	42.8
11AM-NOON	723	0.0	1500	723	0	0.49	0	65.0	50.8	42.7
NOON-1PM	744	0.0	1500	744	0	0.49	0	65.0	50.7	42.6
1-2 PM	795	0.0	1500	795	0	0.50	0	64.9	50.5	42.4
2-3 PM	876	0.0	1500	876	0	0.51	0	64.8	50.3	42.1
3-4 PM	1022	0.0	1500	1022	0	0.52	0	64.5	49.8	41.6
4-5 PM	1036	0.0	1500	1036	0	0.52	0	64.5	49.7	41.5
5-6 PM	908	0.0	1500	908	0	0.51	0	64.7	50.2	42.0
6-7 PM	627	0.0	1500	627	0	0.48	0	65.2	51.1	43.0
7-8 PM	487	0.0	1500	487	0	0.47	0	65.5	51.5	43.5
8-9 PM	417	0.0	1500	417	0	0.46	0	65.6	51.8	43.8
9-10 PM	315	0.0	1500	315	0	0.45	0	65.8	52.2	44.2
10-11 PM	218	0.0	1500	218	0	0.44	0	66.0	52.5	44.6
11PM-MID	144	0.0	1500	144	0	0.44	0	66.1	52.8	44.9

----- SITE BREAKDOWN DELAYS -----	
BREAKDOWN DURATION (MINS)	0
RANGE OF QUEUE DELAY - MIN (VEH-H) MAX	0.0
AV BREAKDOWNS PER DAY	0.00
AV QUEUE DELAY/DAY (VEH-H)	0.0
AV TOTAL DELAY/DAY (VEH-H)	0.0

----- SITE ACCIDENT DELAYS -----	
BREAKDOWN DURATION (MINS)	0
RANGE OF QUEUE DELAY - MIN (VEH-H) MAX	0
AV BREAKDOWNS PER DAY	0
AV QUEUE DELAY/DAY (VEH-H)	0
AV TOTAL DELAY/DAY (VEH-H)	0

AVERAGE ACCIDENT NUMBERS (PIA/DAY)	
MAIN ROUTE WITHOUT WORKS	0.0039
MAIN ROUTE WITH WORKS	0.0031
'DIVERSION'	0.0000

PIA: Personal Injury Accidents

ECONOMIC IMPACT ON ROAD USERS	
ROAD USER COSTS PER DAY	\$1,275
CONGESTED HOURS PER DAY*	0

*Delays Exceeding User-Specified Maximum

**USH 51: CTH U TO STH 29 W (MARATHON COUNTY)
CONTINUOUS (24 HOUR) CLOSURE
NO DIVERSION ROUTE (MAX QUEUE METHOD)**

MAY
Analyzed for 2009
Construction Season

GRAPHICAL REPRESENTATION OF TRAFFIC MODEL INPUT AND OUTPUT
MON-THUR NORTHBOUND DIRECTION

