

**USH 51: STH 17/64 TO CTH U (MARATHON AND LINCOLN COUNTIES)  
CONTINUOUS (24 HOUR) CLOSURE  
DIVERSION ROUTE: CTH WW - STH 17/64**

**AUGUST**  
Analyzed for 2009  
Construction Season

**SUMMARY OF TRAFFIC MODEL OUTPUT**  
**FRIDAY SOUTHBOUND DIRECTION**

TIME OF DAY	FLOWS AND CAPACITY IN VEH/HR							AVERAGE SPEEDS IN MPH							
	MAIN ROUTE		ALTERNATE ROUTE		SITE CAPA CITY	FLOW MAIN ROUTE	FLOW DIVER -TING	TOTAL DIVN FLOW	AV.DEL PER VEH (MINS)	AVERAGE QUEUE (VEH)	MAIN ROUTE		ALTERNATE ROUTE		
	DEMAND FLOW	PCT HEAVY	NORMAL FLOW	PCT HEAVY							WITHOUT WORK ZN	WITH WORK ZN	SITE	WITHOUT WORK ZN	WITH WORK ZN
MID-1 AM	31	0.0	4	0.0	1500	31	0	4	0.43	0	66.3	63.6	45.4	44.0	44.0
1-2 AM	23	0.0	3	0.0	1500	23	0	3	0.42	0	66.3	63.7	45.4	44.0	44.0
2-3 AM	24	0.0	3	0.0	1500	24	0	3	0.42	0	66.3	63.6	45.4	44.0	44.0
3-4 AM	51	0.0	6	0.0	1500	51	0	6	0.43	0	66.3	63.6	45.3	44.0	44.0
4-5 AM	113	0.0	15	0.0	1500	113	0	15	0.43	0	66.2	63.4	45.0	43.8	43.8
5-6 AM	273	0.0	36	0.0	1500	273	0	36	0.45	0	65.9	63.0	44.4	43.6	43.6
6-7 AM	486	0.0	64	0.0	1500	486	0	64	0.47	0	65.5	62.5	43.5	43.2	43.2
7-8 AM	614	0.0	81	0.0	1500	614	0	81	0.48	0	65.3	62.3	43.1	42.9	42.9
8-9 AM	568	0.0	75	0.0	1500	568	0	75	0.48	0	65.3	62.3	43.2	43.0	43.0
9-10 AM	672	0.0	89	0.0	1500	672	0	89	0.49	0	65.1	62.2	42.8	42.8	42.8
10-11 AM	785	0.0	103	0.0	1500	785	0	103	0.50	0	64.9	61.9	42.4	42.6	42.6
11A-NOON	856	0.0	112	0.0	1500	856	0	112	0.51	0	64.8	61.7	42.2	42.4	42.4
NOON-1PM	845	0.0	111	0.0	1500	845	0	111	0.50	0	64.8	61.7	42.2	42.5	42.5
1-2 PM	853	0.0	112	0.0	1500	853	0	112	0.50	0	64.8	61.7	42.2	42.4	42.4
2-3 PM	795	0.0	105	0.0	1500	795	0	105	0.50	0	64.9	61.9	42.4	42.5	42.5
3-4 PM	770	0.0	102	0.0	1500	770	0	102	0.50	0	65.0	61.9	42.5	42.6	42.6
4-5 PM	723	0.0	95	0.0	1500	723	0	95	0.49	0	65.0	62.0	42.7	42.7	42.7
5-6 PM	636	0.0	83	0.0	1500	636	0	83	0.48	0	65.2	62.2	43.0	42.8	42.8
6-7 PM	475	0.0	63	0.0	1500	475	0	63	0.47	0	65.5	62.6	43.6	43.2	43.2
7-8 PM	345	0.0	45	0.0	1500	345	0	45	0.46	0	65.8	62.9	44.1	43.4	43.4
8-9 PM	245	0.0	32	0.0	1500	245	0	32	0.45	0	66.0	63.1	44.5	43.6	43.6
9-10 PM	185	0.0	24	0.0	1500	185	0	24	0.44	0	66.0	63.3	44.8	43.7	43.7
10-11 PM	142	0.0	18	0.0	1500	142	0	18	0.44	0	66.1	63.3	44.9	43.8	43.8
11PM-MID	67	0.0	9	0.0	1500	67	0	9	0.43	0	66.3	63.5	45.2	44.0	44.0

*----- SITE BREAKDOWN DELAYS -----*	
BREAKDOWN DURATION (MINS)	0
RANGE OF QUEUE DELAY - MIN	0.0
(VEH-H) MAX	0.0
RANGE OF DIVN DELAY - MIN	0.0
(VEH-H) MAX	0.0
AV BREAKDOWNS PER DAY	0.00
AV QUEUE DELAY/DAY (VEH-H)	0.0
AV DIVN DELAY/DAY (VEH-H)	0.0
AV TOTAL DELAY/DAY (VEH-H)	0.0

*----- SITE ACCIDENT DELAYS -----*	
ACCIDENT DURATION (MINS)	0
RANGE OF QUEUE DELAY - MIN	0.0
(VEH-H) MAX	0.0
RANGE OF DIVN DELAY - MIN	0.0
(VEH-H) MAX	0.0
AV ACCIDENTS PER DAY	0.00
AV QUEUE DELAY/DAY (VEH-H)	0.0
AV DIVN DELAY/DAY (VEH-H)	0.0
AV TOTAL DELAY/DAY (VEH-H)	0.0

AVERAGE ACCIDENT NUMBERS (PIA/DAY)		
MAIN ROUTE WITHOUT WORKS		0.0185
MAIN ROUTE WITH WORKS		0.0178
DIVERSION		0.0070

PIA: Personal Injury Accidents

IMPACTS ON ROAD USERS	
ROAD USER COSTS PER DAY ( DOLLARS)	\$1,171
CONGESTED HOURS PER DAY*	0

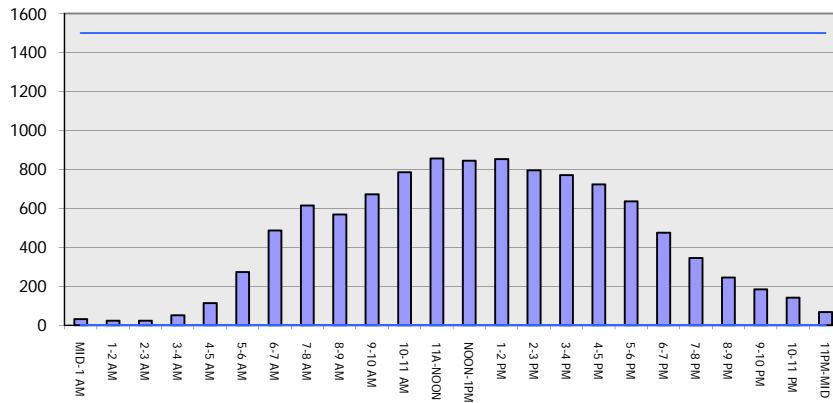
\*Delays Exceeding 15 Minutes

**USH 51: STH 17/64 TO CTH U (MARATHON AND LINCOLN COUNTIES)  
 CONTINUOUS (24 HOUR) CLOSURE  
 DIVERSION ROUTE: CTH WW - STH 17/64**

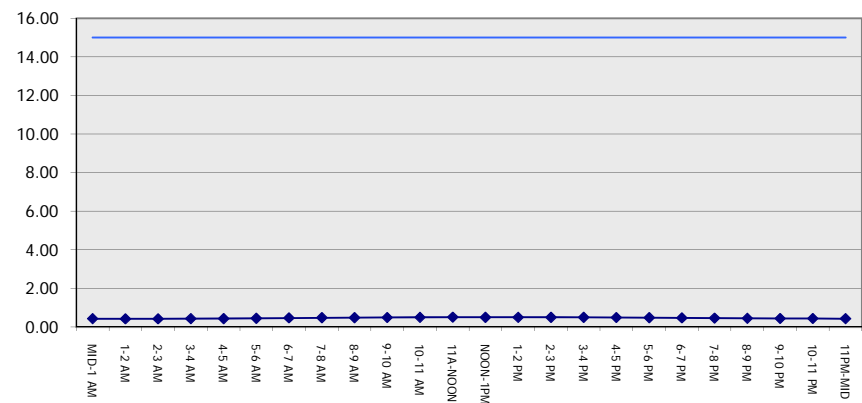
**AUGUST**  
 Analyzed for 2009  
 Construction Season

**GRAPHICAL REPRESENTATION OF TRAFFIC MODEL INPUT AND OUTPUT**  
**FRIDAY SOUTHBOUND DIRECTION**

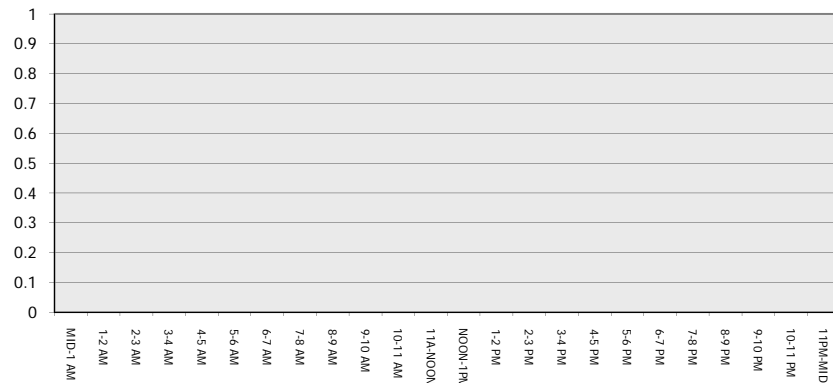
**Main Route - Traffic Demand (Vehicles Per Hour)**



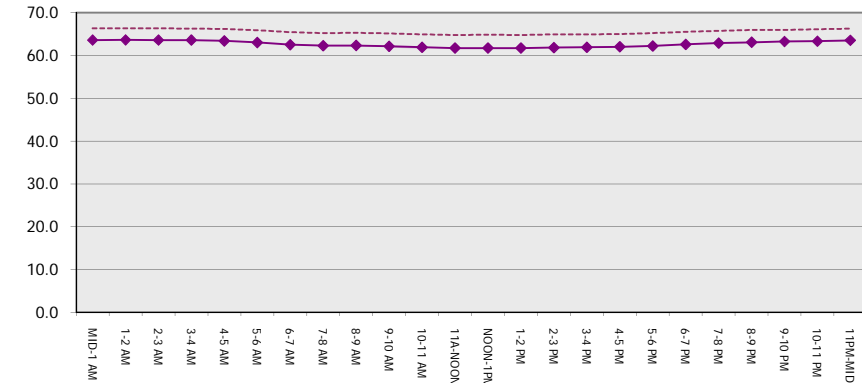
**Main Route Average Delay Per Vehicle (Minutes)**



**Main Route - Average Queue Length (Vehicles)**



**Main Route - Average Speed (MPH)**



<b>USH 51: STH 17/64 TO CTH U (MARATHON AND LINCOLN COUNTIES)</b> <b>CONTINUOUS (24 HOUR) CLOSURE</b> <b>DIVERSION ROUTE: CTH WW - STH 17/64</b>	<b>AUGUST</b>
	Analyzed for 2009 Construction Season

**SUMMARY OF TRAFFIC MODEL OUTPUT**

FRIDAY      NORTHBOUND DIRECTION

TIME OF DAY	FLOWS AND CAPACITY IN VEH/HR								AVERAGE SPEEDS IN MPH						
	MAIN		DIVERSION		SITE CAPA CITY	FLOW MAIN ROUTE	FLOW DIVER -TING	TOTAL DIVN FLOW	AV.DEL PER VEH (MINS)	AVERAGE QUEUE (VEH)	MAIN ROUTE		SITE	ALTERNATE ROUTE	
	DEMAND FLOW	PCT HEAVY	NORMAL FLOW	PCT HEAVY							WITHOUT WORK ZN	WITH WORK ZN		WITHOUT WORK ZN	WITH WORK ZN
MID-1 AM	131	0.0	17	0.0	1500	131	0	17	0.44	0	66.1	63.4	45.0	43.8	43.8
1-2 AM	74	0.0	10	0.0	1500	74	0	10	0.43	0	66.3	63.5	45.2	44.0	44.0
2-3 AM	51	0.0	6	0.0	1500	51	0	6	0.43	0	66.3	63.6	45.3	44.0	44.0
3-4 AM	45	0.0	5	0.0	1500	45	0	5	0.43	0	66.3	63.6	45.3	44.0	44.0
4-5 AM	74	0.0	10	0.0	1500	74	0	10	0.43	0	66.3	63.5	45.2	44.0	44.0
5-6 AM	130	0.0	17	0.0	1500	130	0	17	0.44	0	66.1	63.4	45.0	43.8	43.8
6-7 AM	275	0.0	36	0.0	1500	275	0	36	0.45	0	65.9	63.0	44.4	43.6	43.6
7-8 AM	404	0.0	53	0.0	1500	404	0	53	0.46	0	65.6	62.7	43.9	43.3	43.3
8-9 AM	474	0.0	63	0.0	1500	474	0	63	0.47	0	65.5	62.6	43.6	43.2	43.2
9-10 AM	669	0.0	88	0.0	1500	669	0	88	0.49	0	65.1	62.2	42.8	42.8	42.8
10-11 AM	895	0.0	118	0.0	1500	895	0	118	0.51	0	64.7	61.7	42.0	42.4	42.4
11A-NOON	1040	0.0	136	0.0	1500	1040	0	136	0.52	0	64.5	61.3	41.5	42.1	42.1
NOON-1PM	1098	0.0	144	0.0	1500	1098	0	144	0.53	0	64.3	61.2	41.4	42.0	42.0
1-2 PM	1283	0.0	169	0.0	1500	1283	0	169	0.74	0	64.0	59.7	36.0	41.6	41.6
2-3 PM	1439	0.0	189	0.0	1499	1439	0	189	0.95	0	63.7	58.4	32.1	41.3	41.3
3-4 PM	1681	0.0	220	0.0	1499	1681	0	220	3.75	79	63.3	46.5	30.8	40.9	40.9
4-5 PM	1777	0.0	233	0.0	1499	1618	160	393	10.79	267	63.1	31.1	30.8	40.7	38.3
5-6 PM	1700	0.0	224	0.0	1499	1471	229	453	11.53	285	63.2	30.1	30.8	40.8	37.4
6-7 PM	1453	0.0	191	0.0	1499	1413	40	231	9.44	227	63.7	33.3	30.8	41.3	40.7
7-8 PM	1245	0.0	163	0.0	1499	1245	0	163	3.22	75	64.1	48.8	34.6	41.7	41.7
8-9 PM	1073	0.0	140	0.0	1500	1073	0	140	0.53	0	64.4	61.2	41.4	42.0	42.0
9-10 PM	856	0.0	112	0.0	1500	856	0	112	0.51	0	64.8	61.7	42.2	42.4	42.4
10-11 PM	558	0.0	73	0.0	1500	558	0	73	0.48	0	65.3	62.4	43.3	43.0	43.0
11PM-MID	352	0.0	46	0.0	1500	352	0	46	0.46	0	65.7	62.8	44.1	43.4	43.4

*----- SITE BREAKDOWN DELAYS -----*	
BREAKDOWN DURATION (MINS)	0
RANGE OF QUEUE DELAY - MIN	0.0
(VEH-H) MAX	0.0
RANGE OF DIVN DELAY - MIN	0.0
(VEH-H) MAX	0.0
AV BREAKDOWNS PER DAY	0.00
AV QUEUE DELAY/DAY (VEH-H)	0.0
AV DIVN DELAY/DAY (VEH-H)	0.0
AV TOTAL DELAY/DAY (VEH-H)	0.0

*----- SITE ACCIDENT DELAYS -----*	
ACCIDENT DURATION (MINS)	0
RANGE OF QUEUE DELAY - MIN	0.0
(VEH-H) MAX	0.0
RANGE OF DIVN DELAY - MIN	0.0
(VEH-H) MAX	0.0
AV ACCIDENTS PER DAY	0.00
AV QUEUE DELAY/DAY (VEH-H)	0.0
AV DIVN DELAY/DAY (VEH-H)	0.0
AV TOTAL DELAY/DAY (VEH-H)	0.0

AVERAGE ACCIDENT NUMBERS (PIA/DAY)	
MAIN ROUTE WITHOUT WORKS	0.0329
MAIN ROUTE WITH WORKS	0.0309
DIVERSION	0.0146

PIA: Personal Injury Accidents

IMPACTS ON ROAD USERS	
ROAD USER COSTS PER DAY ( DOLLARS)	\$15,785
CONGESTED HOURS PER DAY*	0

\*Delays Exceeding 15 Minutes

**USH 51: STH 17/64 TO CTH U (MARATHON AND LINCOLN COUNTIES)**  
**CONTINUOUS (24 HOUR) CLOSURE**  
**DIVERSION ROUTE: CTH WW - STH 17/64**

**AUGUST**  
 Analyzed for 2009  
 Construction Season

**GRAPHICAL REPRESENTATION OF TRAFFIC MODEL INPUT AND OUTPUT**  
**FRIDAY NORTHBOUND DIRECTION**

