

USH 51: STH 17/64 TO CTH U (MARATHON AND LINCOLN COUNTIES) CONTINUOUS (24 HOUR) CLOSURE DIVERSION ROUTE: CTH WW - STH 17/64	MAY
	Analyzed for 2009 Construction Season

SUMMARY OF TRAFFIC MODEL OUTPUT

FRIDAY SOUTHBOUND DIRECTION

TIME OF DAY	FLOWS AND CAPACITY IN VEH/HR						AVERAGE SPEEDS IN MPH								
	MAIN ROUTE		ALTERNATE ROUTE		SITE CAPA CITY	FLOW MAIN ROUTE	FLOW DIVER -TING	TOTAL DIVN FLOW	AV.DEL PER VEH (MINS)	AVERAGE QUEUE (VEH)	MAIN ROUTE		ALTERNATE ROUTE		
	DEMAND FLOW	PCT HEAVY	NORMAL FLOW	PCT HEAVY							WITHOUT WORK ZN	WITH WORK ZN	SITE	WITHOUT WORK ZN	WITH WORK ZN
MID-1 AM	32	0.0	4	0.0	1500	32	0	4	0.43	0	66.3	63.6	45.4	44.0	44.0
1-2 AM	18	0.0	2	0.0	1500	18	0	2	0.42	0	66.3	63.7	45.5	44.0	44.0
2-3 AM	29	0.0	4	0.0	1500	29	0	4	0.43	0	66.3	63.6	45.4	44.0	44.0
3-4 AM	55	0.0	8	0.0	1500	55	0	8	0.43	0	66.3	63.5	45.3	44.0	44.0
4-5 AM	132	0.0	17	0.0	1500	132	0	17	0.44	0	66.1	63.3	45.0	43.8	43.8
5-6 AM	339	0.0	44	0.0	1500	339	0	44	0.46	0	65.8	62.9	44.2	43.4	43.4
6-7 AM	551	0.0	72	0.0	1500	551	0	72	0.48	0	65.3	62.4	43.3	43.0	43.0
7-8 AM	599	0.0	79	0.0	1500	599	0	79	0.48	0	65.3	62.3	43.2	42.9	42.9
8-9 AM	520	0.0	68	0.0	1500	520	0	68	0.47	0	65.4	62.5	43.4	43.1	43.1
9-10 AM	536	0.0	70	0.0	1500	536	0	70	0.47	0	65.4	62.5	43.3	43.0	43.0
10-11 AM	589	0.0	78	0.0	1500	589	0	78	0.48	0	65.3	62.3	43.2	43.0	43.0
11A-NOON	569	0.0	75	0.0	1500	569	0	75	0.48	0	65.3	62.3	43.2	43.0	43.0
NOON-1PM	558	0.0	73	0.0	1500	558	0	73	0.48	0	65.3	62.4	43.3	43.0	43.0
1-2 PM	579	0.0	76	0.0	1500	579	0	76	0.48	0	65.3	62.3	43.2	43.0	43.0
2-3 PM	557	0.0	73	0.0	1500	557	0	73	0.48	0	65.3	62.4	43.3	43.0	43.0
3-4 PM	647	0.0	85	0.0	1500	647	0	85	0.49	0	65.2	62.2	43.0	42.8	42.8
4-5 PM	599	0.0	79	0.0	1500	599	0	79	0.48	0	65.3	62.3	43.2	42.9	42.9
5-6 PM	511	0.0	67	0.0	1500	511	0	67	0.47	0	65.5	62.5	43.5	43.1	43.1
6-7 PM	354	0.0	46	0.0	1500	354	0	46	0.46	0	65.7	62.8	44.1	43.4	43.4
7-8 PM	224	0.0	29	0.0	1500	224	0	29	0.44	0	66.0	63.2	44.6	43.7	43.7
8-9 PM	171	0.0	23	0.0	1500	171	0	23	0.44	0	66.1	63.3	44.8	43.8	43.8
9-10 PM	140	0.0	18	0.0	1500	140	0	18	0.44	0	66.1	63.3	44.9	43.8	43.8
10-11 PM	90	0.0	12	0.0	1500	90	0	12	0.43	0	66.2	63.5	45.1	43.9	43.9
11PM-MID	47	0.0	6	0.0	1500	47	0	6	0.43	0	66.3	63.6	45.3	44.0	44.0

----- SITE BREAKDOWN DELAYS -----	
BREAKDOWN DURATION (MINS)	0
RANGE OF QUEUE DELAY - MIN	0.0
(VEH-H) MAX	0.0
RANGE OF DIVN DELAY - MIN	0.0
(VEH-H) MAX	0.0
AV BREAKDOWNS PER DAY	0.00
AV QUEUE DELAY/DAY (VEH-H)	0.0
AV DIVN DELAY/DAY (VEH-H)	0.0
AV TOTAL DELAY/DAY (VEH-H)	0.0

----- SITE ACCIDENT DELAYS -----	
ACCIDENT DURATION (MINS)	0
RANGE OF QUEUE DELAY - MIN	0.0
(VEH-H) MAX	0.0
RANGE OF DIVN DELAY - MIN	0.0
(VEH-H) MAX	0.0
AV ACCIDENTS PER DAY	0.00
AV QUEUE DELAY/DAY (VEH-H)	0.0
AV DIVN DELAY/DAY (VEH-H)	0.0
AV TOTAL DELAY/DAY (VEH-H)	0.0

AVERAGE ACCIDENT NUMBERS (PIA/DAY)		
MAIN ROUTE WITHOUT WORKS		0.0148
MAIN ROUTE WITH WORKS		0.0142
DIVERSION		0.0056

PIA: Personal Injury Accidents

IMPACTS ON ROAD USERS	
ROAD USER COSTS PER DAY (DOLLARS)	\$868
CONGESTED HOURS PER DAY*	0

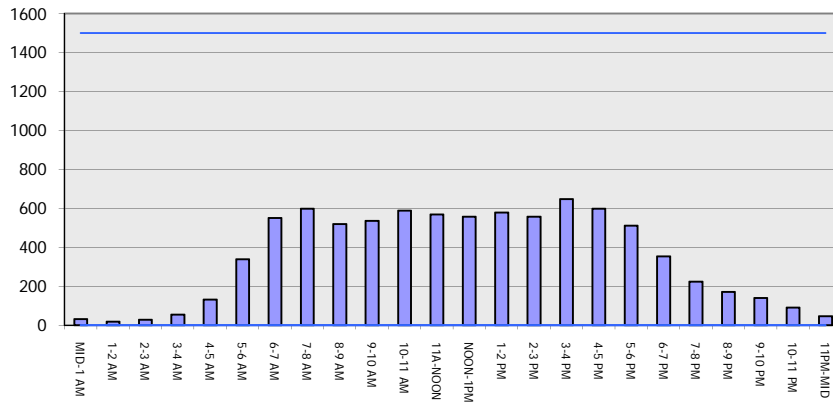
*Delays Exceeding 15 Minutes

**USH 51: STH 17/64 TO CTH U (MARATHON AND LINCOLN COUNTIES)
 CONTINUOUS (24 HOUR) CLOSURE
 DIVERSION ROUTE: CTH WW - STH 17/64**

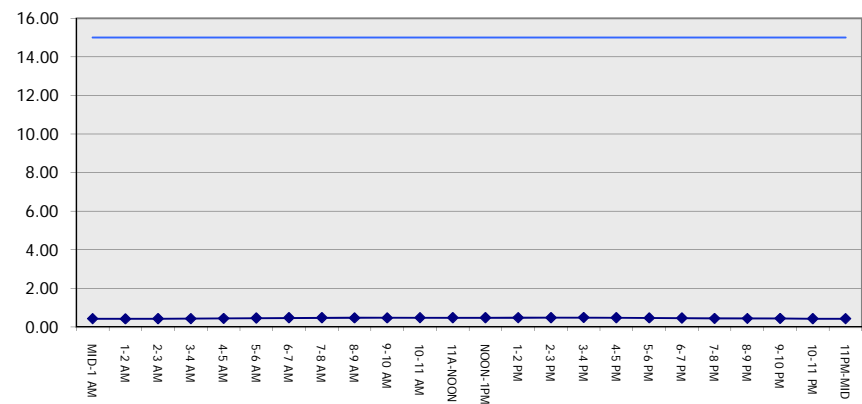
MAY
 Analyzed for 2009
 Construction Season

GRAPHICAL REPRESENTATION OF TRAFFIC MODEL INPUT AND OUTPUT
FRIDAY SOUTHBOUND DIRECTION

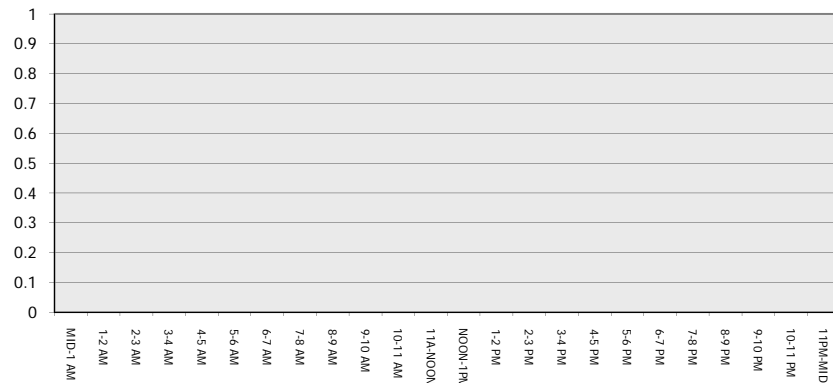
Main Route - Traffic Demand (Vehicles Per Hour)



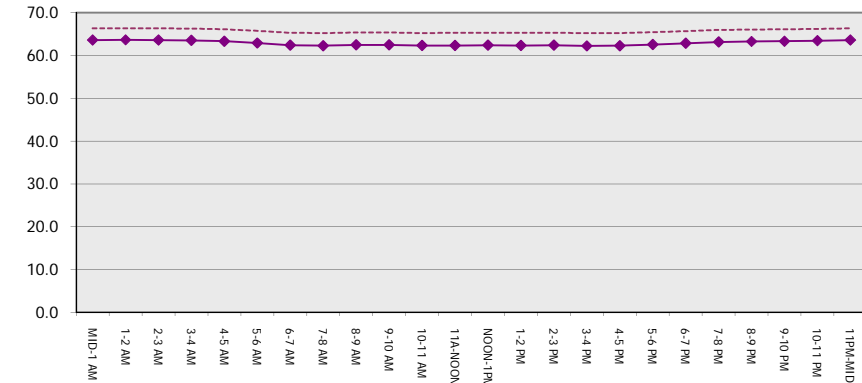
Main Route Average Delay Per Vehicle (Minutes)



Main Route - Average Queue Length (Vehicles)



Main Route - Average Speed (MPH)



USH 51: STH 17/64 TO CTH U (MARATHON AND LINCOLN COUNTIES) CONTINUOUS (24 HOUR) CLOSURE DIVERSION ROUTE: CTH WW - STH 17/64	MAY
	Analyzed for 2009 Construction Season

SUMMARY OF TRAFFIC MODEL OUTPUT

FRIDAY NORTHBOUND DIRECTION

TIME OF DAY	FLOWS AND CAPACITY IN VEH/HR								AVERAGE SPEEDS IN MPH						
	MAIN		DIVERSION		SITE CAPA CITY	FLOW MAIN ROUTE	FLOW DIVER -TING	TOTAL DIVN FLOW	AV.DEL PER VEH (MINS)	AVERAGE QUEUE (VEH)	MAIN ROUTE		SITE	ALTERNATE ROUTE	
	DEMAND FLOW	PCT HEAVY	NORMAL FLOW	PCT HEAVY							WITHOUT WORK ZN	WITH WORK ZN		WITHOUT WORK ZN	WITH WORK ZN
MID-1 AM	76	0.0	10	0.0	1500	76	0	10	0.43	0	66.3	63.5	45.2	44.0	44.0
1-2 AM	50	0.0	6	0.0	1500	50	0	6	0.43	0	66.3	63.6	45.3	44.0	44.0
2-3 AM	45	0.0	5	0.0	1500	45	0	5	0.43	0	66.3	63.6	45.3	44.0	44.0
3-4 AM	49	0.0	6	0.0	1500	49	0	6	0.43	0	66.3	63.6	45.3	44.0	44.0
4-5 AM	79	0.0	11	0.0	1500	79	0	11	0.43	0	66.3	63.5	45.1	43.9	43.9
5-6 AM	157	0.0	21	0.0	1500	157	0	21	0.44	0	66.1	63.3	44.8	43.8	43.8
6-7 AM	358	0.0	46	0.0	1500	358	0	46	0.46	0	65.7	62.8	44.0	43.4	43.4
7-8 AM	428	0.0	56	0.0	1500	428	0	56	0.46	0	65.6	62.7	43.8	43.3	43.3
8-9 AM	515	0.0	68	0.0	1500	515	0	68	0.47	0	65.5	62.5	43.5	43.1	43.1
9-10 AM	660	0.0	86	0.0	1500	660	0	86	0.49	0	65.1	62.2	42.9	42.8	42.8
10-11 AM	764	0.0	100	0.0	1500	764	0	100	0.50	0	65.0	61.9	42.5	42.6	42.6
11A-NOON	827	0.0	108	0.0	1500	827	0	108	0.50	0	64.8	61.8	42.3	42.5	42.5
NOON-1PM	923	0.0	121	0.0	1500	923	0	121	0.51	0	64.6	61.6	42.0	42.3	42.3
1-2 PM	1085	0.0	143	0.0	1500	1085	0	143	0.53	0	64.3	61.2	41.4	42.0	42.0
2-3 PM	1306	0.0	172	0.0	1499	1306	0	172	0.77	0	64.0	59.5	35.4	41.5	41.5
3-4 PM	1496	0.0	197	0.0	1499	1496	0	197	1.18	5	63.6	57.1	31.3	41.2	41.2
4-5 PM	1682	0.0	220	0.0	1500	1682	0	220	4.90	110	63.3	43.0	30.8	40.9	40.9
5-6 PM	1562	0.0	205	0.0	1499	1532	30	235	9.72	235	63.5	32.8	30.8	41.0	40.6
6-7 PM	1357	0.0	178	0.0	1499	1357	0	178	7.47	176	63.8	37.1	31.0	41.5	41.5
7-8 PM	1178	0.0	155	0.0	1500	1178	0	155	1.16	15	64.2	57.7	38.4	41.8	41.8
8-9 PM	977	0.0	129	0.0	1500	977	0	129	0.52	0	64.6	61.5	41.7	42.2	42.2
9-10 PM	703	0.0	92	0.0	1500	703	0	92	0.49	0	65.1	62.1	42.7	42.7	42.7
10-11 PM	428	0.0	56	0.0	1500	428	0	56	0.46	0	65.6	62.7	43.8	43.3	43.3
11PM-MID	257	0.0	33	0.0	1500	257	0	33	0.45	0	65.9	63.1	44.5	43.6	43.6

----- SITE BREAKDOWN DELAYS -----	
BREAKDOWN DURATION (MINS)	0
RANGE OF QUEUE DELAY - MIN	0.0
(VEH-H) MAX	0.0
RANGE OF DIVN DELAY - MIN	0.0
(VEH-H) MAX	0.0
AV BREAKDOWNS PER DAY	0.00
AV QUEUE DELAY/DAY (VEH-H)	0.0
AV DIVN DELAY/DAY (VEH-H)	0.0
AV TOTAL DELAY/DAY (VEH-H)	0.0

----- SITE ACCIDENT DELAYS -----	
ACCIDENT DURATION (MINS)	0
RANGE OF QUEUE DELAY - MIN	0.0
(VEH-H) MAX	0.0
RANGE OF DIVN DELAY - MIN	0.0
(VEH-H) MAX	0.0
AV ACCIDENTS PER DAY	0.00
AV QUEUE DELAY/DAY (VEH-H)	0.0
AV DIVN DELAY/DAY (VEH-H)	0.0
AV TOTAL DELAY/DAY (VEH-H)	0.0

AVERAGE ACCIDENT NUMBERS (PIA/DAY)	
MAIN ROUTE WITHOUT WORKS	0.0297
MAIN ROUTE WITH WORKS	0.0285
DIVERSION	0.0114

PIA: Personal Injury Accidents

IMPACTS ON ROAD USERS	
ROAD USER COSTS PER DAY (DOLLARS)	\$9,099
CONGESTED HOURS PER DAY*	0

*Delays Exceeding 15 Minutes

**USH 51: STH 17/64 TO CTH U (MARATHON AND LINCOLN COUNTIES)
 CONTINUOUS (24 HOUR) CLOSURE
 DIVERSION ROUTE: CTH WW - STH 17/64**

MAY
 Analyzed for 2009
 Construction Season

GRAPHICAL REPRESENTATION OF TRAFFIC MODEL INPUT AND OUTPUT
FRIDAY NORTHBOUND DIRECTION

