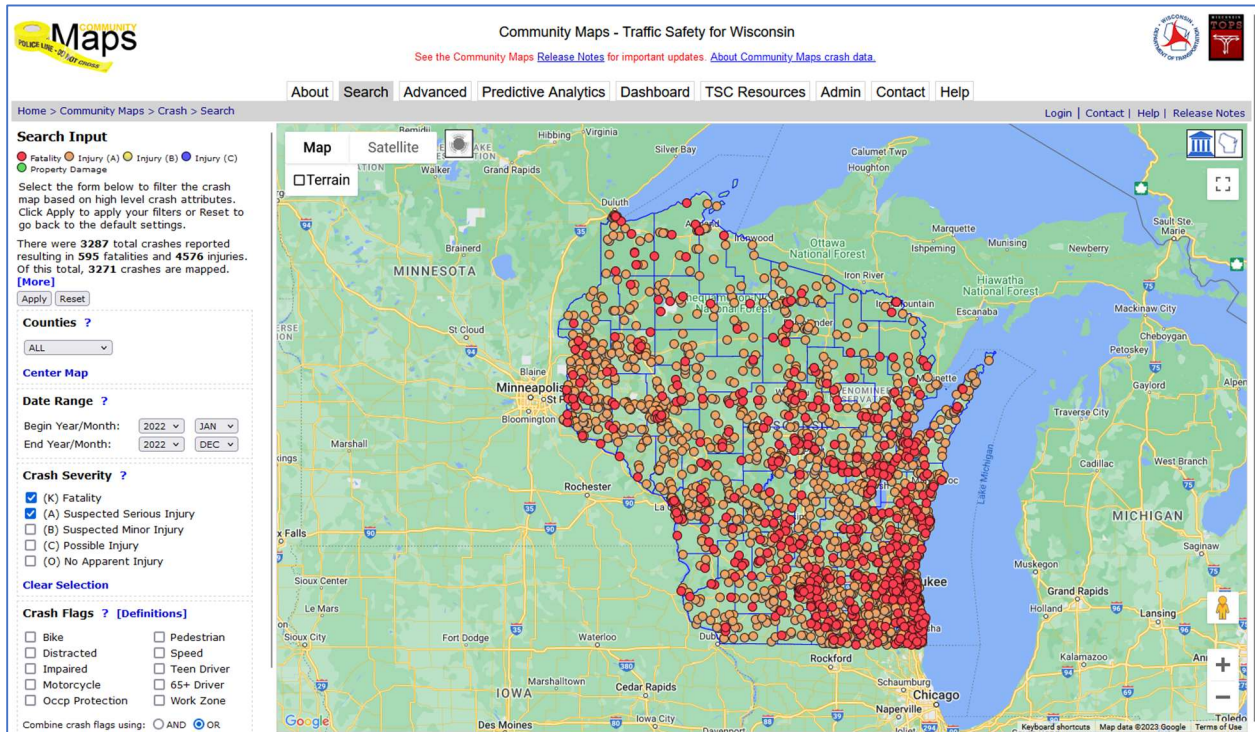


# Community Maps – Traffic Safety for Wisconsin

Community Maps provides Wisconsin’s law enforcement agencies and county Traffic Safety Commissions (TSCs) with a statewide map of all police reported motor vehicle crashes from 2010 to the current year. Fatal crashes are included from 2001. Crashes are updated on a nightly basis using geo-coded locations from the Wisconsin Department of Transportation (WisDOT) DT4000 police crash report. The Community Maps system was designed to support and enhance traffic safety planning, resource allocation, and decision support at the local level, in particular through the regular review of crashes at each of the county TSC quarterly meetings.



The Community Maps system includes a Basic Search interface that is available to anyone in the general public and an Advanced Search feature that requires login access. Additional resources include a TSC Resources information portal and a Predictive Analytics interface for crash hot spot detection.

Visit the link below for additional information and to access to the Community Maps system:

<https://CommunityMaps.Wi.Gov/>

For questions or assistance, see the Contact Information provided on the Community Maps website or email the Community Maps support team:

[community-maps@topslab.wisc.edu](mailto:community-maps@topslab.wisc.edu)

Community Maps is maintained at the UW-Madison by the Wisconsin Traffic Operations and Safety (TOPS) Laboratory in partnership with the WisDOT Bureau of Transportation Safety (BOTS). Requests for crash data analysis may also be directed to the BOTS Program and Policy Unit at [CrashDataAnalysis@dot.wi.gov](mailto:CrashDataAnalysis@dot.wi.gov).