

Crash Comparison Dashboard - User Guide

Revision: April 2023

About

This dashboard displays crash trends to see if crashes either went up or went down between baseline date and past year(s) of the same time period. The charts on the left side of the dashboard show the absolute number of crashes with base year (in **dark blue**) and past year(s) (in **light blue**) and the charts on the right show the relative (percent) difference.

The first row displays the total crashes and breaks it down by the five injury severity categories (the most severe injury in a single crash). The next three rows breaks down crashes by crash flag, i.e. if that flag was a factor in the crash. Crash flag definitions can be found under [Crash Flag Definitions](#) or under the *Help* tab in **Community Maps**.

While one can choose the county or municipality to examine, one can also choose one of five WisDOT regions. These are WisDOT Division of Transportation System Development (DTSD) Regions. To see which counties are in which region, visit [here](#).

Numbers are rounded for graphical purposes. Crash numbers and percent change may appear to not line up. This is due to rounding and is more likely an issue when comparing to 3- or 5-year averages. For example, base year and past 3 years may each show 0 crashes, but a 100% decrease. The 3 year average was rounded down from 0.333 to 0, giving this 100% decrease but still showing 0 crashes.

The *Search* tab in **Community Maps** **always** includes parking lot/private property (PL/PP). This dashboard has the option of excluding parking lot/private property crashes so numbers may not match.

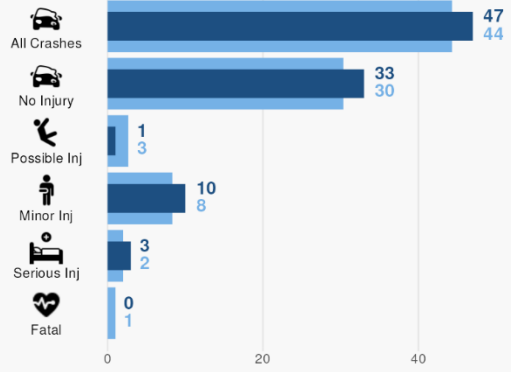
Example

This query selects crashes in Adams County. It looks at crashes from April to June 2022 (the **base year**) and compares it to the average number of crashes from April to June of each year between 2019-2021 (**past 3 years**). Deer crashes and parking lot/private property crashes are also excluded.

Now let's look at the results. This shows that there were 47 total crashes between April and June 2022 and an average of 44 crashes per year between April and June 2019-2021. The percent change shows how much these crashes went up or down. In this case, crashes went up from 2022 compared to the previous 3-year average of 44 by using the formula: $(47 - 44) / 44$.

County/Region	
Adams ▾	
Municipality	
- ▾	
Start Month	End Month
Apr ▾	Jun ▾
Past year(s)	Base year
3 years ▾	2022 ▾
<input checked="" type="checkbox"/> Exclude deer crashes	<input checked="" type="checkbox"/> Exclude park. lot/priv. prop.

Crashes by Injury Severity



Percent Change

